

SITUACIJA



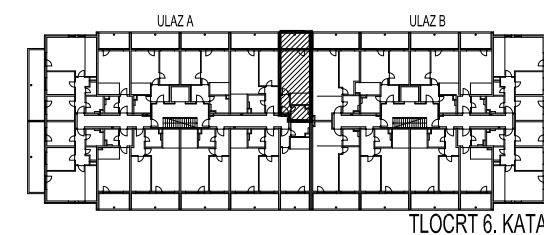
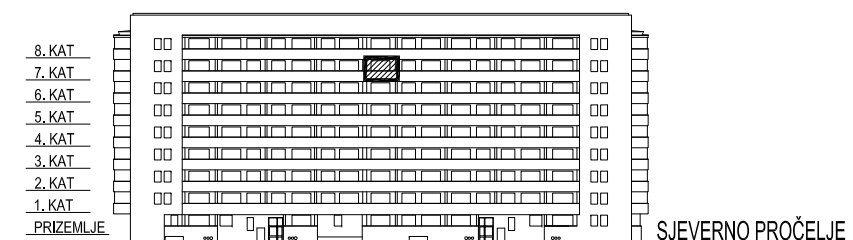
STAMBENA  
GRAĐEVINA

**E3**

Ivekovičeva – Lovinčičeva - Ulica Branka Perice  
na k.č.br. 4090/1

## ULAZ A - 7. KAT - E3-A-93

POLOŽAJ STANA



### E3-A-93, 1-sobni

		POVRŠINA	xKOEIF.	PRODAJNA POVRŠINA
1	ULAZ	2,88	1,00	2,88 m <sup>2</sup>
2	DN.BORAVAK+ BLAG.	21,80	1,00	21,80 m <sup>2</sup>
3	KUHINJA	3,68	1,00	3,68 m <sup>2</sup>
4	KUPAONICA	4,50	1,00	4,50 m <sup>2</sup>
5	LODJA	7,67	0,75	5,75 m <sup>2</sup>

**38,61 m<sup>2</sup>**



TLOCRT STANA - MJERILO 1:100