

SITUACIJA



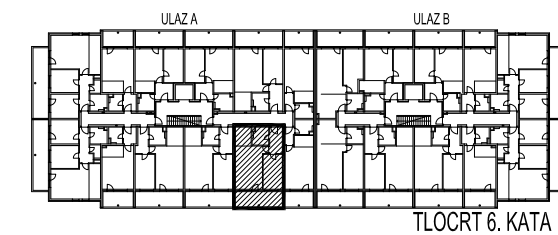
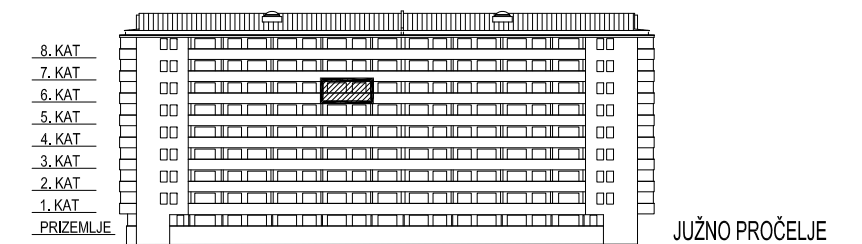
STAMBENA
GRAĐEVINA

E3

Ivekovičeva – Lovinčičeva - Ulica Branka Perice
na k.č.br. 4090/1

ULAZ A - 6. KAT - E3-A-79

POLOŽAJ STANA



E3-A-79, 2-sobni

| | | POVRŠINA | xKOEIF. | PRODAJNA POVRŠINA |
|---|-------------------|----------|---------|----------------------|
| 1 | ULAZ | 6,07 | 1,00 | 6,07 m ² |
| 2 | DN.BORAVAK+ BLAG. | 21,79 | 1,00 | 21,79 m ² |
| 3 | SOBA | 12,10 | 1,00 | 12,10 m ² |
| 4 | KUHINJA | 5,25 | 1,00 | 5,25 m ² |
| 5 | KUPAONICA | 4,92 | 1,00 | 4,92 m ² |
| 6 | LODJA | 12,79 | 0,75 | 9,59 m ² |

59,72 m²



TLOCRT STANA - MJERILO 1:100