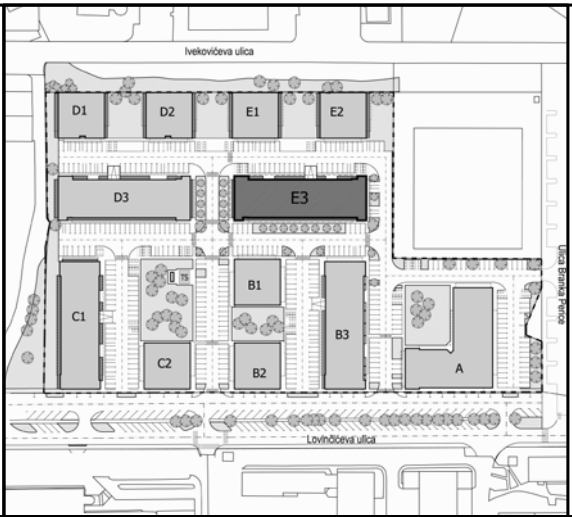


SITUACIJA



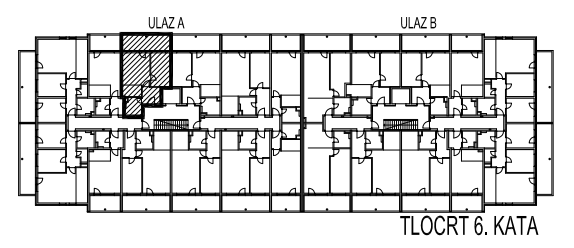
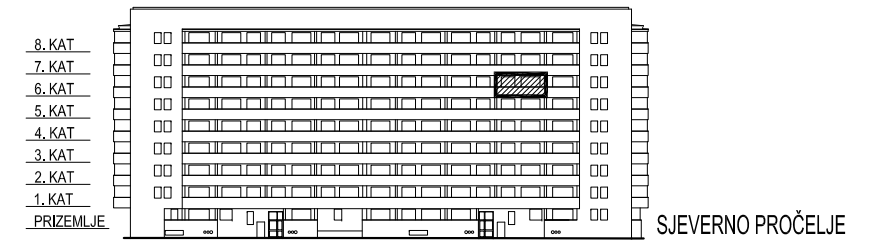
STAMBENA GRAĐEVINA

E3

Ivekovića – Lovinčičeva - Ulica Branka Perice
na k.č.br. 4090/1

ULAZ A - 6. KAT - E3-A-72

POLOŽAJ STANA



E3-A-72, 2-sobni

		POVRŠINA	xKOEUF.	PRODAJNA POVRŠINA
1	ULAZ	5,15	1,00	5,15 m ²
2	DN.BORAVAK+ BLAG.	15,87	1,00	15,87 m ²
3	SOBA	11,58	1,00	11,58 m ²
4	KUHINJA	3,66	1,00	3,66 m ²
5	KUPAONICA	4,79	1,00	4,79 m ²
6	LODJA	12,79	0,75	9,59 m ²

50,64 m²



TLOCRT STANA - MJERILO 1:100