

SITUACIJA



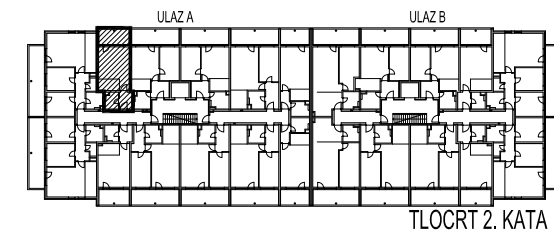
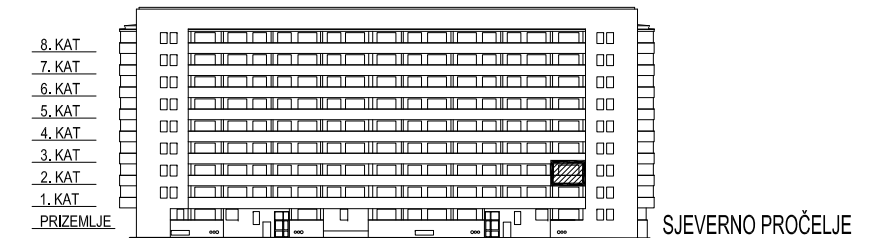
STAMBENA  
GRAĐEVINA

**E3**

Ivekovičeva – Lovinčičeva - Ulica Branka Perice  
na k.č.br. 4090/1

## ULAZ A - 2. KAT - E3-A-25

POLOŽAJ STANA



### E3-A-25, 1-sobni

		POVRŠINA	xKOEUF.	PRODAJNA POVRŠINA
1	ULAZ	3,80	1,00	3,80 m <sup>2</sup>
2	DN.BORAVAK+ BLAG.	19,87	1,00	19,87 m <sup>2</sup>
3	KUHINJA	4,20	1,00	4,20 m <sup>2</sup>
4	KUPAONICA	3,76	1,00	3,76 m <sup>2</sup>
5	LODJA	8,14	0,75	6,11 m <sup>2</sup>

**37,74 m<sup>2</sup>**



TLOCRT STANA - MJERILO 1:100