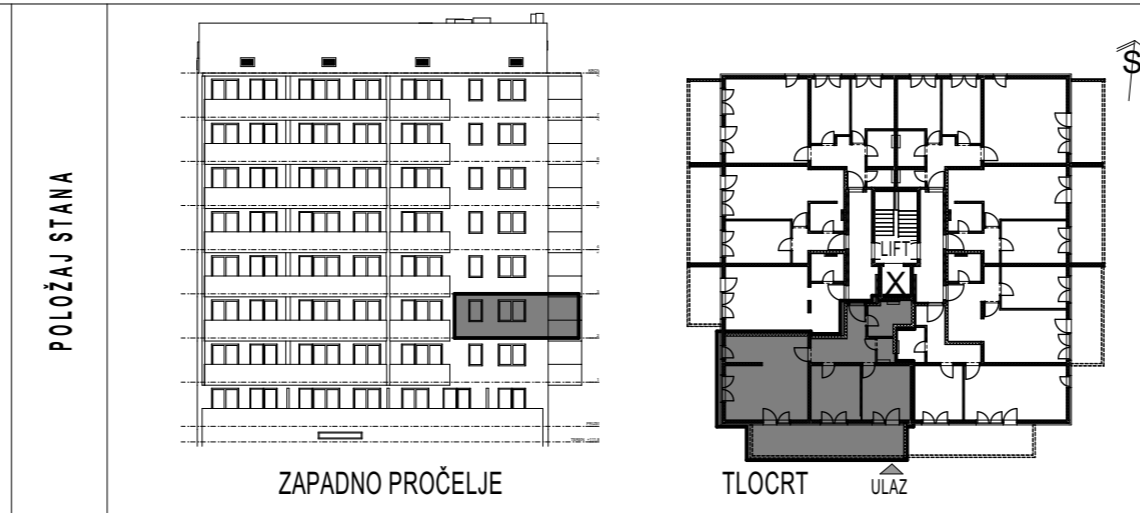


STAMBENA GRAĐEVINA

E 2

Ivekovićeve - Lovinčičeva - Ulica Branka Perice
na k.č.br. 4090/1

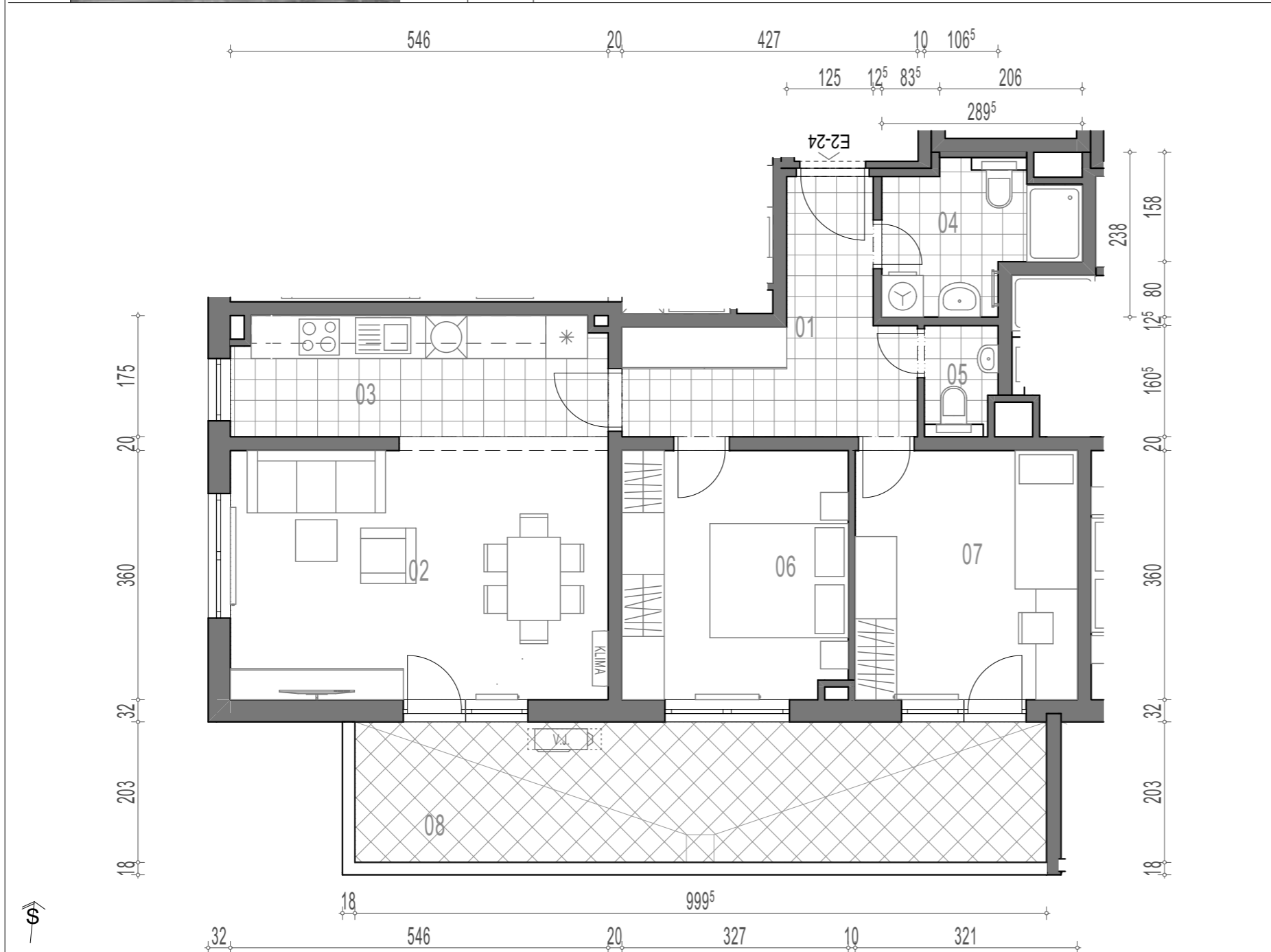
2.KAT - STAN- E2-24



E2-24, 3-sobni

		POVRŠINA	x KOEF.	PRODAJNA POVRŠINA
01	ULAZ	9,49	1,00	9,49
02	DN.BORAVAK + BLAG.	20,26	1,00	20,26
03	KUHINJA	9,35	1,00	9,35
04	KUPAONICA	5,24	1,00	5,24
05	WC	1,62	1,00	1,62
06	SOBA	11,65	1,00	11,65
07	DJ.SOBA	11,56	1,00	11,56
08	BALKON	20,29	0,50	10,14

79,31 m²



TLOCRT STANA - MJERILO 1:75