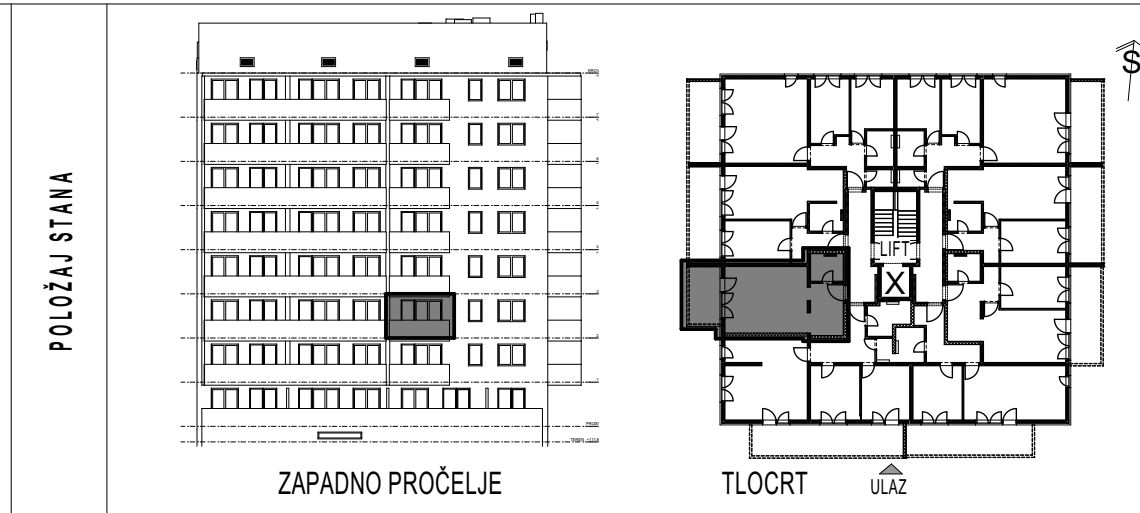
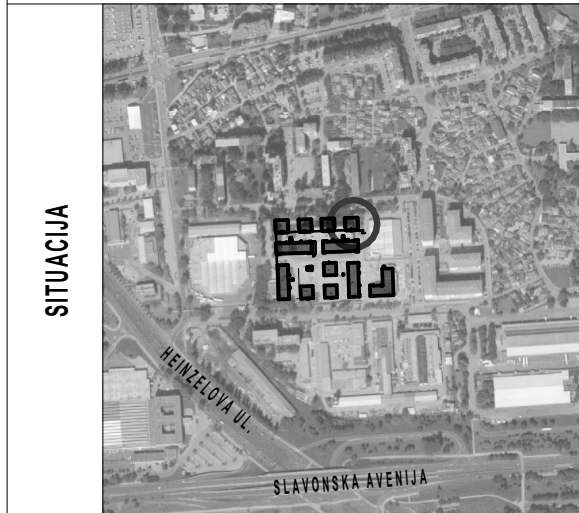


# STAMBENA GRAĐEVINA

# E 2

Ivekovićeva – Lovinčićeva - Ulica Branka Perice  
na k.č.br. 4090/1

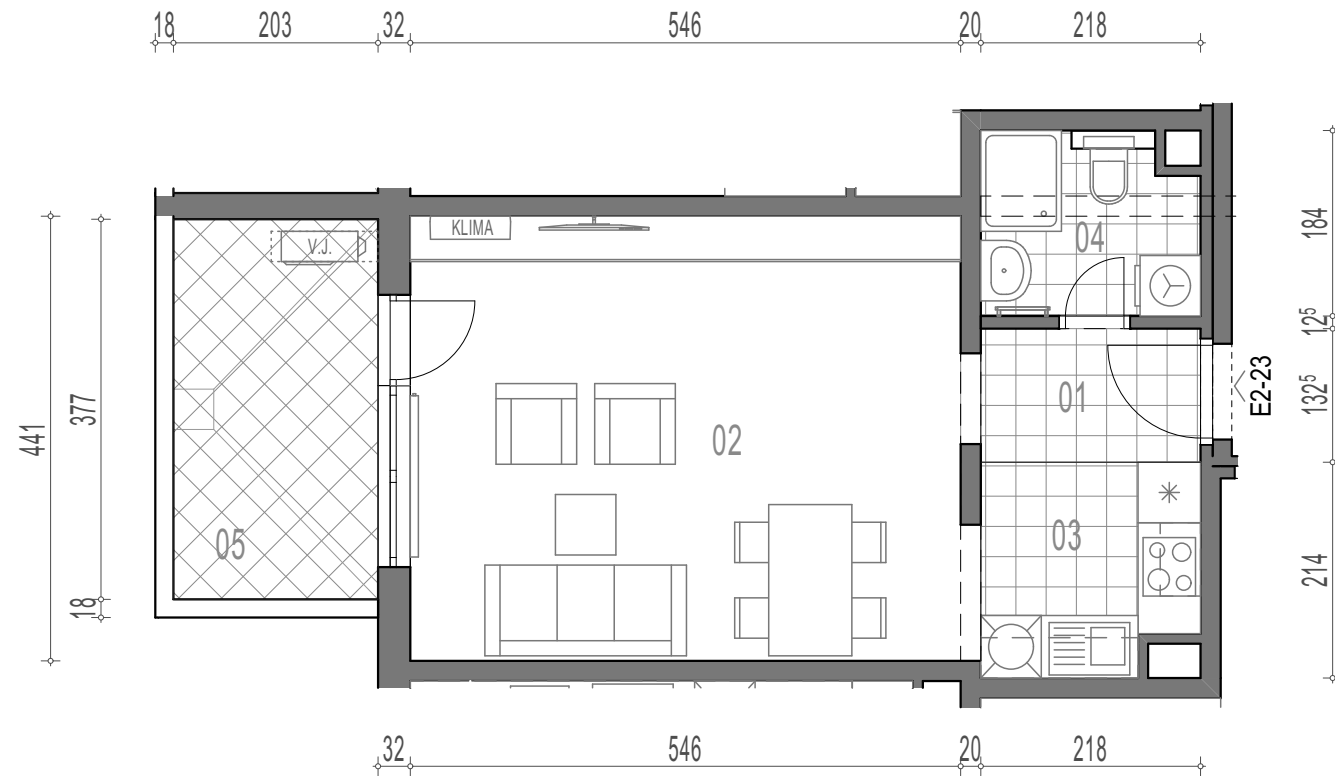
## 2.KAT - STAN- E2-23



### E2-23, 1-sobni

		POVRŠINA	x KOEF.	PRODAJNA POVRŠINA
01	ULAZ	2,89	1,00	2,89
02	DN.BORAVAK + BLAG.	24,35	1,00	24,35
03	KUHINJA	4,39	1,00	4,39
04	KUPAONICA	3,81	1,00	3,81
05	BALKON	7,65	0,50	3,83

**39,27 m<sup>2</sup>**



TLOCRT STANA - MJERILO 1:75