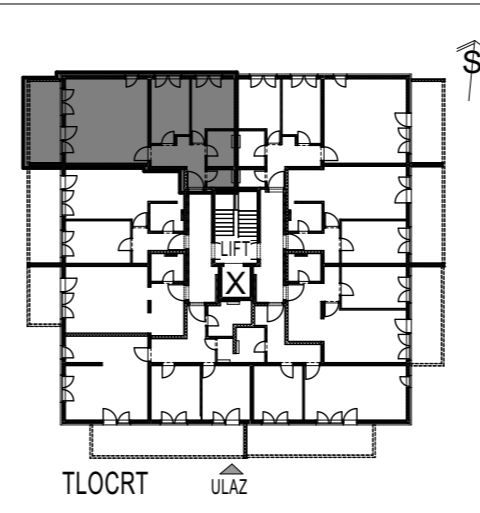
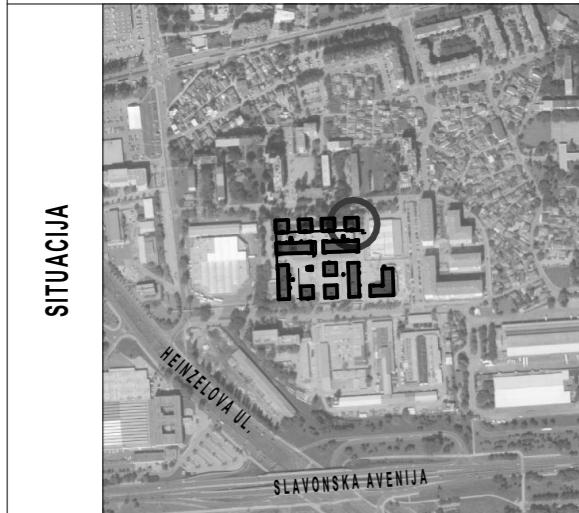


STAMBENA GRAĐEVINA

E 2

Ivekovičeva – Lovinčićeva - Ulica Branka Perice
na k.č.br. 4090/1

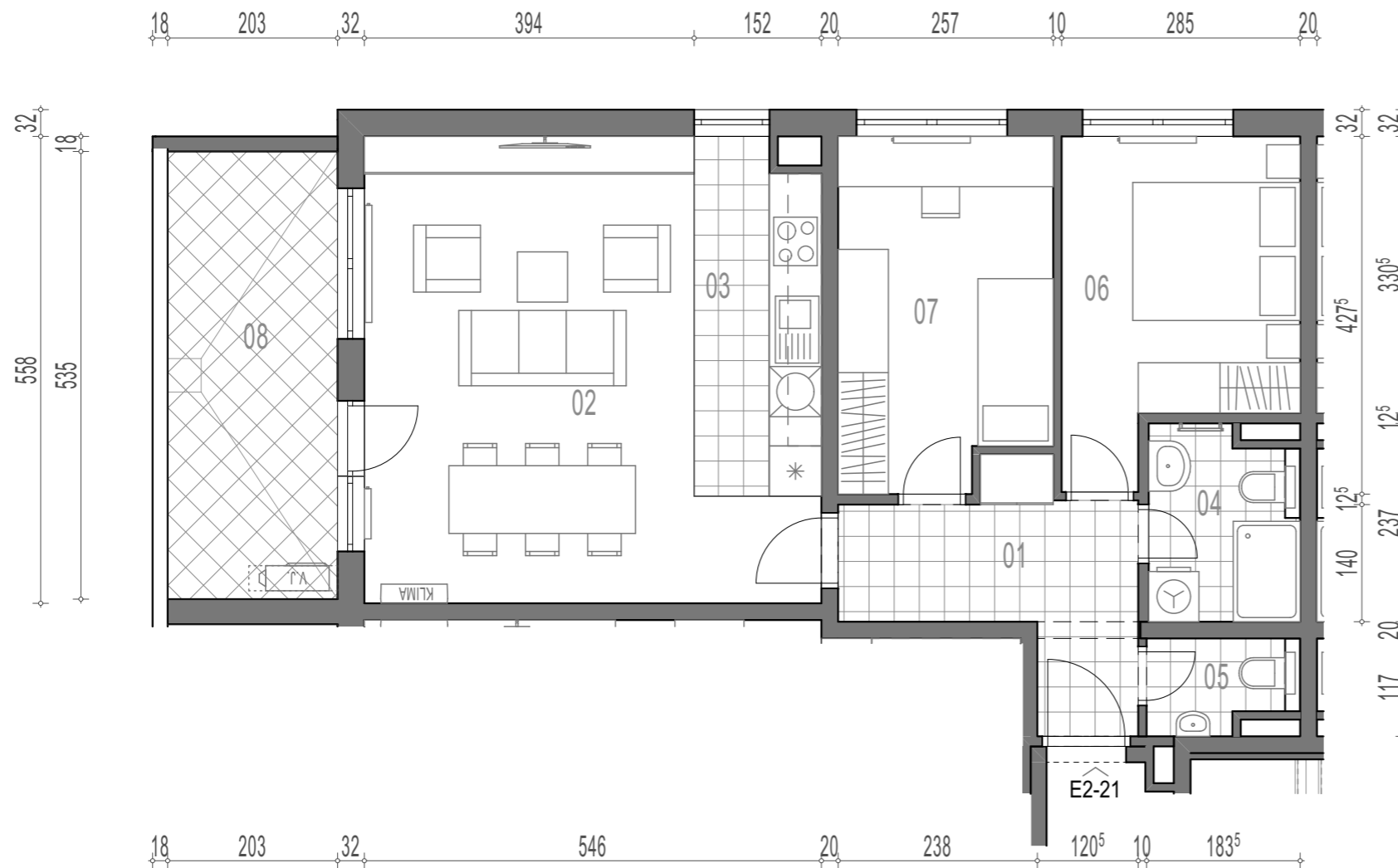
2.KAT - STAN- E2-21



E2-21, 3-sobni

		POVRŠINA	x KOEF.	PRODAJNA POVRŠINA
01	ULAZ	7,24	1,00	7,24
02	DN.BORAVAK + BLAG.	23,93	1,00	23,93
03	KUHINJA	6,26	1,00	6,26
04	KUPAONICA	4,05	1,00	4,05
05	WC	1,90	1,00	1,90
06	SOBA	10,28	1,00	10,28
07	DJ.SOBA	10,43	1,00	10,43
08	LODA	10,86	0,75	8,15

72,24 m²



TLOCRT STANA - MJERILO 1:75