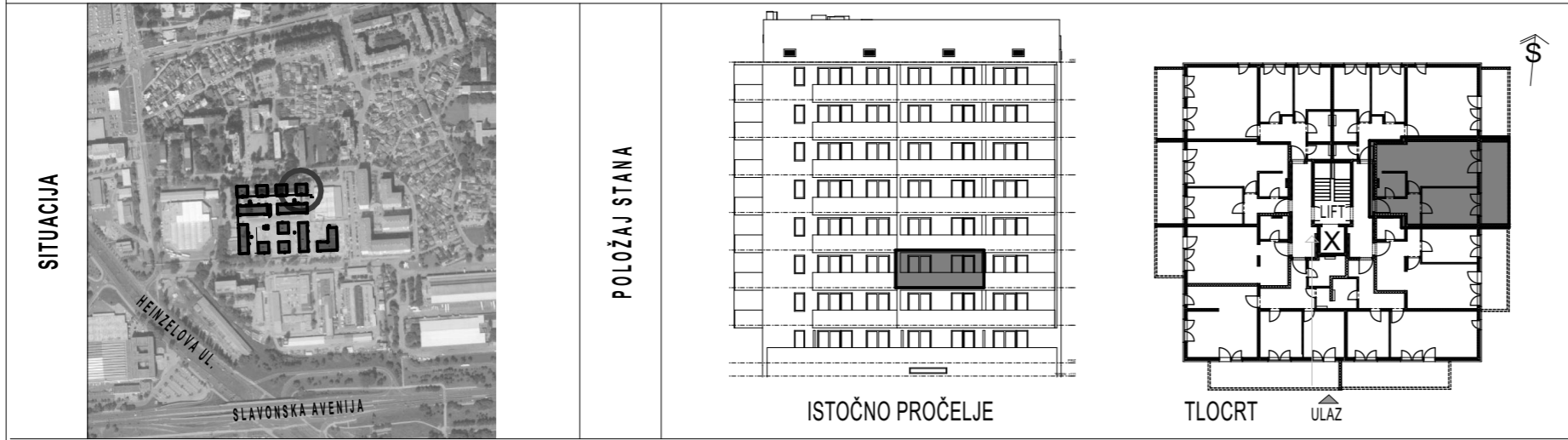


# STAMBENA GRAĐEVINA

# E 2

Ivekovićeve - Lovinčićeve - Ulica Branka Perice  
na k.č.br. 4090/1

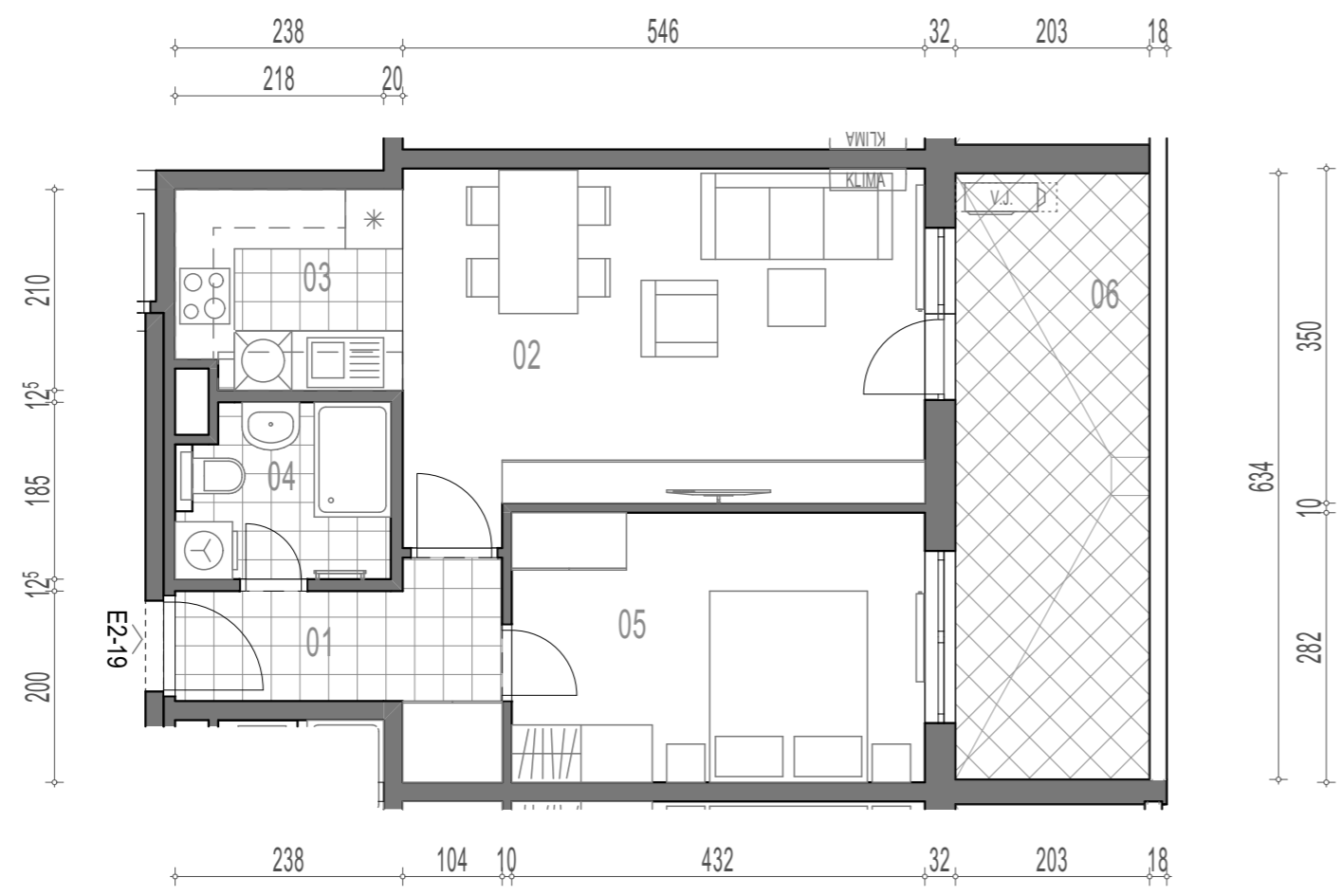
## 2.KAT - STAN- E2-19



### E2-19, 2-sobni

		POVRŠINA	x KOEF.	PRODAJNA POVRŠINA
01	ULAZ	5,18	1,00	5,18
02	DN.BORAVAK + BLAG.	19,60	1,00	19,60
03	KUHINJA	4,85	1,00	4,85
04	KUPAONICA	3,97	1,00	3,97
05	SOBA	12,18	1,00	12,18
06	LOĐA	12,87	0,75	9,65

**55,43 m<sup>2</sup>**



↑ §  
TLOCRT STANA - MJERILO 1:75