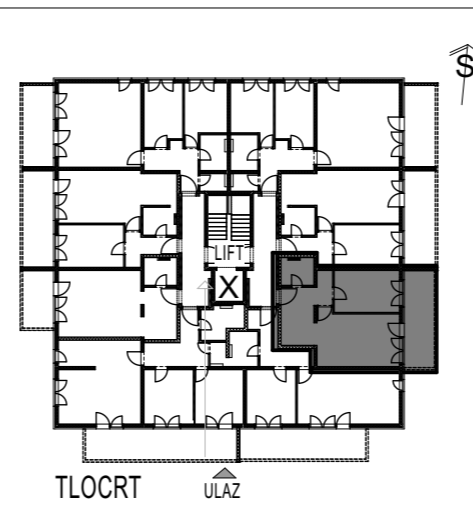
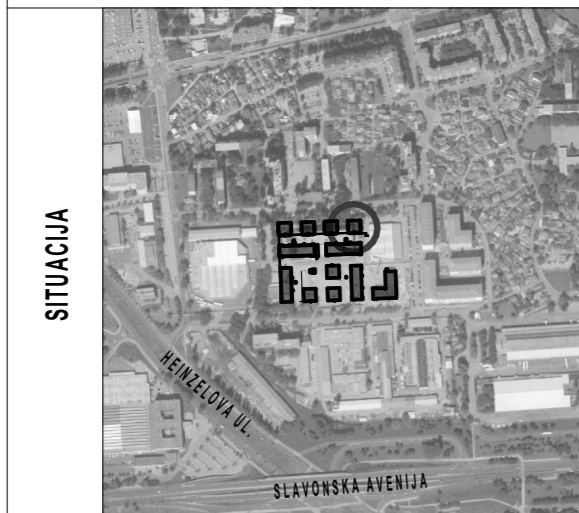


# STAMBENA GRAĐEVINA

# E 2

Ivekovićeva – Lovinčićeva - Ulica Branka Perice  
na k.č.br. 4090/1

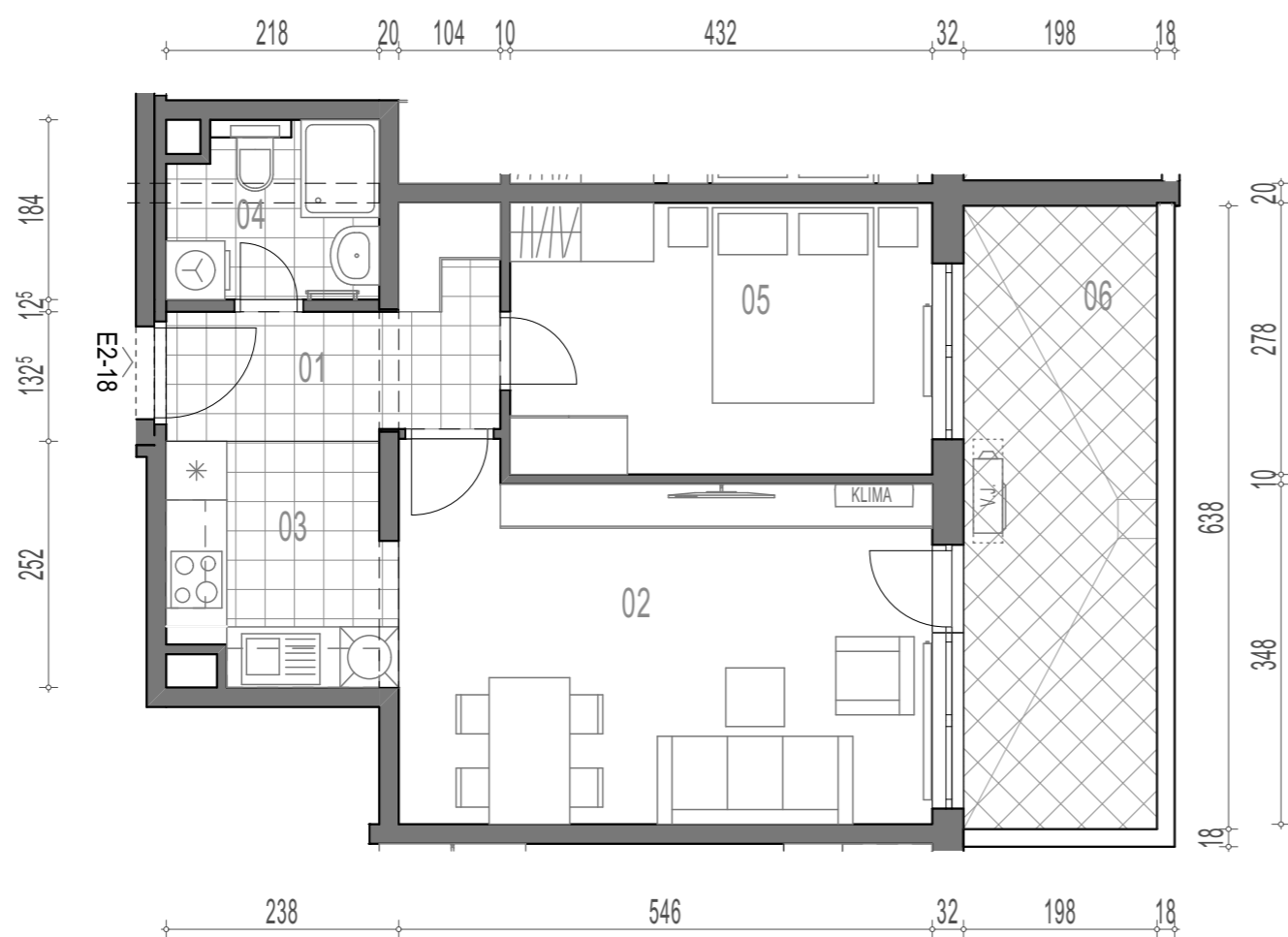
## 2.KAT - STAN- E2-18



### E2-18, 2-sobni

		POVRŠINA	x KOEF.	PRODAJNA POVRŠINA
01	ULAZ	5,54	1,00	5,54
02	DN.BORAVAK + BLAG.	19,48	1,00	19,48
03	KUHINJA	5,52	1,00	5,52
04	KUPAONICA	3,81	1,00	3,81
05	SOBA	12,01	1,00	12,01
06	BALKON	12,63	0,50	6,32

**52,68 m<sup>2</sup>**



TLOCRT STANA - MJERILO 1:75