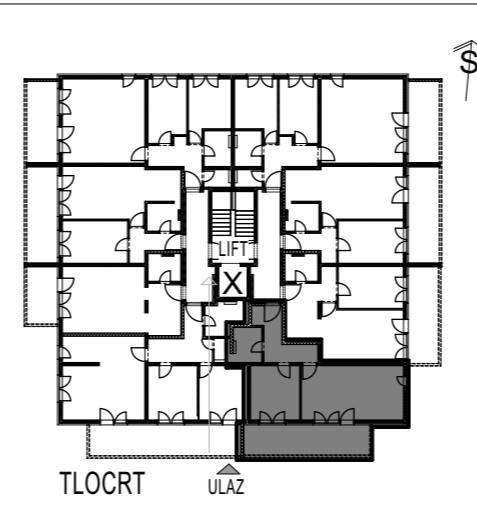
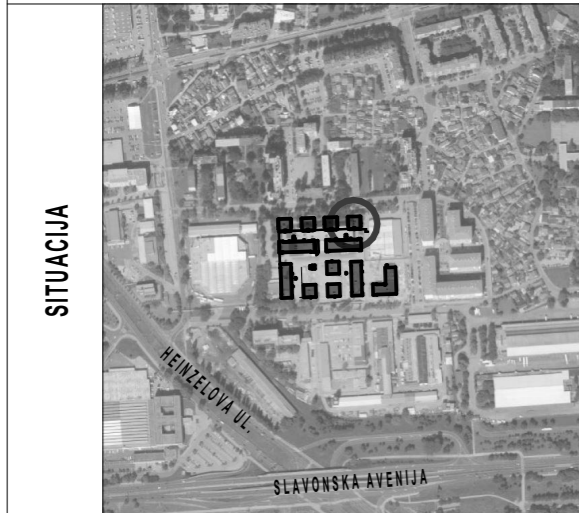


STAMBENA GRAĐEVINA

E 2

Ivekovićeva – Lovinčićeva - Ulica Branka Perice
na k.č.br. 4090/1

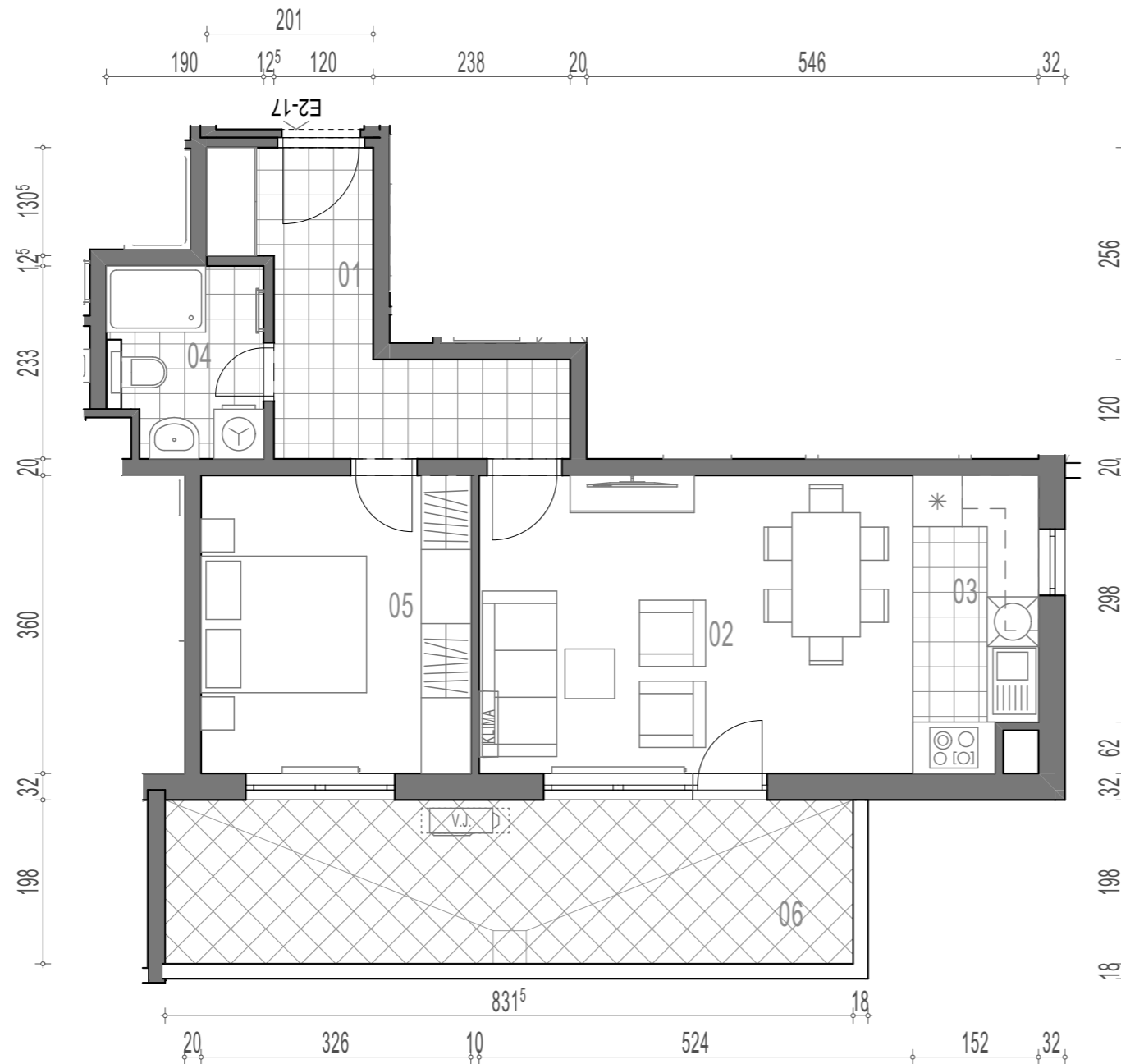
2.KAT - STAN- E2-17



E2-17, 2-sobni

POVRŠINA x KOEF.			PRODAJNA POVRŠINA
01	ULAZ	8,43 1,00	8,43
02	DN.BORAVAK + BLAG.	18,86 1,00	18,86
03	KUHINJA	5,15 1,00	5,15
04	KUPAONICA	4,19 1,00	4,19
05	SOBA	11,74 1,00	11,74
06	BALKON	16,46 0,50	8,23

56,60 m²



TLOCRT STANA - MJERILO 1:75