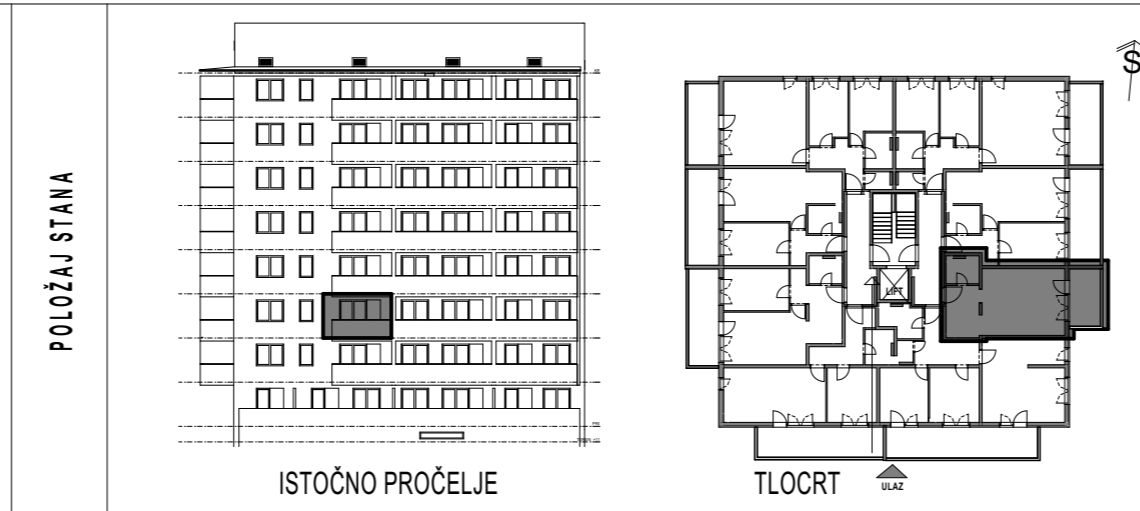


# STAMBENA GRAĐEVINA E 1

Ivekovićeva – Lovinčićeva - Ulica Branka Perice  
na k.č.br. 4090/1

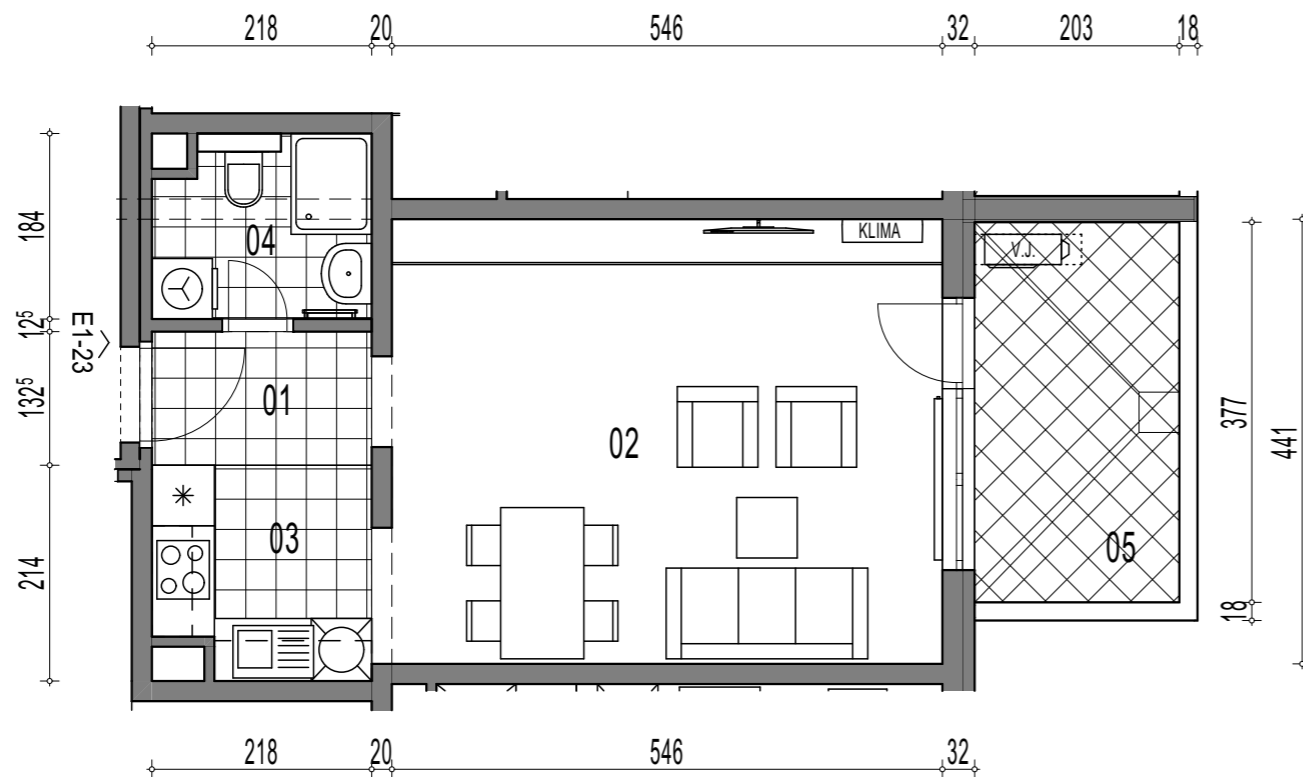
## 2.KAT - STAN- E1-23



### E1-23, 1-sobni

		POVRŠINA x KOEF.	PRODAJNA POVRŠINA
01	ULAZ	2,89 1,00	2,89
02	DN.BORAVAK + BLAG.	24,53 1,00	24,53
03	KUHINJA	4,39 1,00	4,39
04	KUPAONICA	3,81 1,00	3,81
05	BALKON	7,65 0,50	3,83

**39,45 m<sup>2</sup>**



TLOCRT STANA - MJERILO 1:75