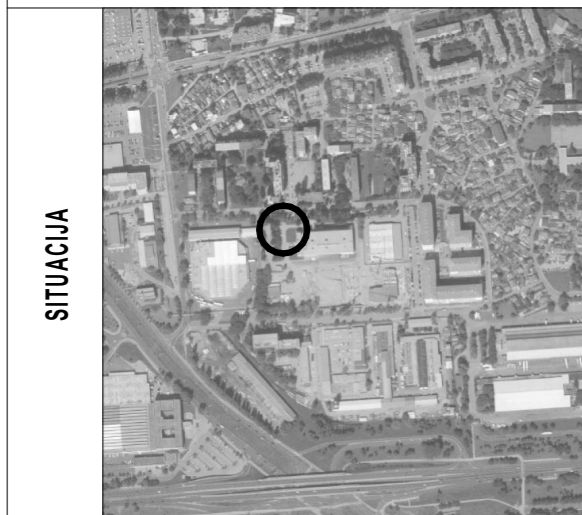


STAMBENA GRAĐEVINA

D 2

Ivekovićeva – Lovinčićeva - Ulica Branka Perice
na k.č.br. 4090/1

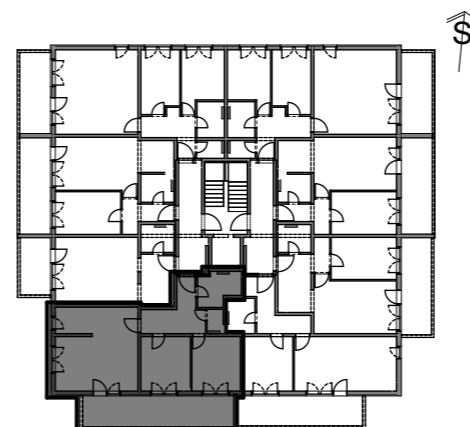
4.KAT - STAN- D2-40



POLOŽAJ STANA



ZAPADNO PROČELJE

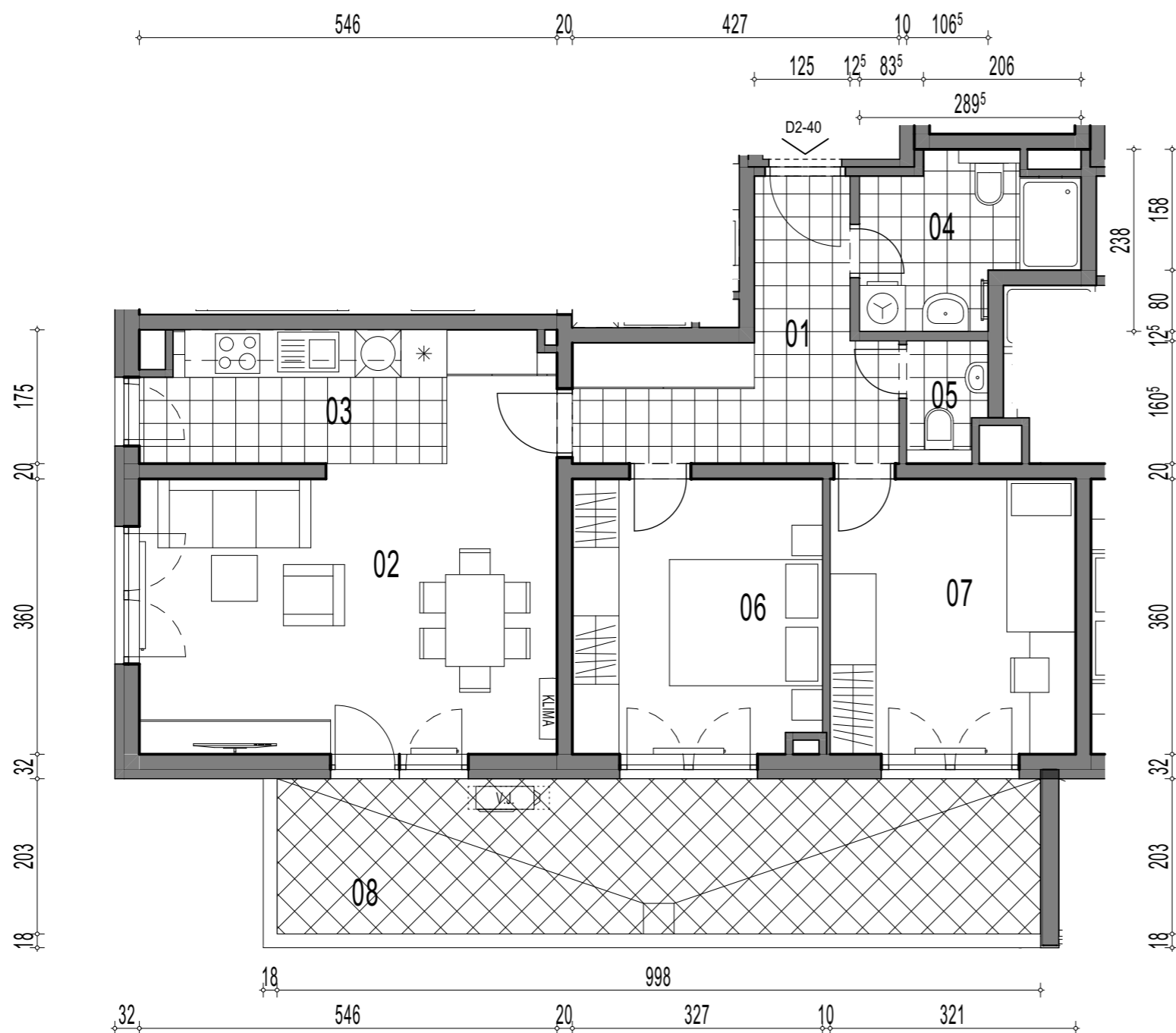


TLOCRT

D2-40, 3-sobni

		POVRŠINA	x KOEF.	PRODAJNA POVRŠINA
01	ULAZ	9,51	1,00	9,51
02	DN.BORAVAK + BLAG.	22,70	1,00	22,70
03	KUHINJA	6,76	1,00	6,76
04	KUPAONICA	5,35	1,00	5,35
05	WC	1,52	1,00	1,52
06	SOBA	11,62	1,00	11,62
07	DJ.SOBA	11,56	1,00	11,56
08	BALKON	20,26	0,50	10,13

79,15 m²



TLOCRT STANA - MJERILO 1:75