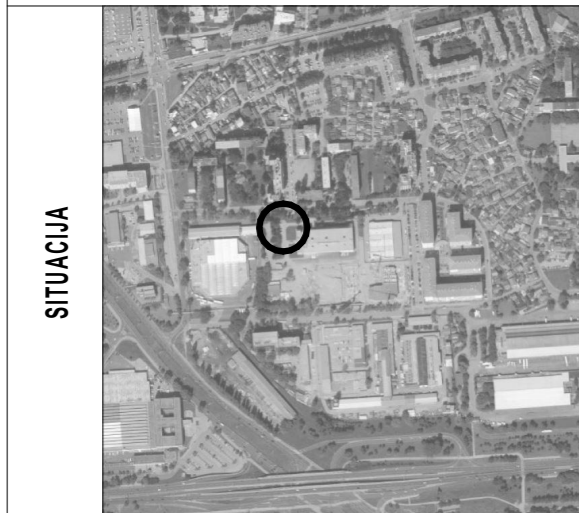


STAMBENA GRAĐEVINA

D 2

Ivekovičeva – Lovinčičeva - Ulica Branka Perice
na k.č.br. 4090/1

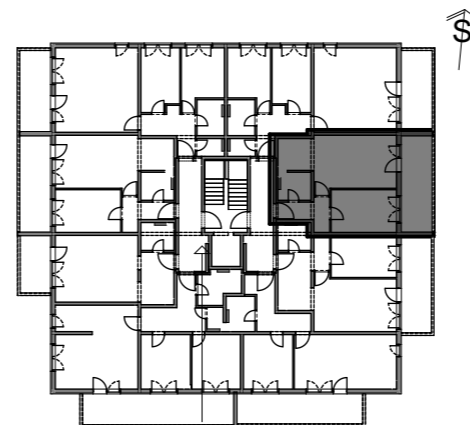
1.KAT - STAN- D2-11



POLOŽAJ STANA



ISTOČNO PROČELJE



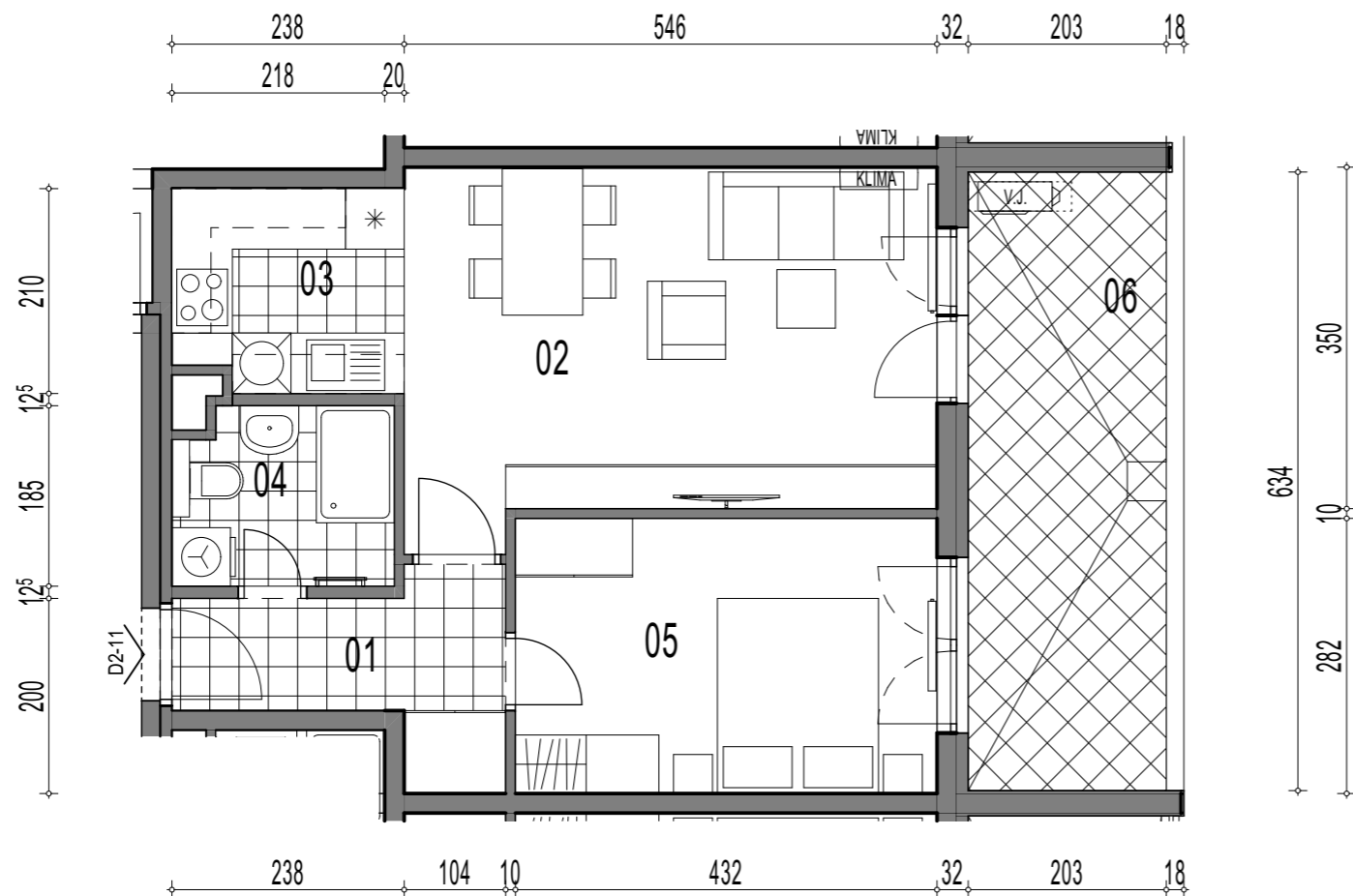
TLOCRT

POVRŠINA x KOEF. PRODAJNA
POVRŠINA

D2-11, 2-sobni

		POVRŠINA	x KOEF.	PRODAJNA POVRŠINA
01	ULAZ	5,18	1,00	5,18
02	DN.BORAVAK + BLAG.	19,60	1,00	19,60
03	KUHINJA	4,82	1,00	4,82
04	KUPAONICA	4,06	1,00	4,06
05	SOBA	12,18	1,00	12,18
06	LOĐA	12,87	0,75	9,65

55,49 m²



TLOCRT STANA - MJERILO 1:75