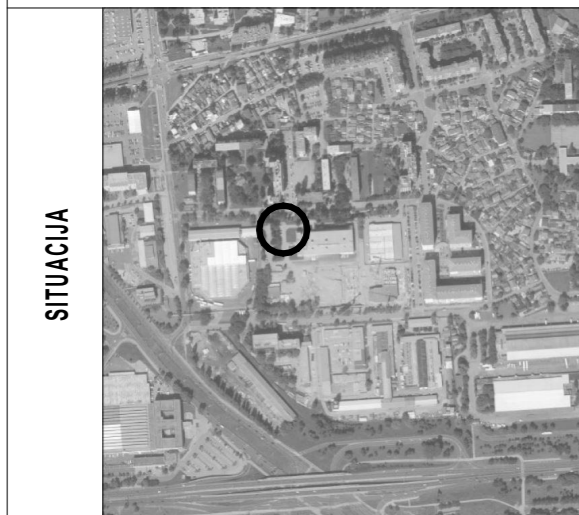


STAMBENA GRAĐEVINA

D 2

Ivekovićeva – Lovinčićeva - Ulica Branka Perice
na k.č.br. 4090/1

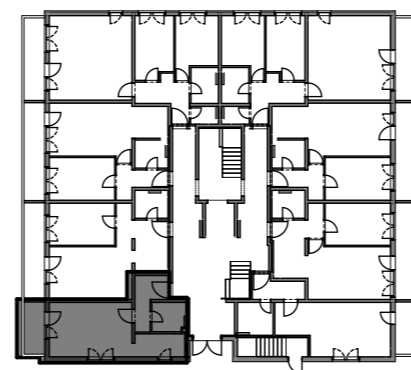
PRIZEMLJE - STAN- D2-08



POLOŽAJ STANA



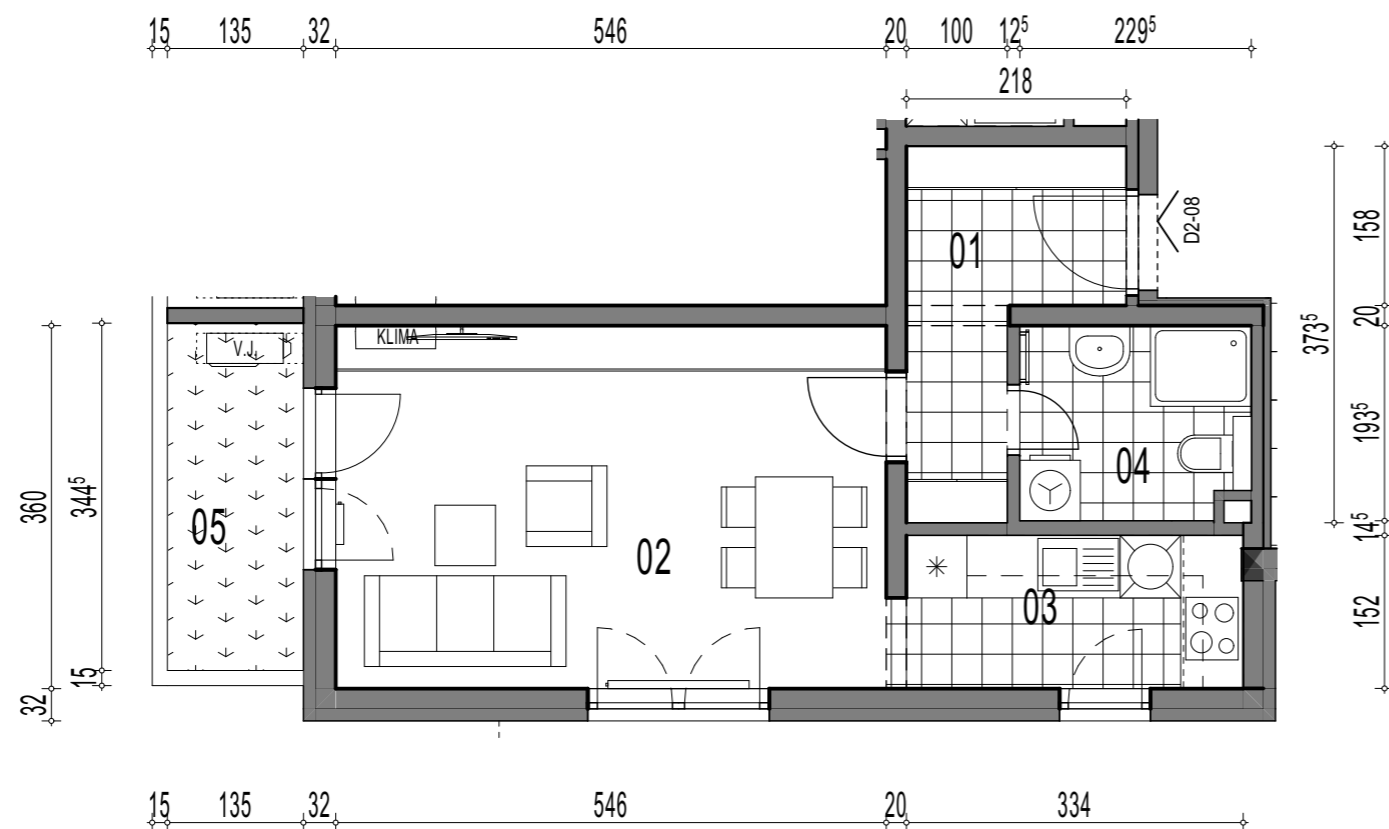
ZAPADNO PROČELJE



TLOCRT

D2-08, 1-sobni

		POVRŠINA x KOEF.	PRODAJNA POVRŠINA
01	ULAZ	5,60 1,00	5,60
02	DN.BORAVAK + BLAG.	19,66 1,00	19,66
03	KUHINJA	5,26 1,00	5,26
04	KUPAONICA	4,33 1,00	4,33
			34,85 m²
VRT	05 VRT	4,65 1,00	4,65
			4,65 m²



TLOCRT STANA - MJERILO 1:75