


STAMBENA GRAĐEVINA

D 2


Ivekovičeva – Lovinčićeva - Ulica Branka Perice
na k.č.br. 4090/1

PRIZEMLJE - STAN- D2-07

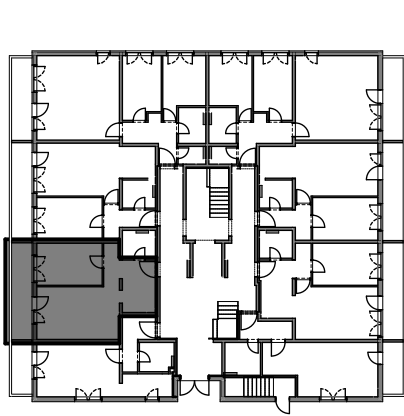
SITUACIJA



POLOŽAJ STANA

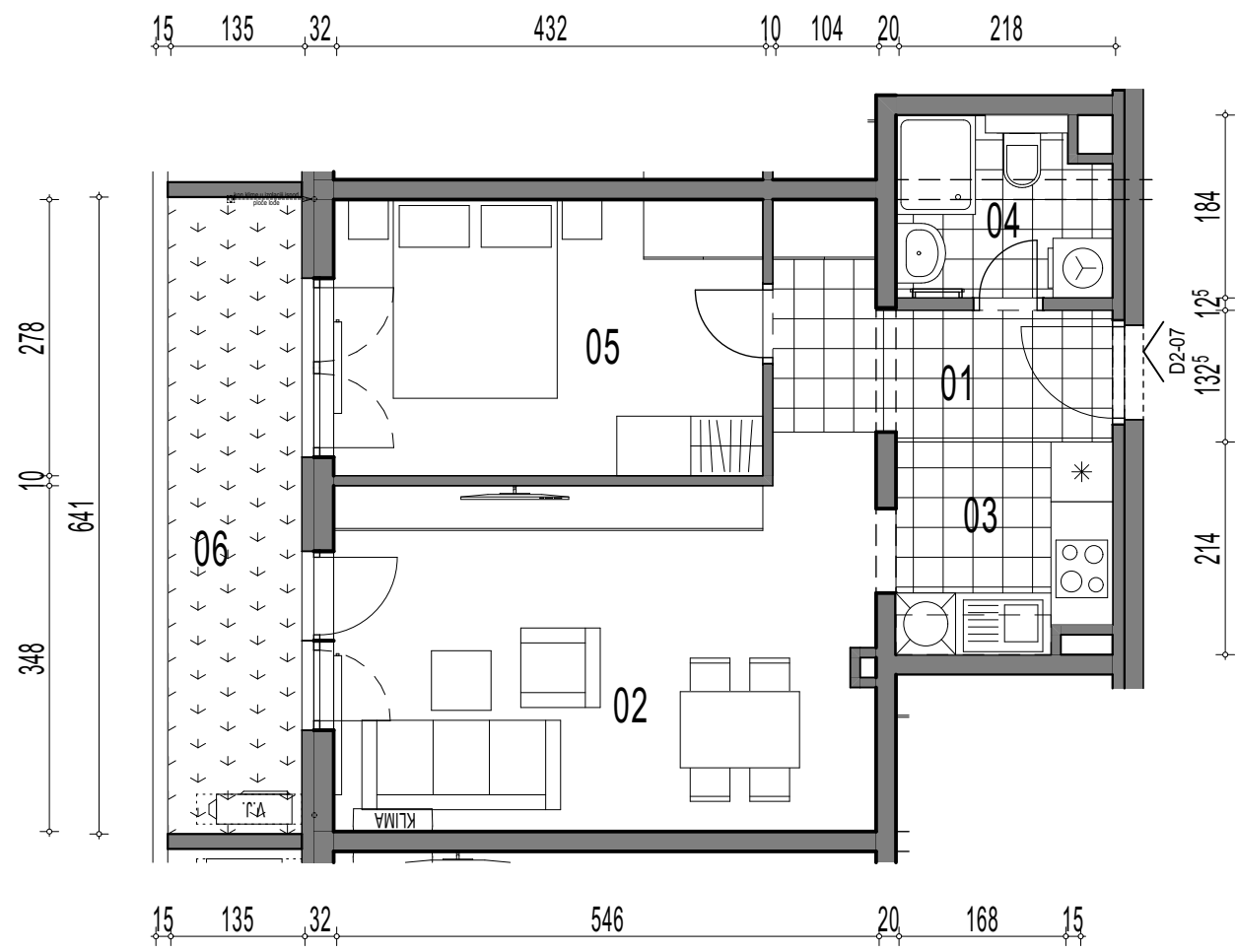


ZAPADNO PROČELJE



TLOCRT

			POVRŠINA x KOEF.	PRODAJNA POVRŠINA
D2-07, 2-sobni				
01	ULAZ		5,57 1,00	5,57
02	DN.BORAVAK + BLAG.		19,63 1,00	19,63
03	KUHINJA		4,48 1,00	4,48
04	KUPAONICA		3,77 1,00	3,77
05	SOBA		12,01 1,00	12,01
				45,46 m²
VRT	06	VRT	8,65 1,00	8,65
				8,65 m²



↑
TLOCRT STANA - MJERILO 1:75