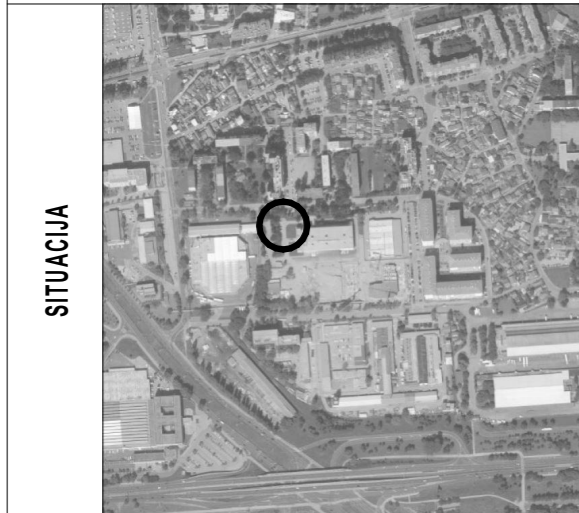


STAMBENA GRAĐEVINA

D 2

Ivekovičeva – Lovinčičeva - Ulica Branka Perice
na k.č.br. 4090/1

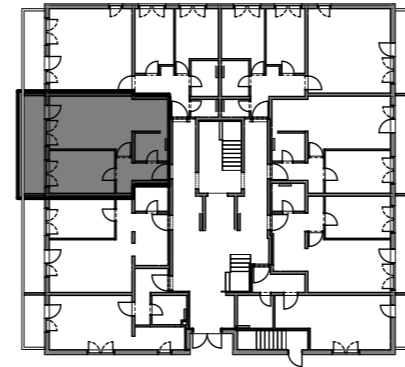
PRIZEMLJE - STAN- D2-06



POLOŽAJ STANA



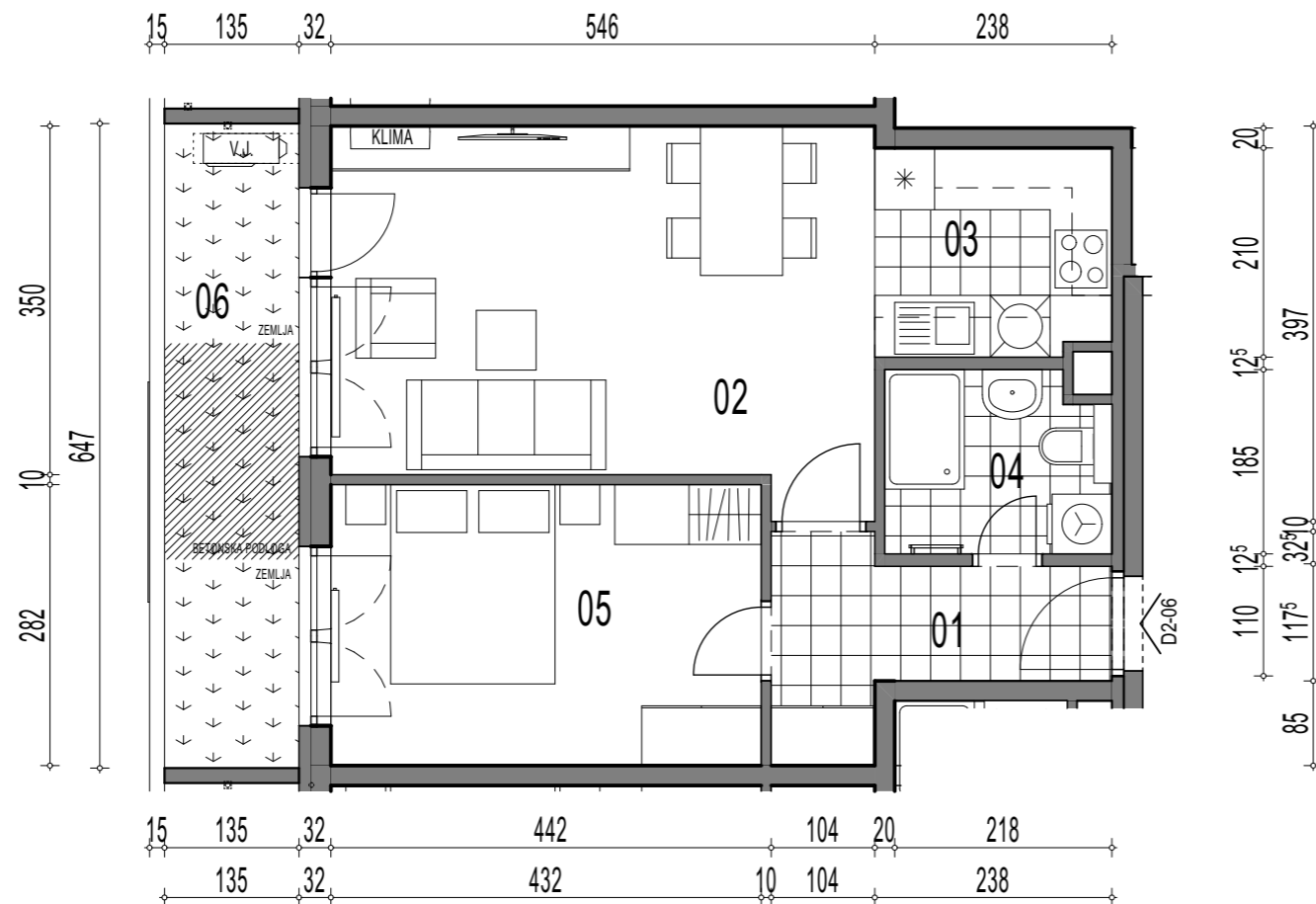
ZAPADNO PROČELJE



TLOCRT

D2-06, 2-sobni

			POVRŠINA x KOEF.	PRODAJNA POVRŠINA
01	ULAZ		5,18 1,00	5,18
02	DN.BORAVAK + BLAG.		19,60 1,00	19,60
03	KUHINJA		4,92 1,00	4,92
04	KUPAONICA		4,05 1,00	4,05
05	SOBA		12,18 1,00	12,18
				45,93 m²
VRT	06	VRT	8,73 1,00	8,73
				8,73 m²



TLOCRT STANA - MJERILO 1:75