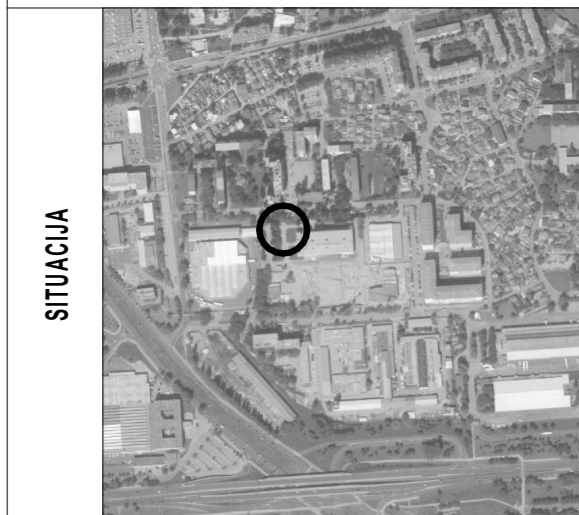


STAMBENA GRAĐEVINA

D 2

Ivekovičeva – Lovinčičeva - Ulica Branka Perice
na k.č.br. 4090/1

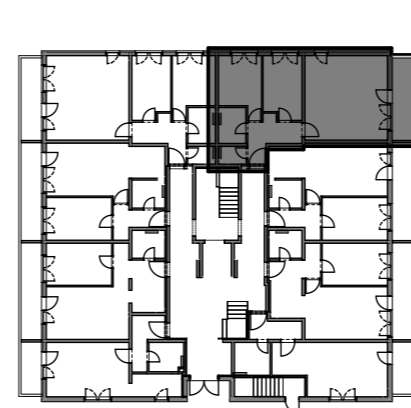
PRIZEMLJE - STAN- D2-04



POLOŽAJ STANA



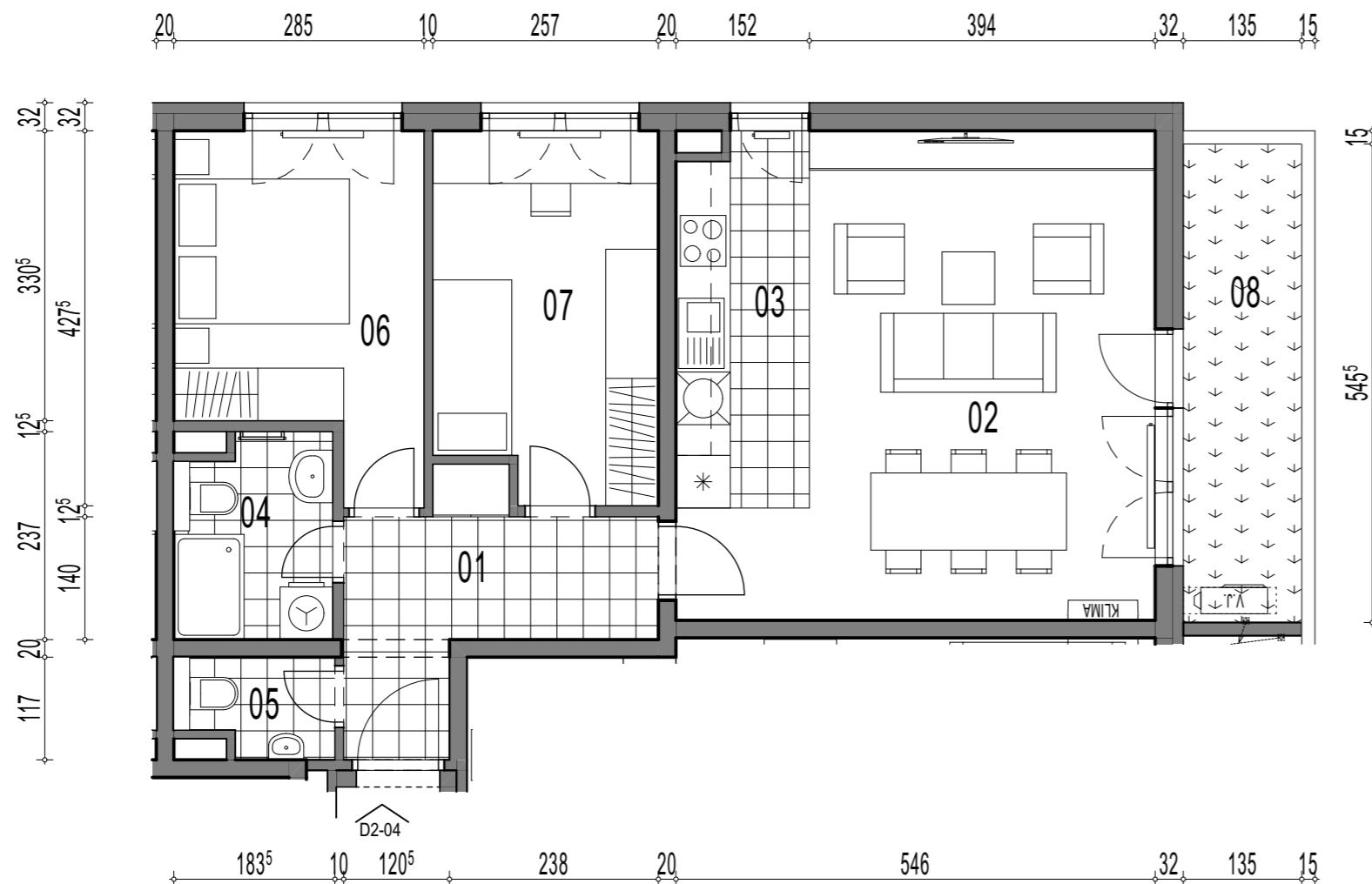
ISTOČNO PROČELJE



TLOCRT

D2-04, 3-sobni

		POVRŠINA x KOEF.	PRODAJNA POVRŠINA
01	ULAZ	7,19 1,00	7,19
02	DN.BORAVAK + BLAG.	23,93 1,00	23,93
03	KUHINJA	6,32 1,00	6,32
04	KUPAONICA	4,05 1,00	4,05
05	WC	1,91 1,00	1,91
06	SOBA	10,33 1,00	10,33
07	DJ.SOBA	10,47 1,00	10,47
			64,20 m²
VRT	08	VRT	7,36 1,00
			7,36 m²



TLOCRT STANA - MJERILO 1:75