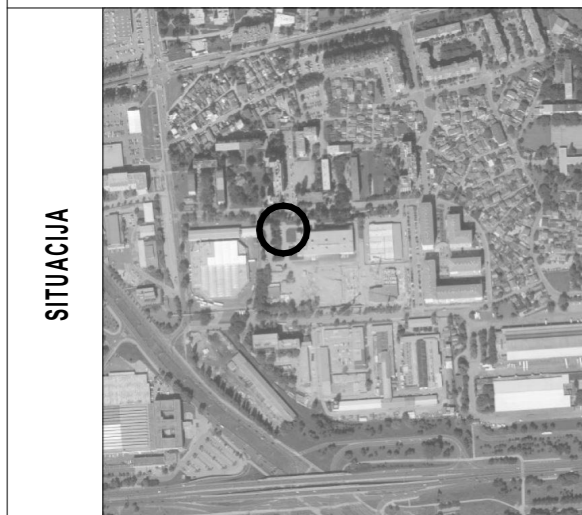


STAMBENA GRAĐEVINA

D 2

Ivekovićeva – Lovinčićeva - Ulica Branka Perice
na k.č.br. 4090/1

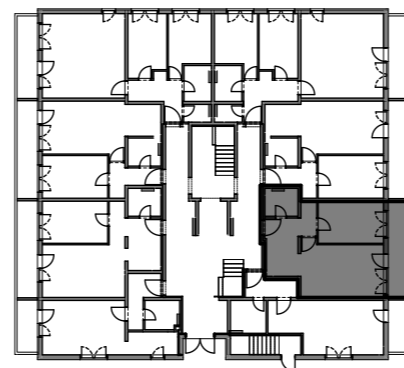
PRIZEMLJE - STAN- D2-02



POLOŽAJ STANA



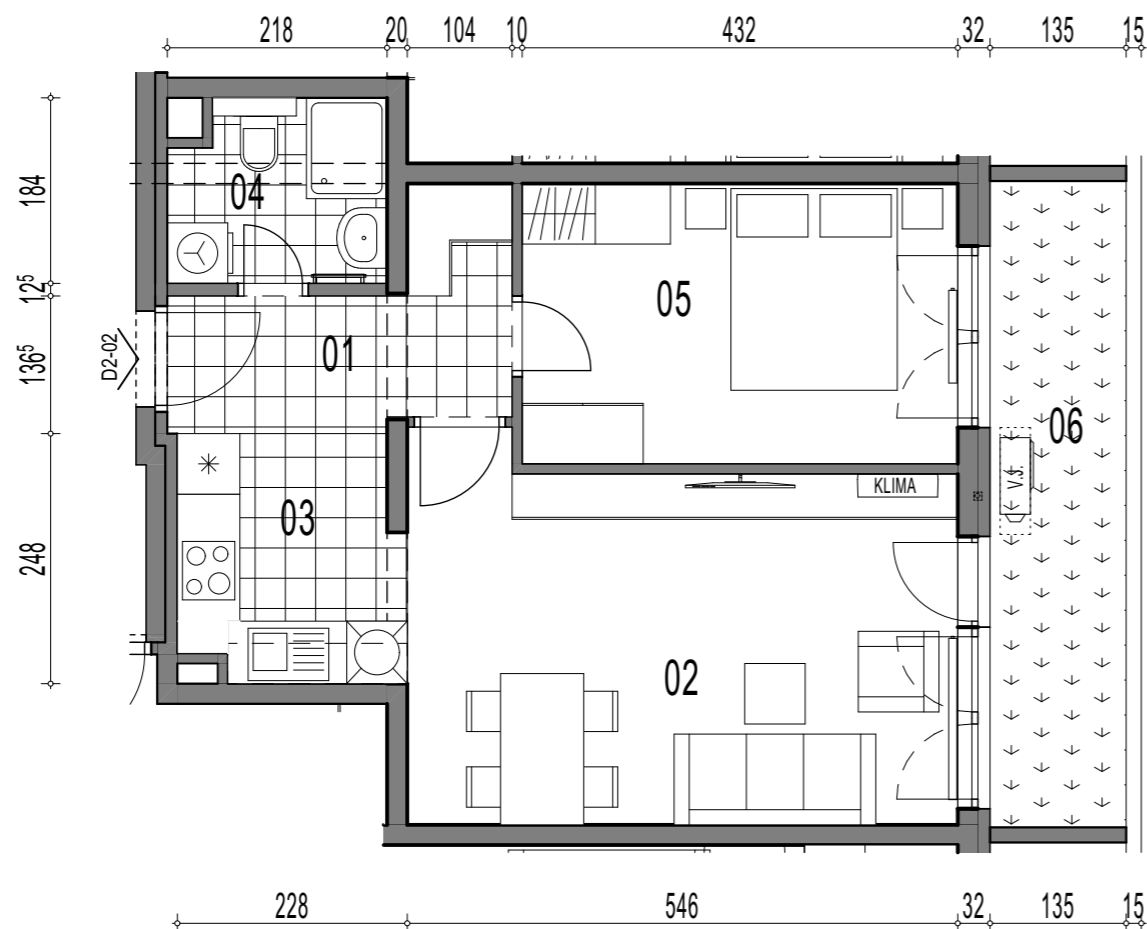
ISTOČNO PROČELJE



TLOCRT

D2-02, 2-sobni

		POVRŠINA	x KOEF.	PRODAJNA POVRŠINA	
01	ULAZ	5,62	1,00	5,62	
02	DN.BORAVAK + BLAG.	19,48	1,00	19,48	
03	KUHINJA	5,31	1,00	5,31	
04	KUPAONICA	3,79	1,00	3,79	
05	SOBA	12,01	1,00	12,01	
				46,21 m²	
VRT	06	VRT	8,65	1,00	8,65
				8,65 m²	



TLOCRT STANA - MJERILO 1:75