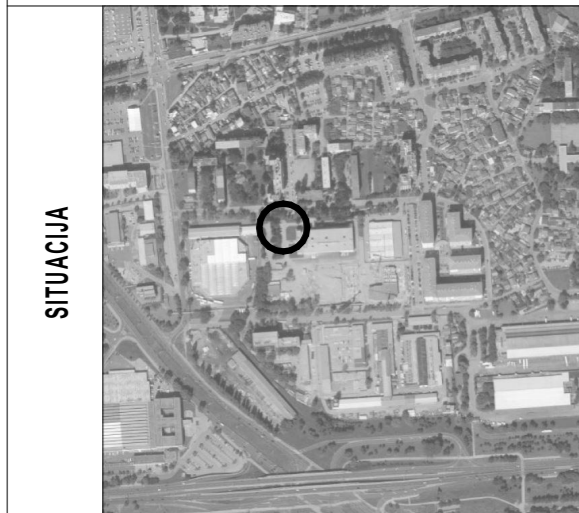


STAMBENA GRAĐEVINA **D 2**

Ivekovičeva – Lovinčičeva - Ulica Branka Perice
na k.č.br. 4090/1

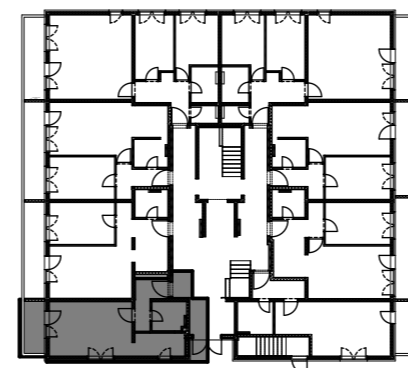
PRIZEMLJE - STAN- D2-01



POLOŽAJ STANA



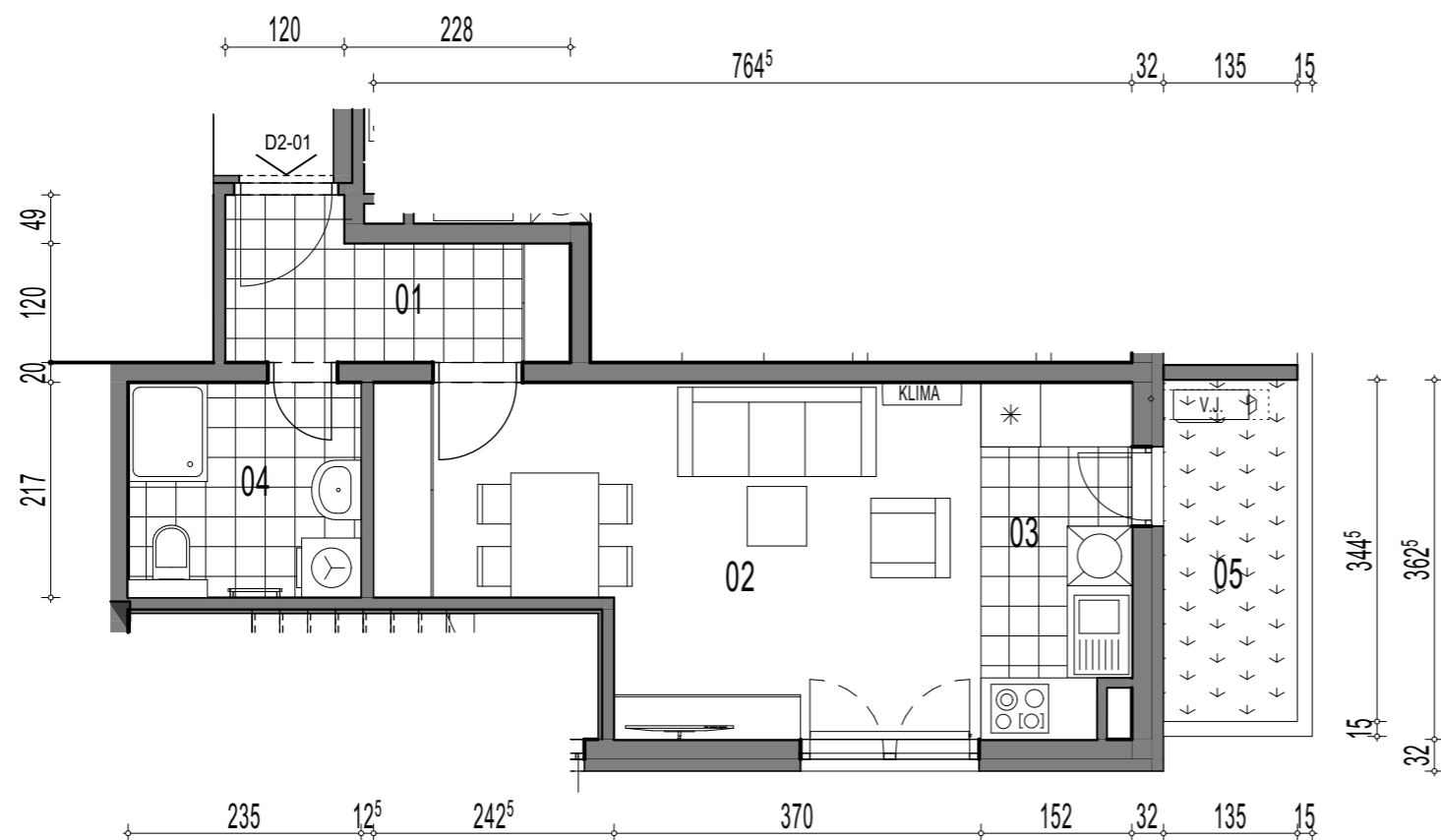
ZAPADNO PROČELJE



TLOCRT

D2-01, 1-sobni

		POVRŠINA	x KOEF.	PRODAJNA POVRŠINA	
01	ULAZ	4,80	1,00	4,80	
02	DN.BORAVAK + BLAG.	18,58	1,00	18,58	
03	KUHINJA	5,25	1,00	5,25	
04	KUPAONICA	4,96	1,00	4,96	
				33,59 m²	
VRT	05	VRT	4,65	1,00	4,65
				4,65 m²	



TLOCRT STANA - MJERILO 1:75