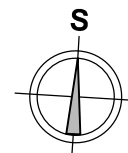
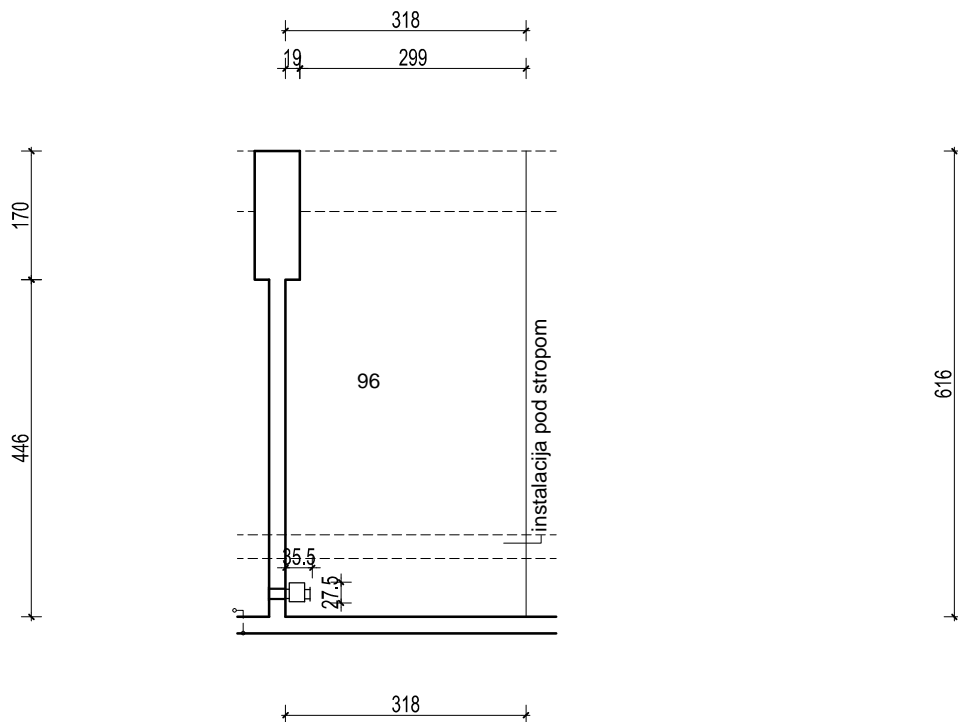


PODZEMNA GARAŽA CD i PODZEMNI DIJELOVI ZGRADE D3 - Lovinčićeva- Ivekovićeve- Ul. B.Perice, Zagreb

Visina parkirališta cca 280 cm

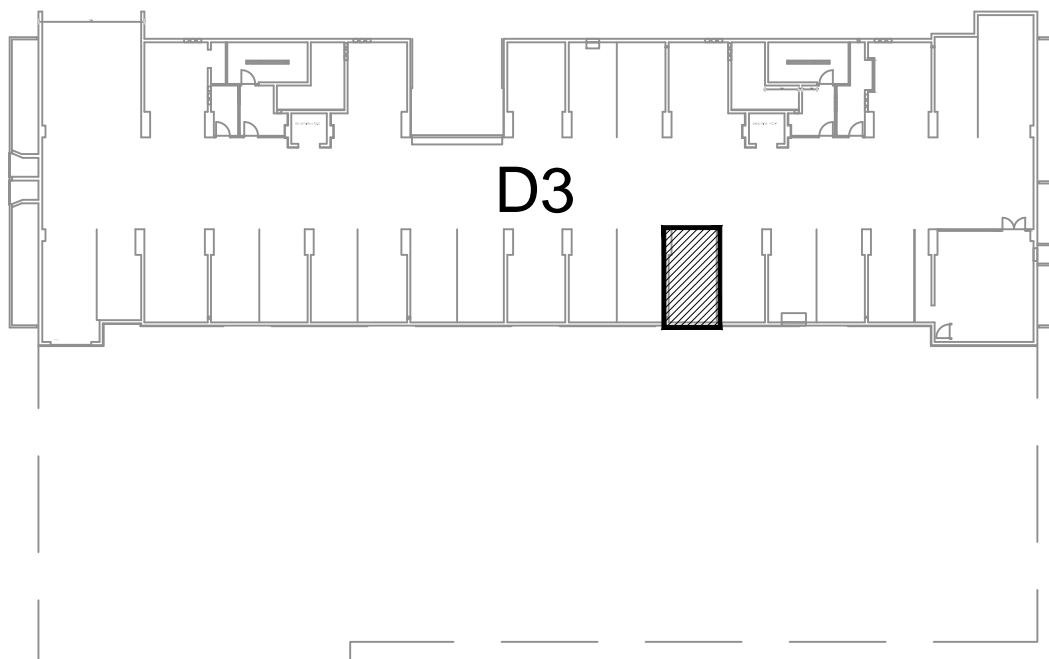


MJ 1:100

PODRUM -1, PARKIRALIŠTE D3- 96

P= 19,17 m²

NAPOMENA: PRISTUP ZAJEDNIČKIM INSTALACIJAMA POTREBNO JE OMOGUĆITI PO POTREBI



PODRUM -1

POLOŽAJ PARKIRALIŠTA U GARAŽI