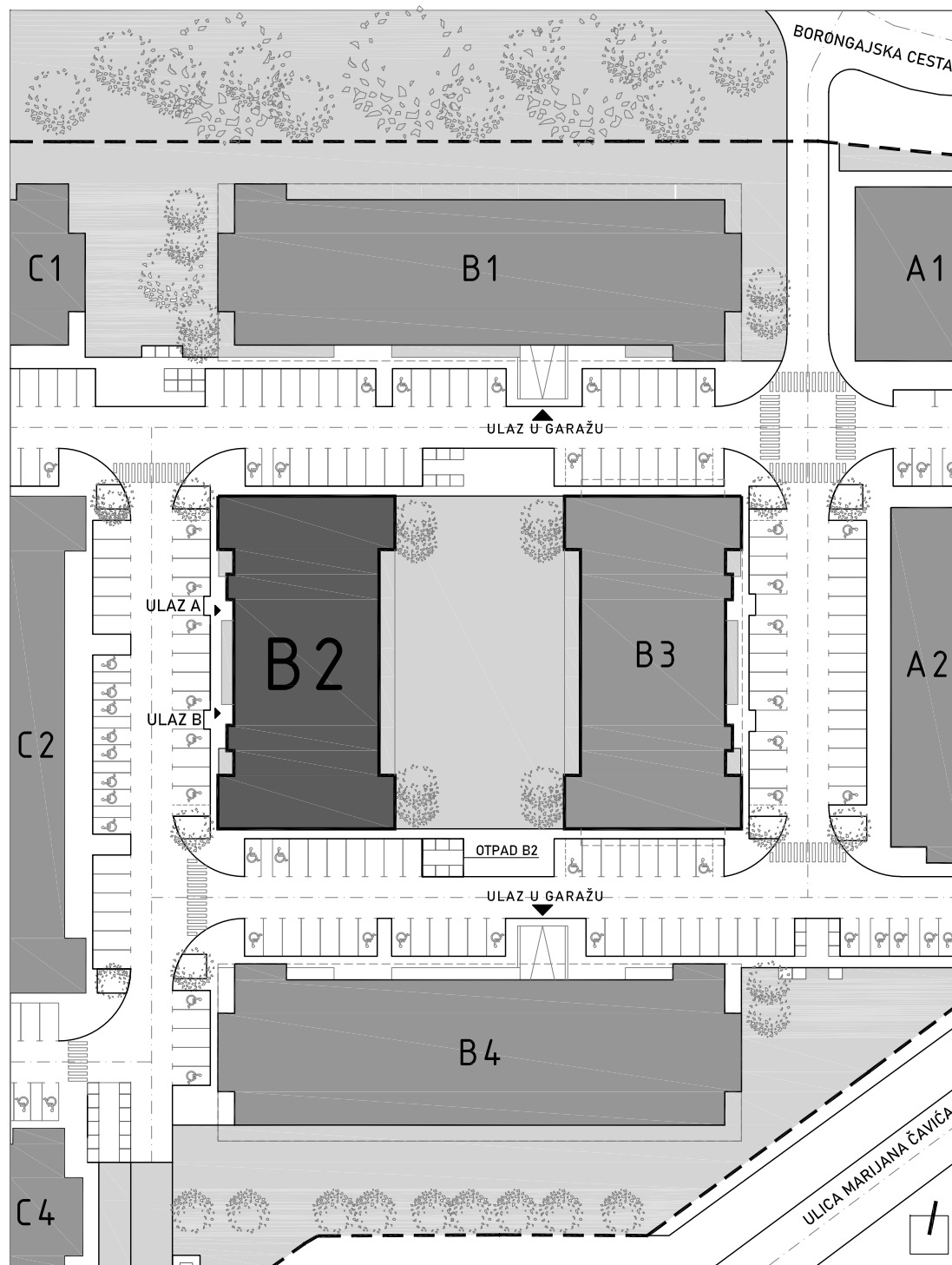


STAN B2-B-72

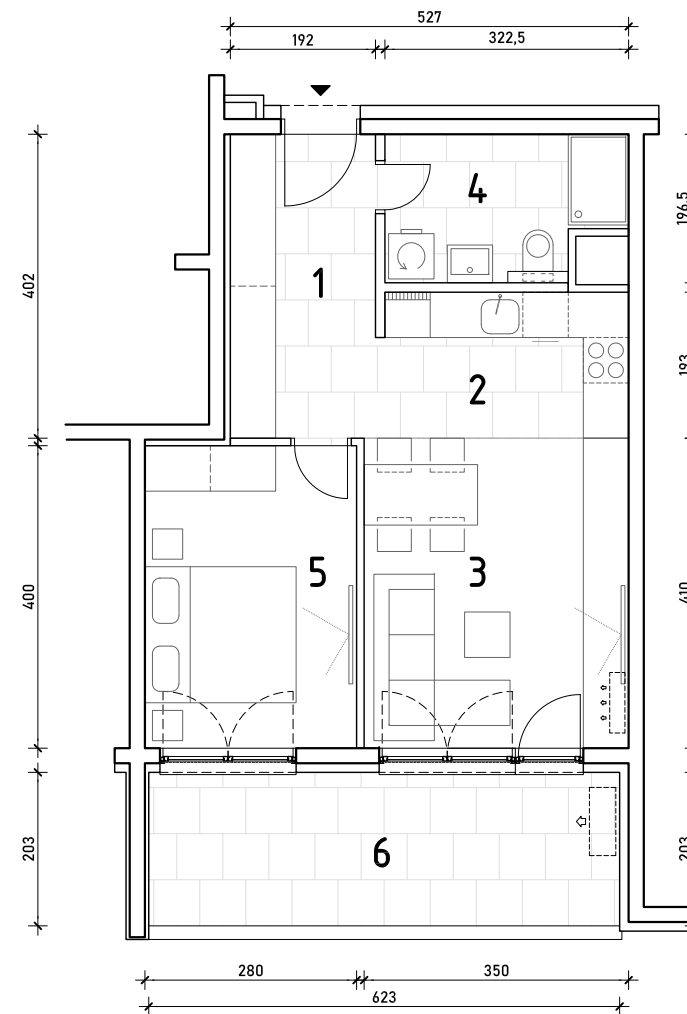
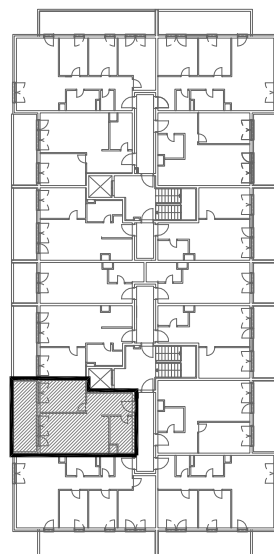
8. KAT - dvosoban

1. hodnik	7,72 m ²
2. kuhinja	6,39 m ²
3. blag.+dn.boravak	14,35 m ²
4. kupaonica	5,77 m ²
5. spavaća soba	11,20 m ²
6. loggia 12,65x0,75	9,49 m ²

54,92 m²



POLOŽAJ STANA U ZGRADI
8. KAT



POLOŽAJ STANA NA PROČELJU
zapadno pročelje

