

STAN B2-B-55

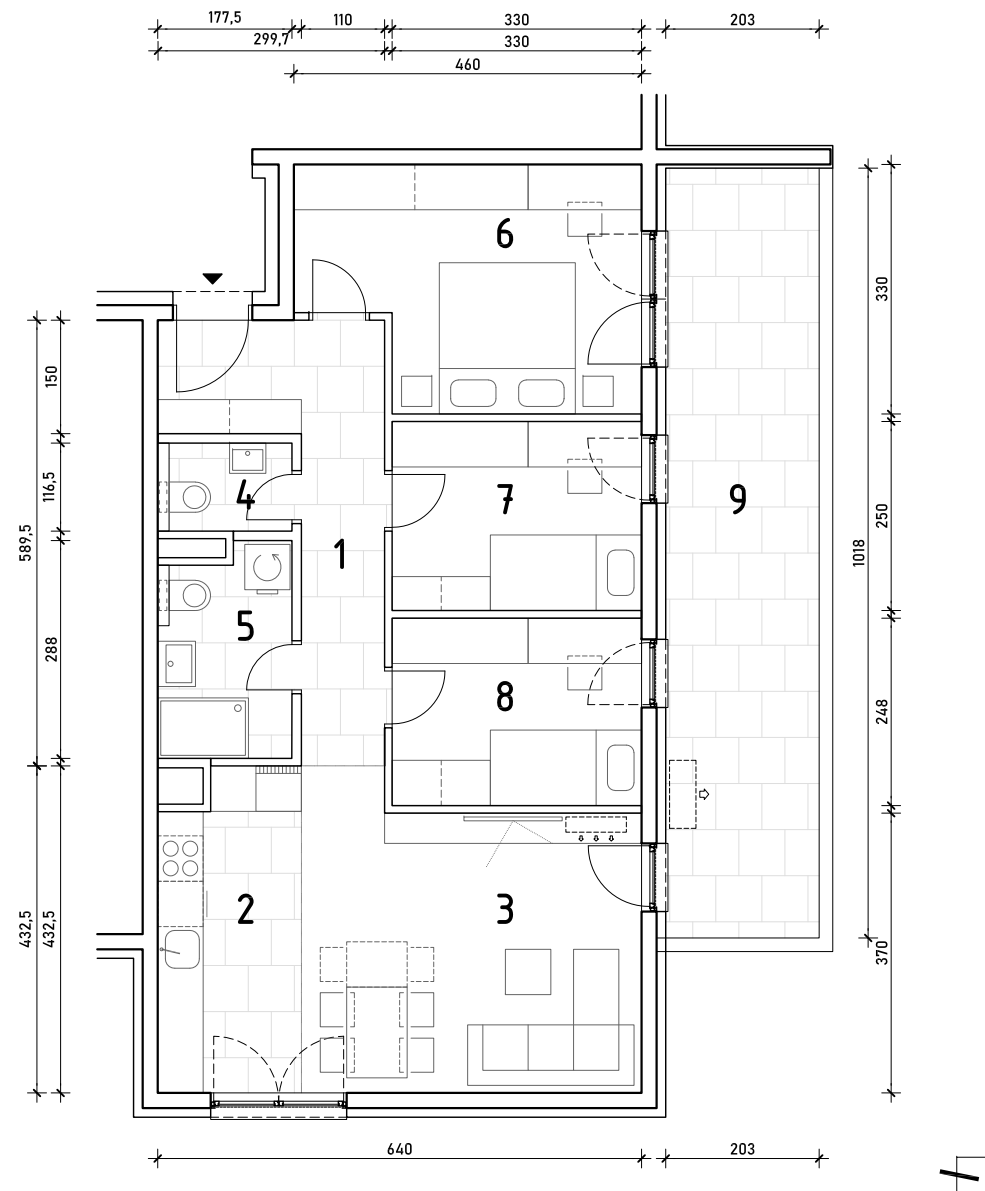
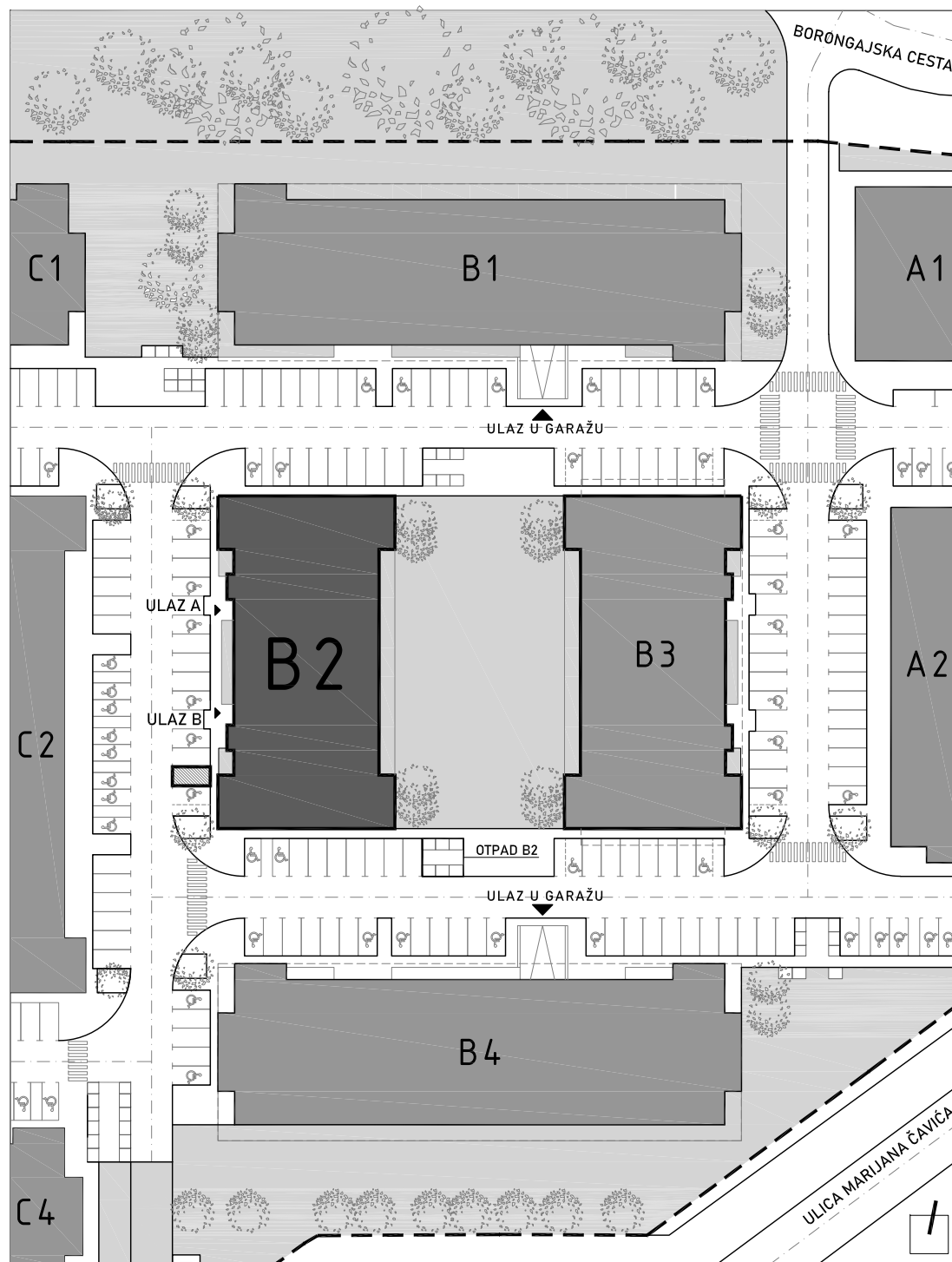
6. KAT - četverosoban

1. hodnik	9,33 m ²
2. kuhinja	7,79 m ²
3. blag.+dn.boravak	17,34 m ²
4. wc	2,07 m ²
5. kupaonica	4,79 m ²
6. spavaća soba 1	13,44 m ²
7. spavaća soba 2	8,25 m ²
8. spavaća soba 3	8,18 m ²
9. natkr. balkon 20,67x0,50	10,34 m ²

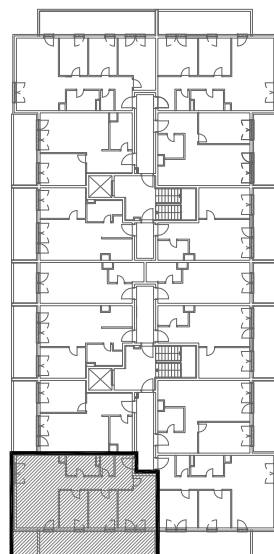
81,53 m²

PM B62

12,50 m²



POLOŽAJ STANA U ZGRADI
6. KAT

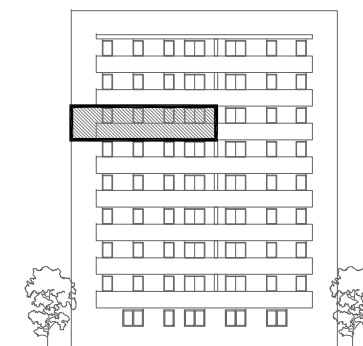


POLOŽAJ STANA NA PROČELJU

zapadno pročelje



južno pročelje



VANJSKO PARKIRALIŠNO MJESTO
B62

