

STAN B2-B-54

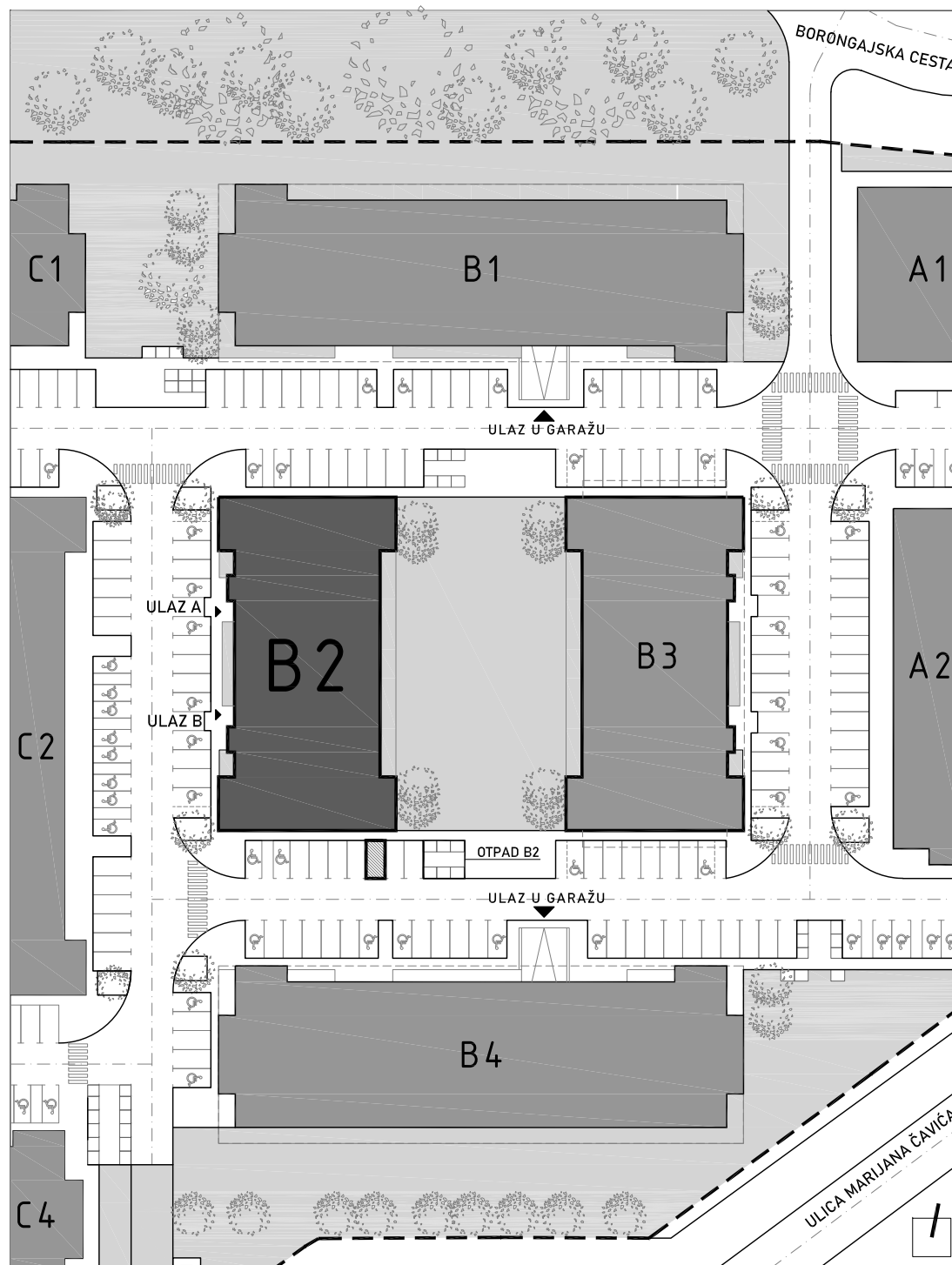
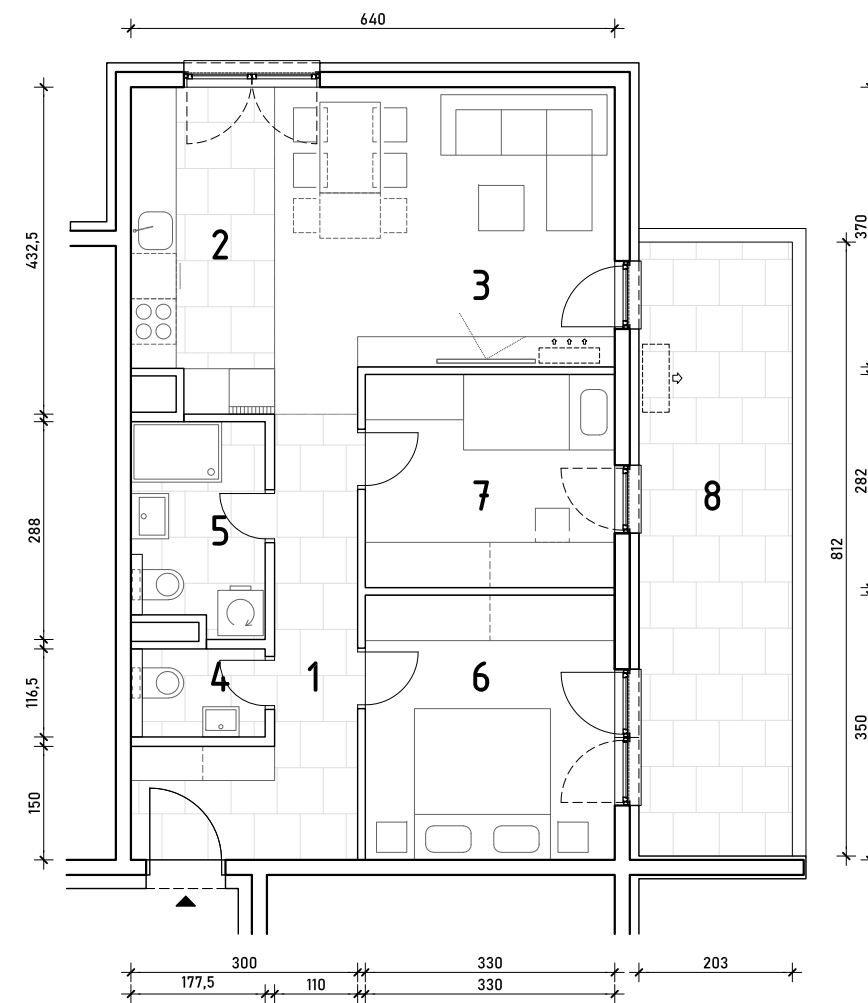
6. KAT - trosoban

1. hodnik	9,33 m ²
2. kuhinja	7,79 m ²
3. blag.+dn.boravak	17,34 m ²
4. wc	2,07 m ²
5. kupaonica	4,79 m ²
6. spavaća soba 1	11,55 m ²
7. spavaća soba 2	9,13 m ²
8. natkr. balkon 16,48x0,50	8,24 m ²

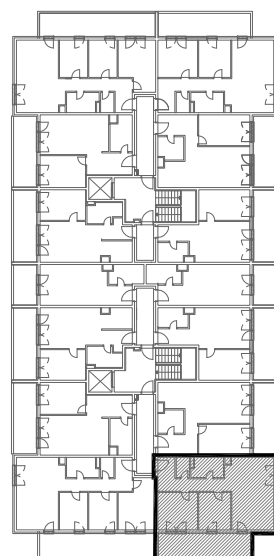
70,42 m²

PM B54

12,50 m²

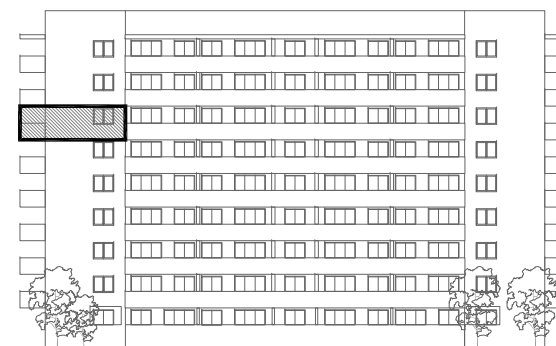


POLOŽAJ STANA U ZGRADI
6. KAT

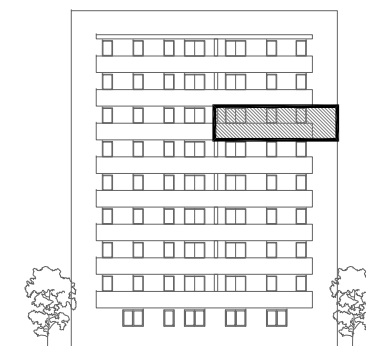


POLOŽAJ STANA NA PROČELJU

istočno pročelje



južno pročelje



VANJSKO PARKIRALIŠNO MJESTO
B54

