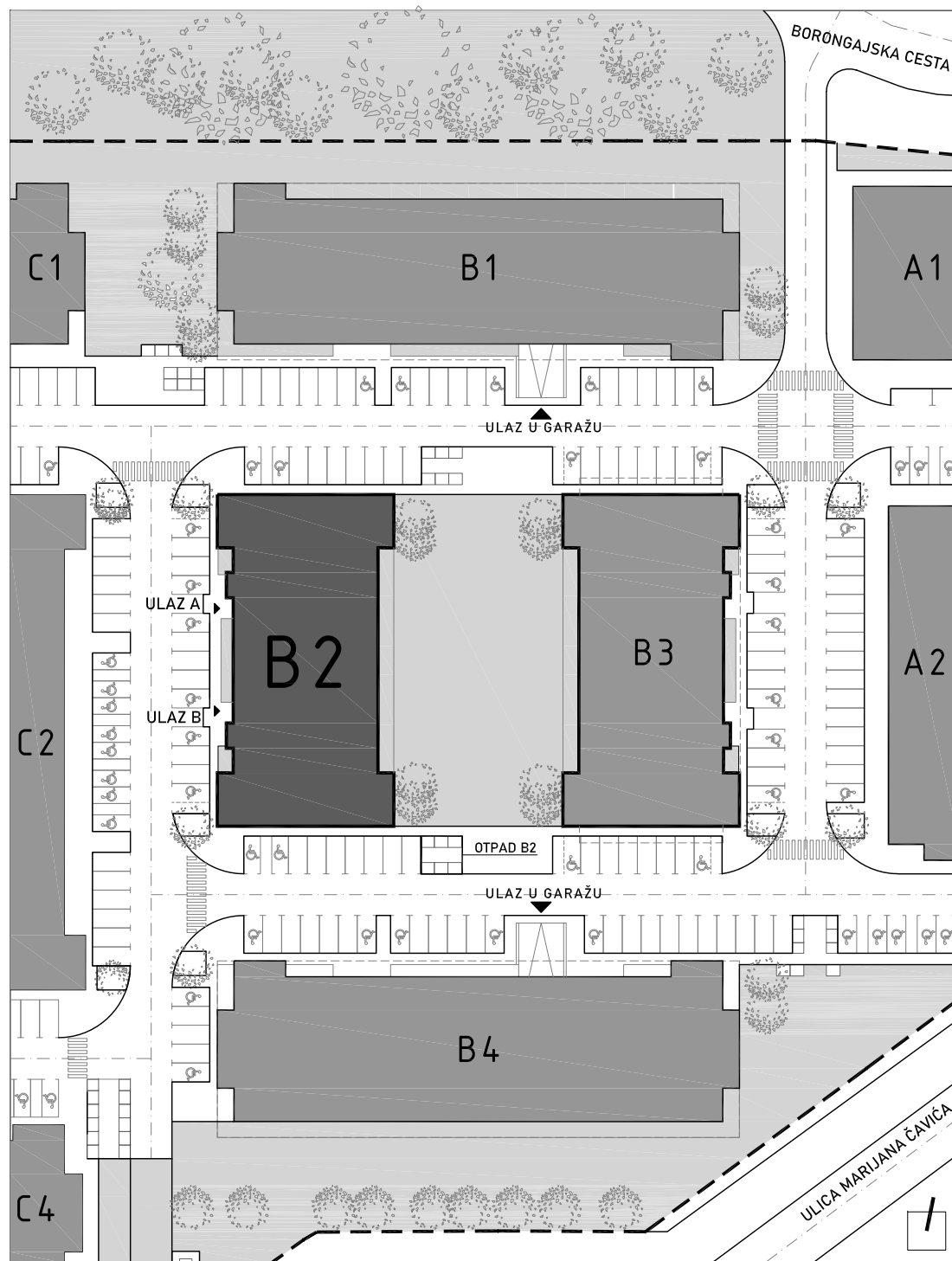
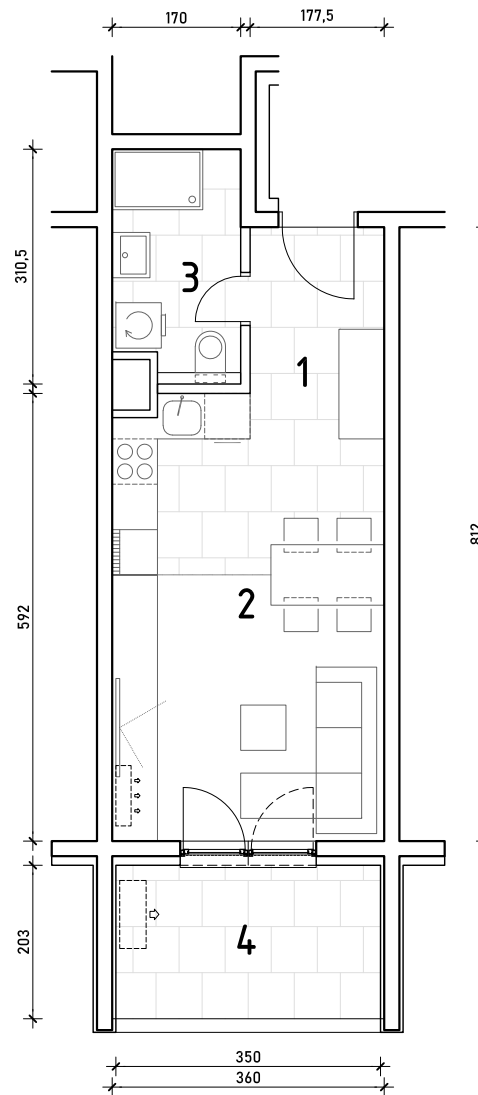


# STAN B2-B-34

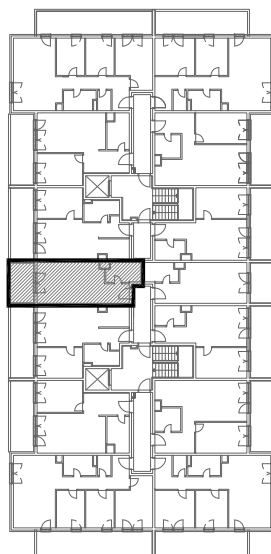
4. KAT - jednosoban

1. hodnik	3,91 m <sup>2</sup>
2. kuh.+blag.+dn.boravak	21,12 m <sup>2</sup>
4. kupaonica	5,02 m <sup>2</sup>
5. loggia 7,11x0,75	5,33 m <sup>2</sup>

**35,38 m<sup>2</sup>**



POLOŽAJ STANA U ZGRADI  
4. KAT



POLOŽAJ STANA NA PROČELJU  
zapadno pročelje

