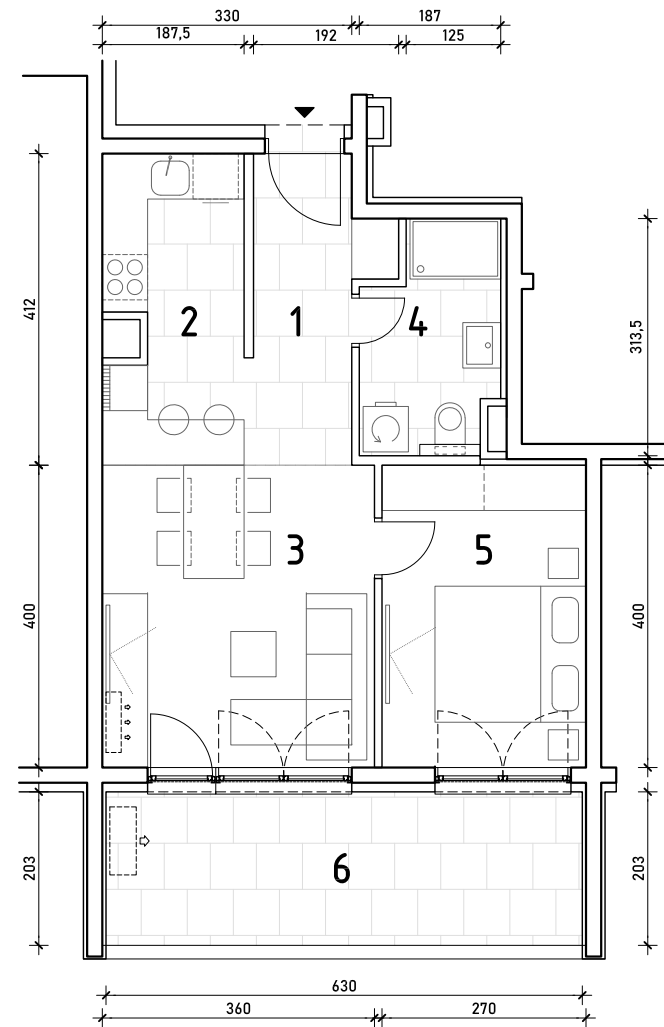
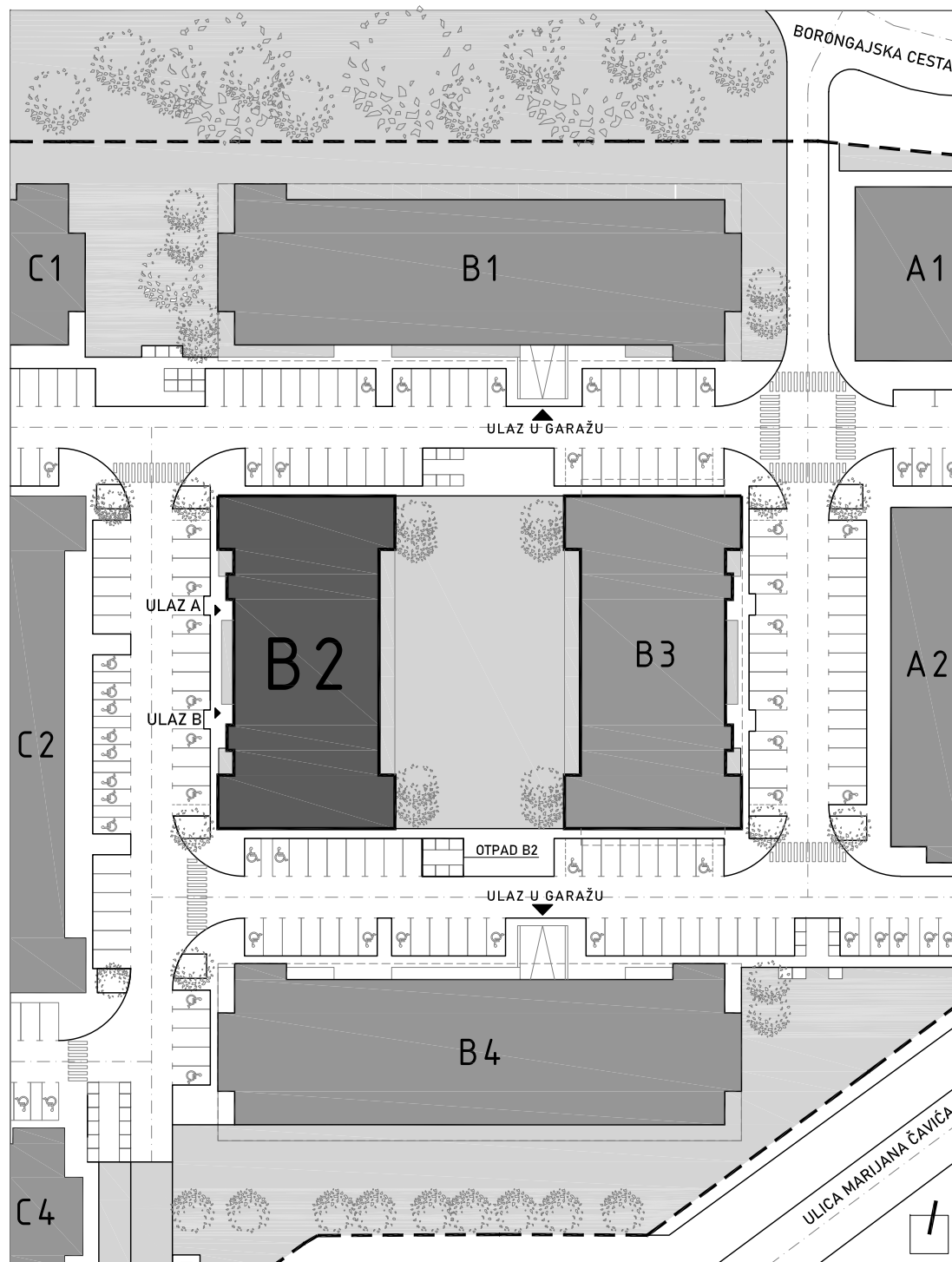


# STAN B2-B-33

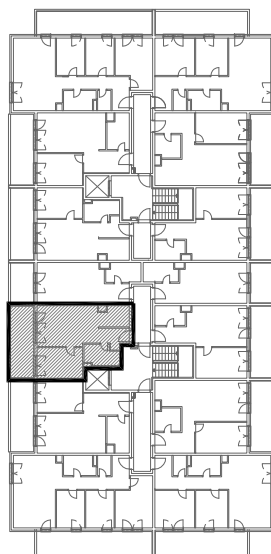
4. KAT - dvosoban

1. hodnik	4,00 m <sup>2</sup>
2. kuhinja	7,30 m <sup>2</sup>
3. blag.+dn.boravak	16,42 m <sup>2</sup>
4. kupaonica	5,10 m <sup>2</sup>
5. spavaća soba	10,80 m <sup>2</sup>
6. loggia 12,79x0,75	9,59 m <sup>2</sup>

**53,21 m<sup>2</sup>**



POLOŽAJ STANA U ZGRADI  
4. KAT



POLOŽAJ STANA NA PROČELJU  
zapadno pročelje

