

# STAN B2-B-31

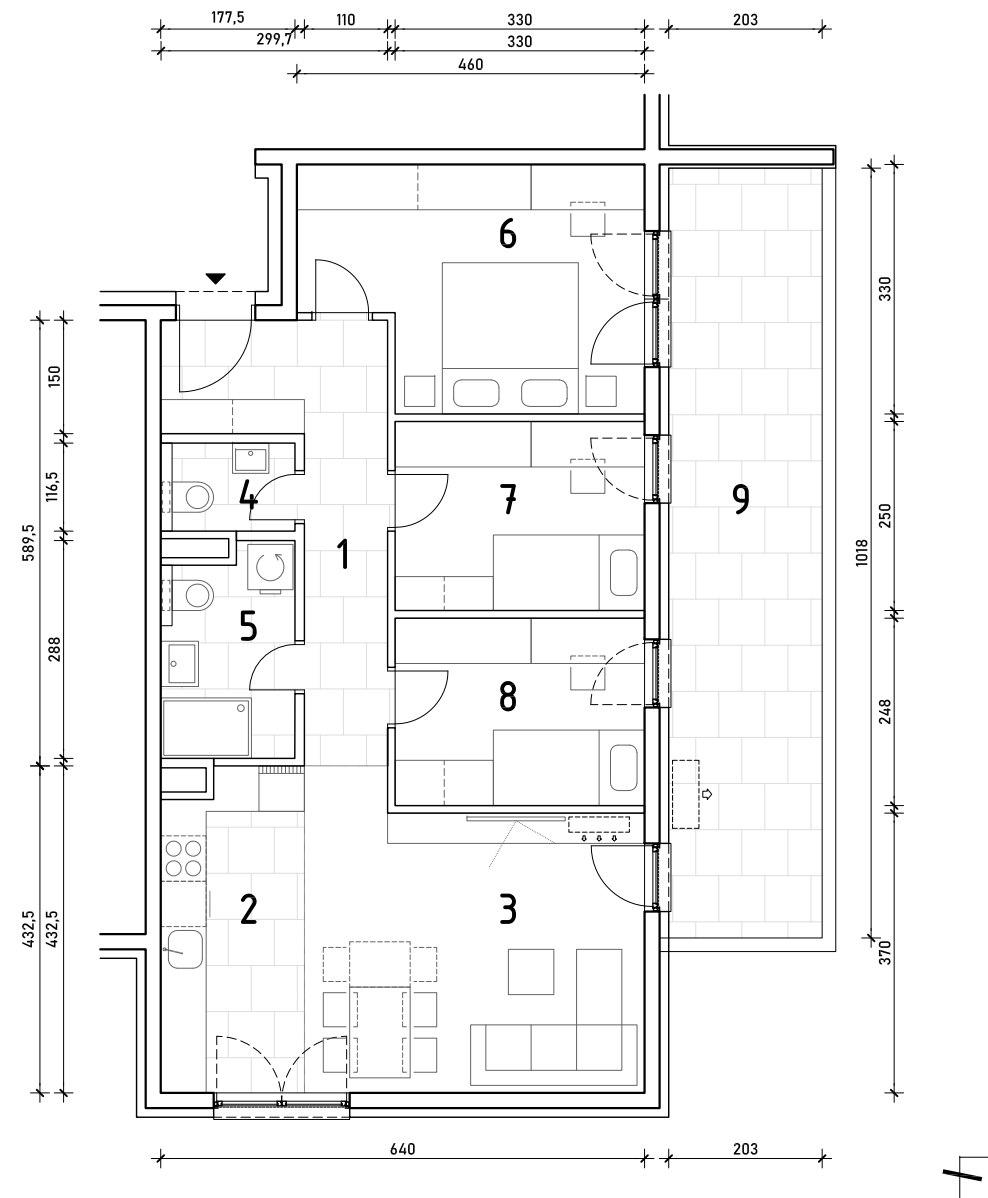
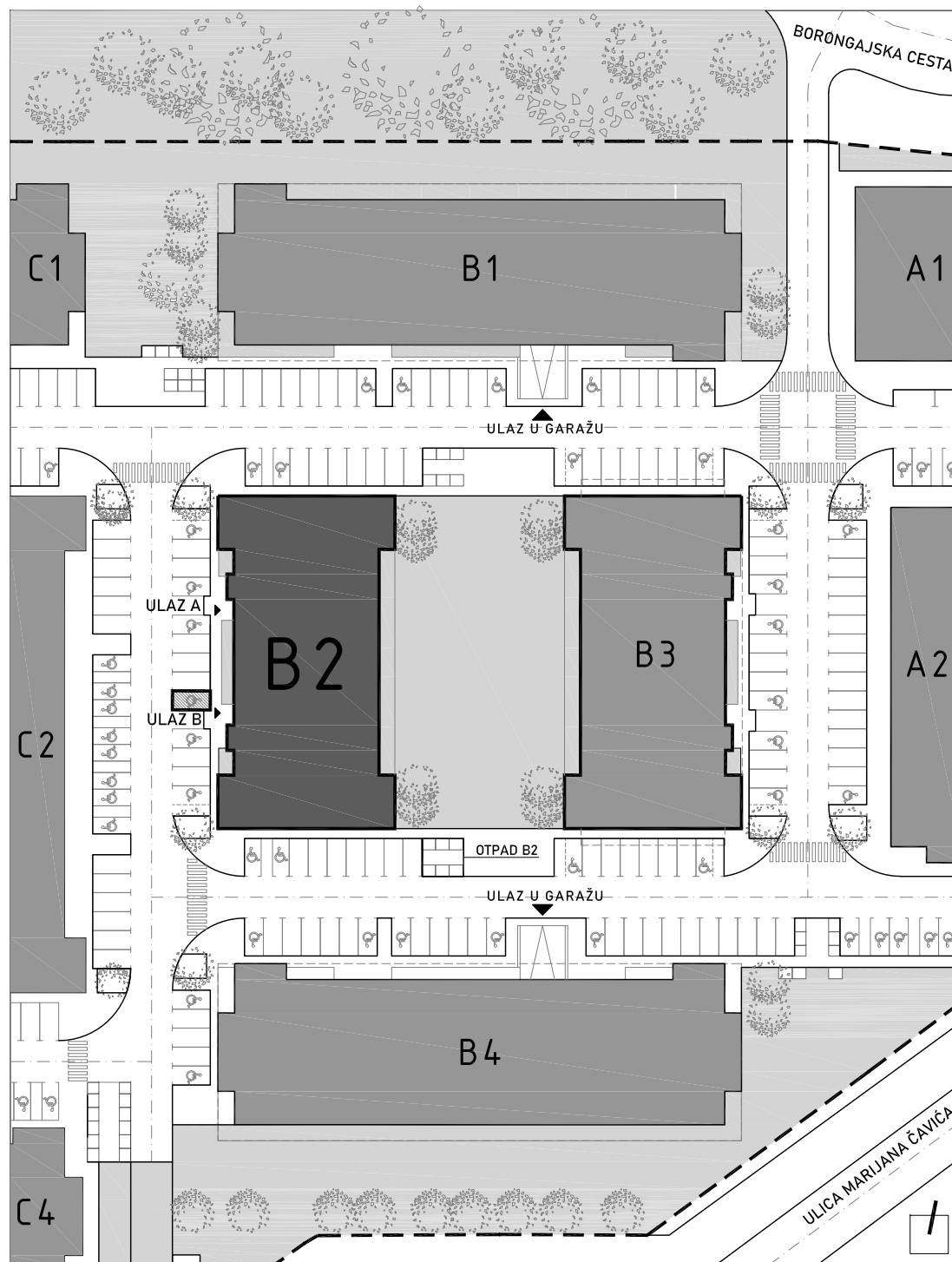
3. KAT - četverosoban

1. hodnik	9,33 m <sup>2</sup>
2. kuhinja	7,91 m <sup>2</sup>
3. blag.+dn.boravak	17,34 m <sup>2</sup>
4. wc	2,07 m <sup>2</sup>
5. kupaonica	4,79 m <sup>2</sup>
6. spavaća soba 1	13,44 m <sup>2</sup>
7. spavaća soba 2	8,25 m <sup>2</sup>
8. spavaća soba 3	8,18 m <sup>2</sup>
9. natkr. balkon 20,67x0,50	10,34 m <sup>2</sup>

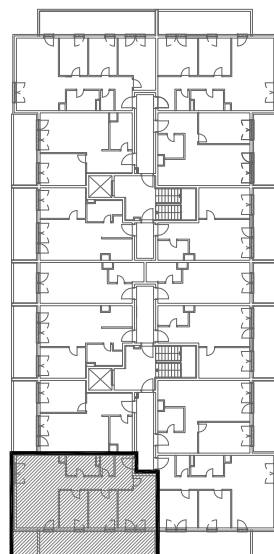
**81,65 m<sup>2</sup>**

PM B65

**12,50 m<sup>2</sup>**



POLOŽAJ STANA U ZGRADI  
3. KAT



POLOŽAJ STANA NA PROČELJU

zapadno pročelje



južno pročelje



VANJSKO PARKIRALIŠNO MJESTO  
B65

