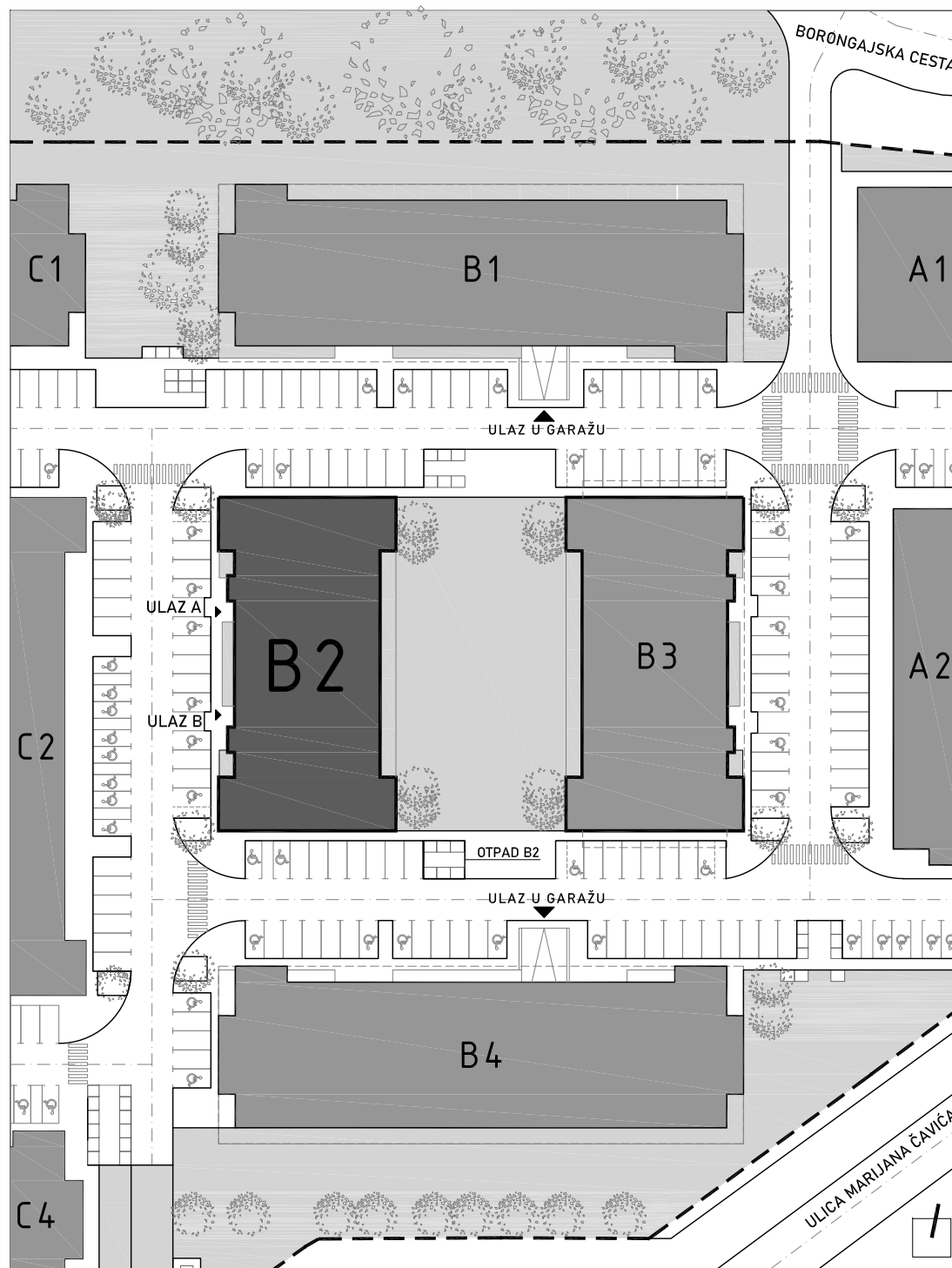
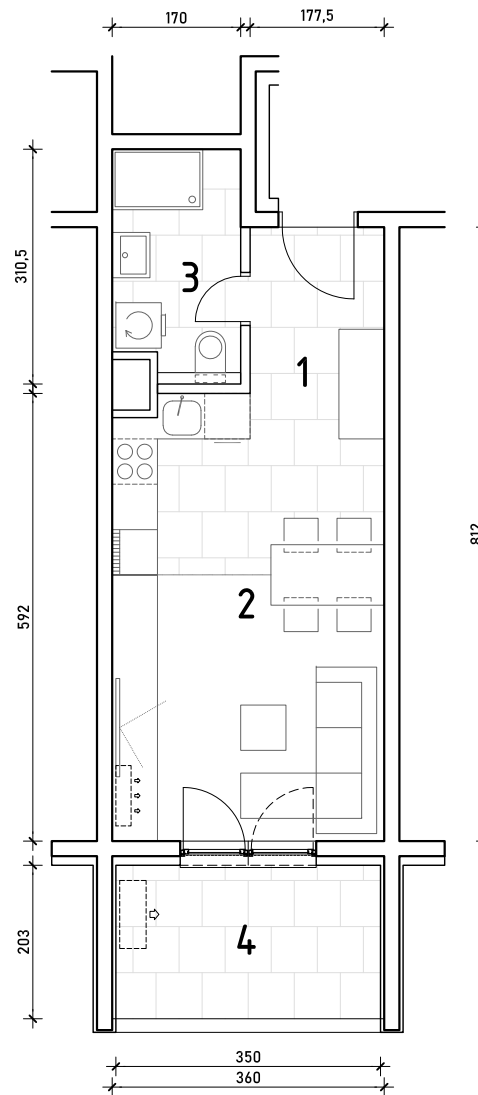


STAN B2-B-26

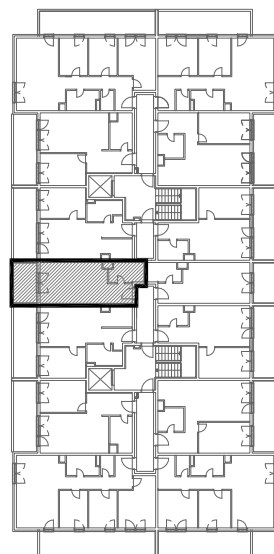
3. KAT - jednosoban

1. hodnik	3,91 m ²
2. kuh.+blag.+dn.boravak	21,12 m ²
4. kupaonica	5,02 m ²
5. loggia 7,11x0,75	5,33 m ²

35,38 m²



POLOŽAJ STANA U ZGRADI
3. KAT



POLOŽAJ STANA NA PROČELJU
zapadno pročelje

