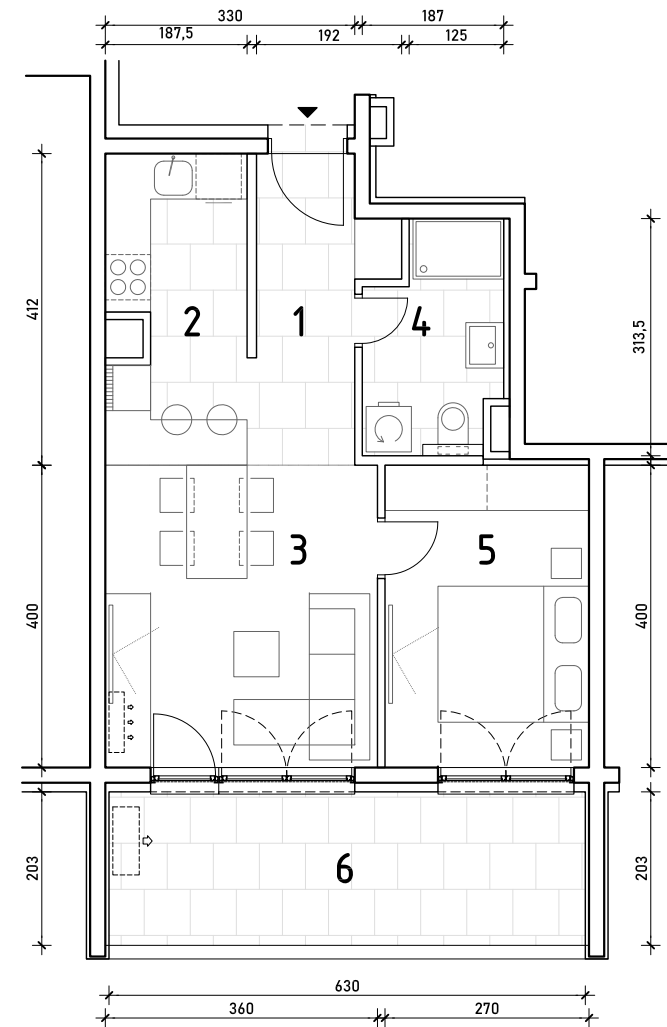
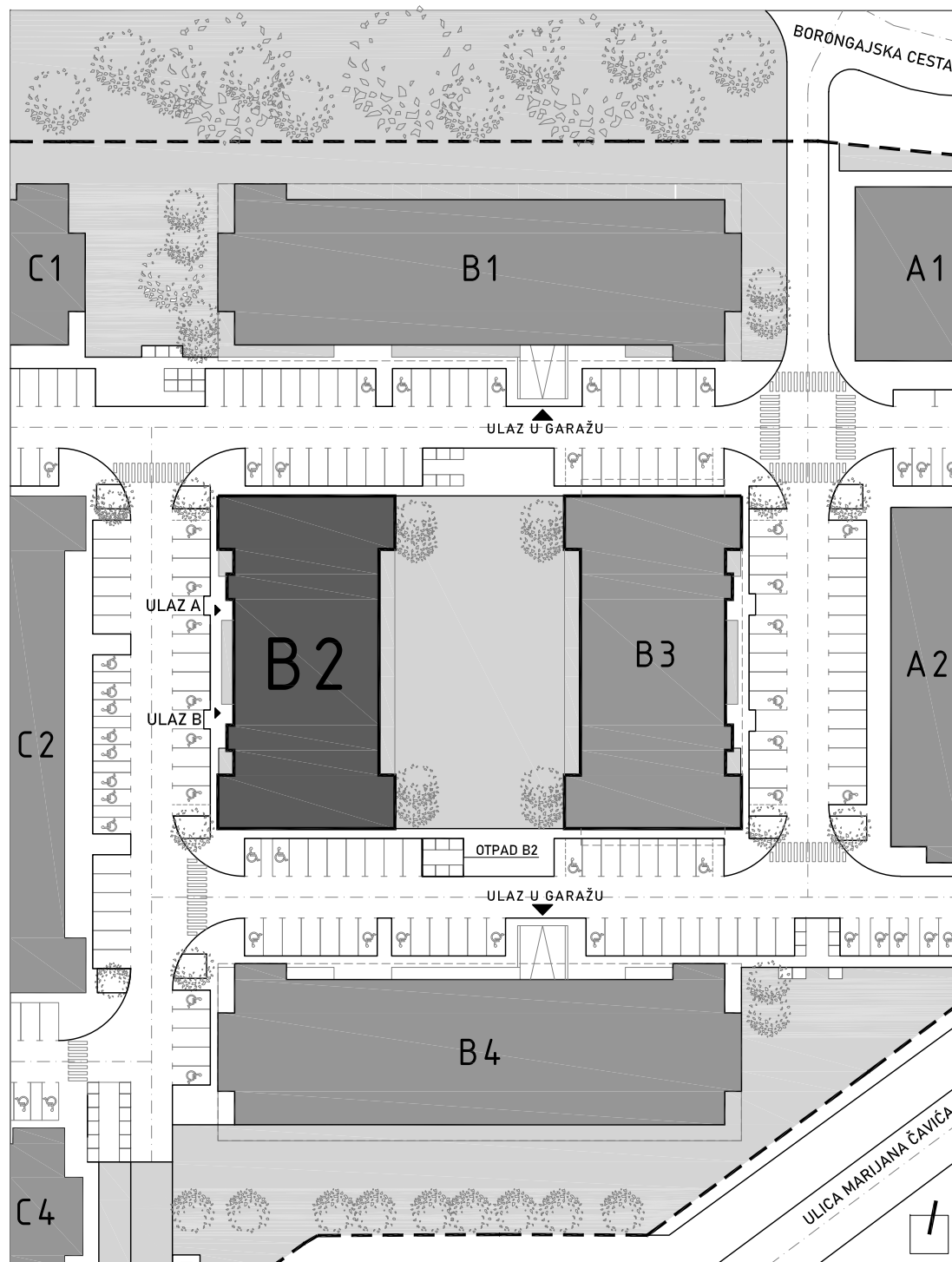


STAN B2-B-25

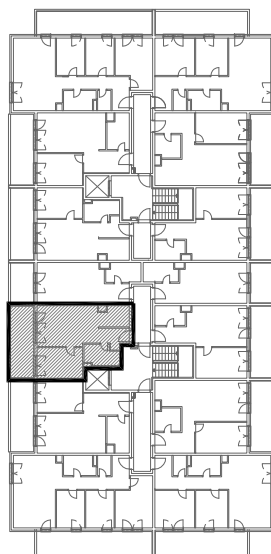
3. KAT - dvosoban

1. hodnik	4,00 m ²
2. kuhinja	7,30 m ²
3. blag.+dn.boravak	16,42 m ²
4. kupaonica	5,10 m ²
5. spavaća soba	10,80 m ²
6. loggia 12,79x0,75	9,59 m ²

53,21 m²



POLOŽAJ STANA U ZGRADI
3. KAT



POLOŽAJ STANA NA PROČELJU
zapadno pročelje

