

STAN B2-B-22

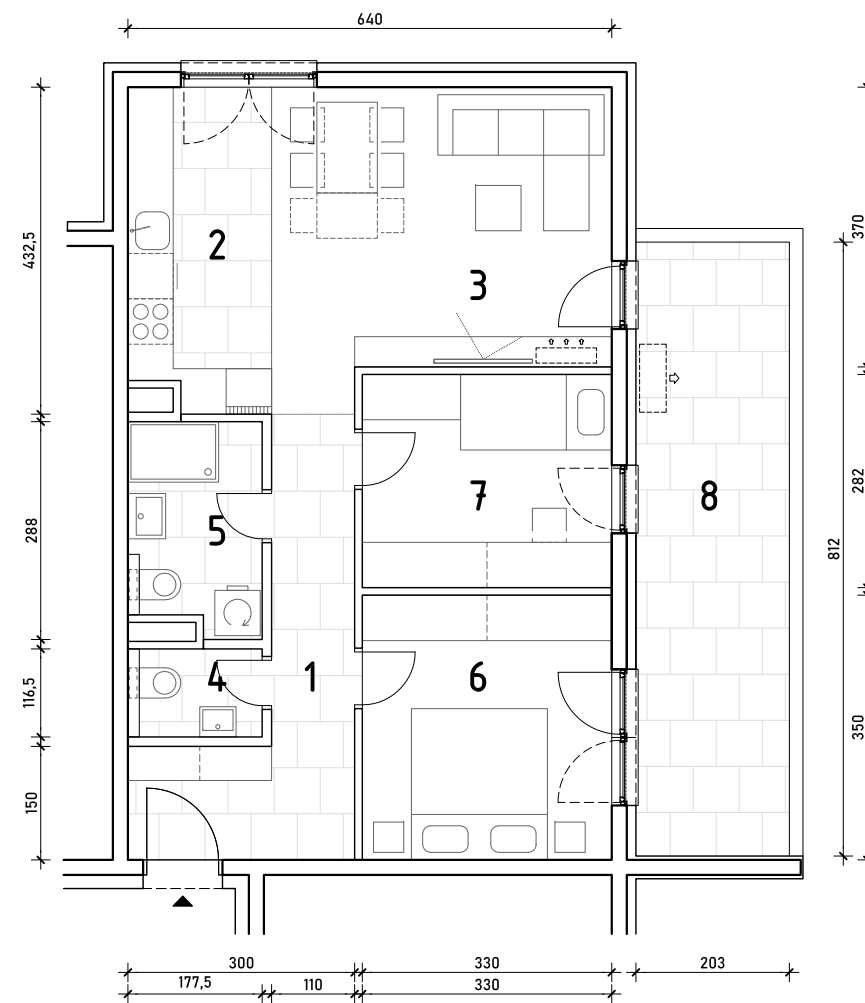
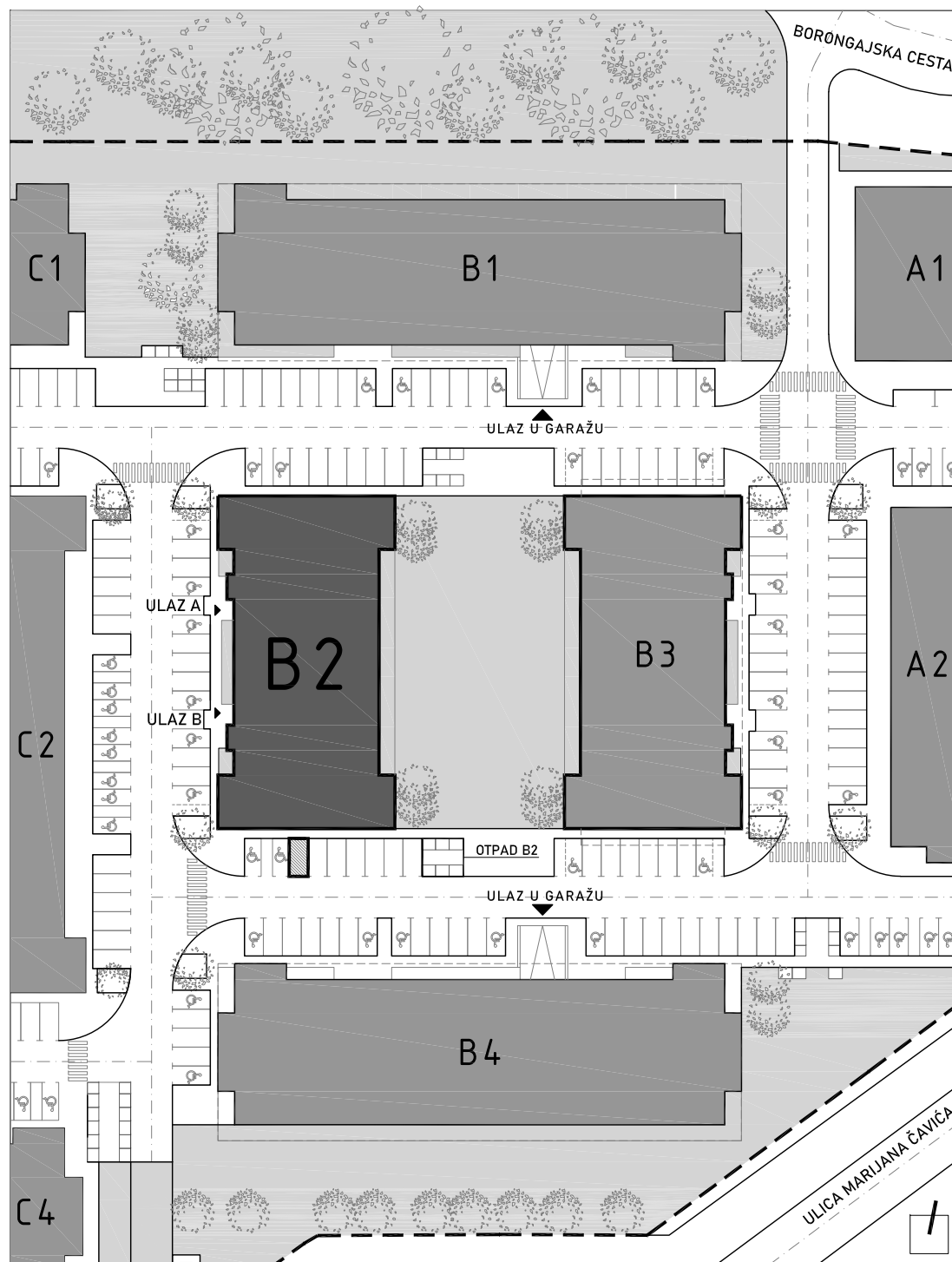
2. KAT - trosoban

| | |
|-----------------------------|----------------------|
| 1. hodnik | 9,33 m ² |
| 2. kuhinja | 7,91 m ² |
| 3. blag.+dn.boravak | 17,34 m ² |
| 4. wc | 2,07 m ² |
| 5. kupaonica | 4,79 m ² |
| 6. spavaća soba 1 | 11,55 m ² |
| 7. spavaća soba 2 | 9,13 m ² |
| 8. natkr. balkon 16,48x0,50 | 8,24 m ² |

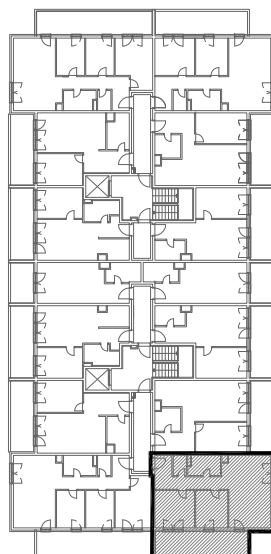
70,54 m²

PM B58

12,50 m²

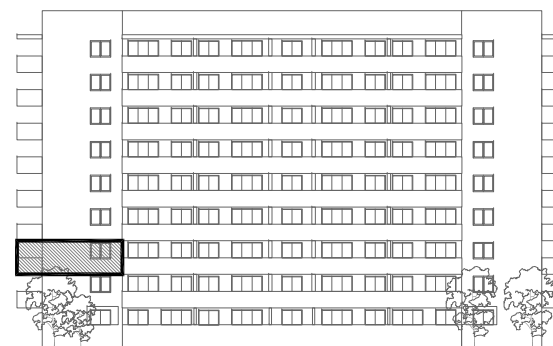


POLOŽAJ STANA U ZGRADI
2. KAT



POLOŽAJ STANA NA PROČELJU

istočno pročelje



južno pročelje



VANJSKO PARKIRALIŠNO MJESTO
B58

