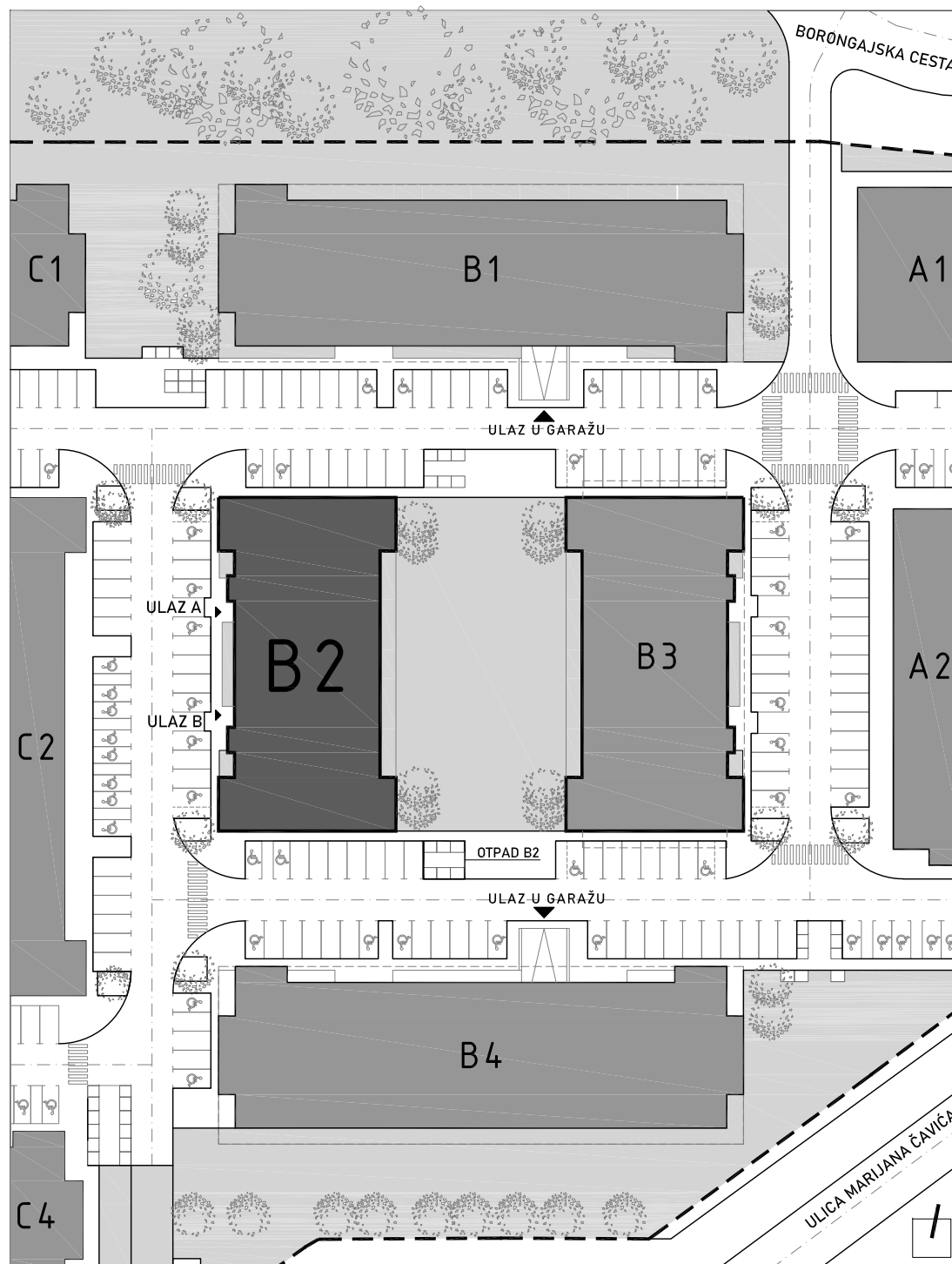
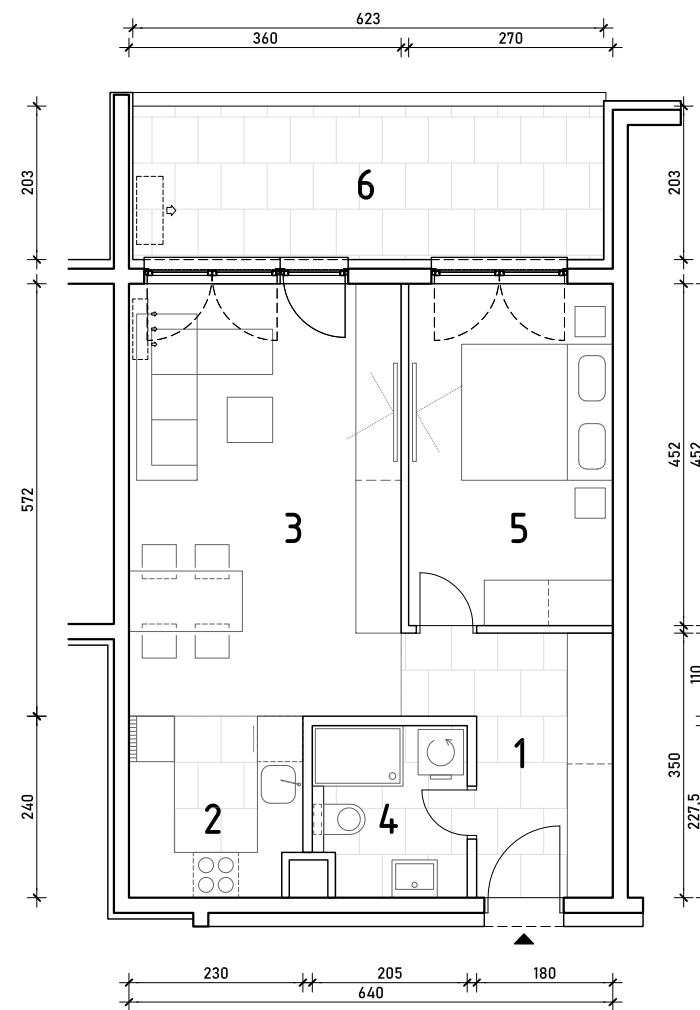


# STAN B2-B-21

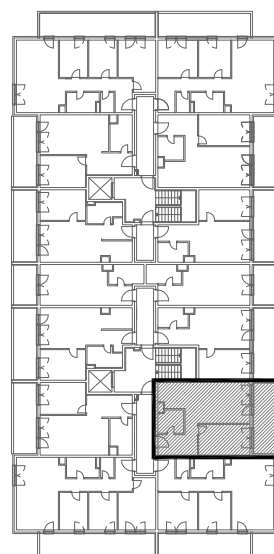
2. KAT - dvosoban

1. hodnik	7,40 m <sup>2</sup>
2. kuhinja	5,35 m <sup>2</sup>
3. blag.+dn.boravak	20,59 m <sup>2</sup>
4. kupaonica	4,48 m <sup>2</sup>
5. spavaća soba	12,20 m <sup>2</sup>
6. loggia 12,65x0,75	9,49 m <sup>2</sup>

**59,51 m<sup>2</sup>**



POLOŽAJ STANA U ZGRADI  
2. KAT



POLOŽAJ STANA NA PROČELJU

изглед на фасаду

