

# STAN B2-B-01

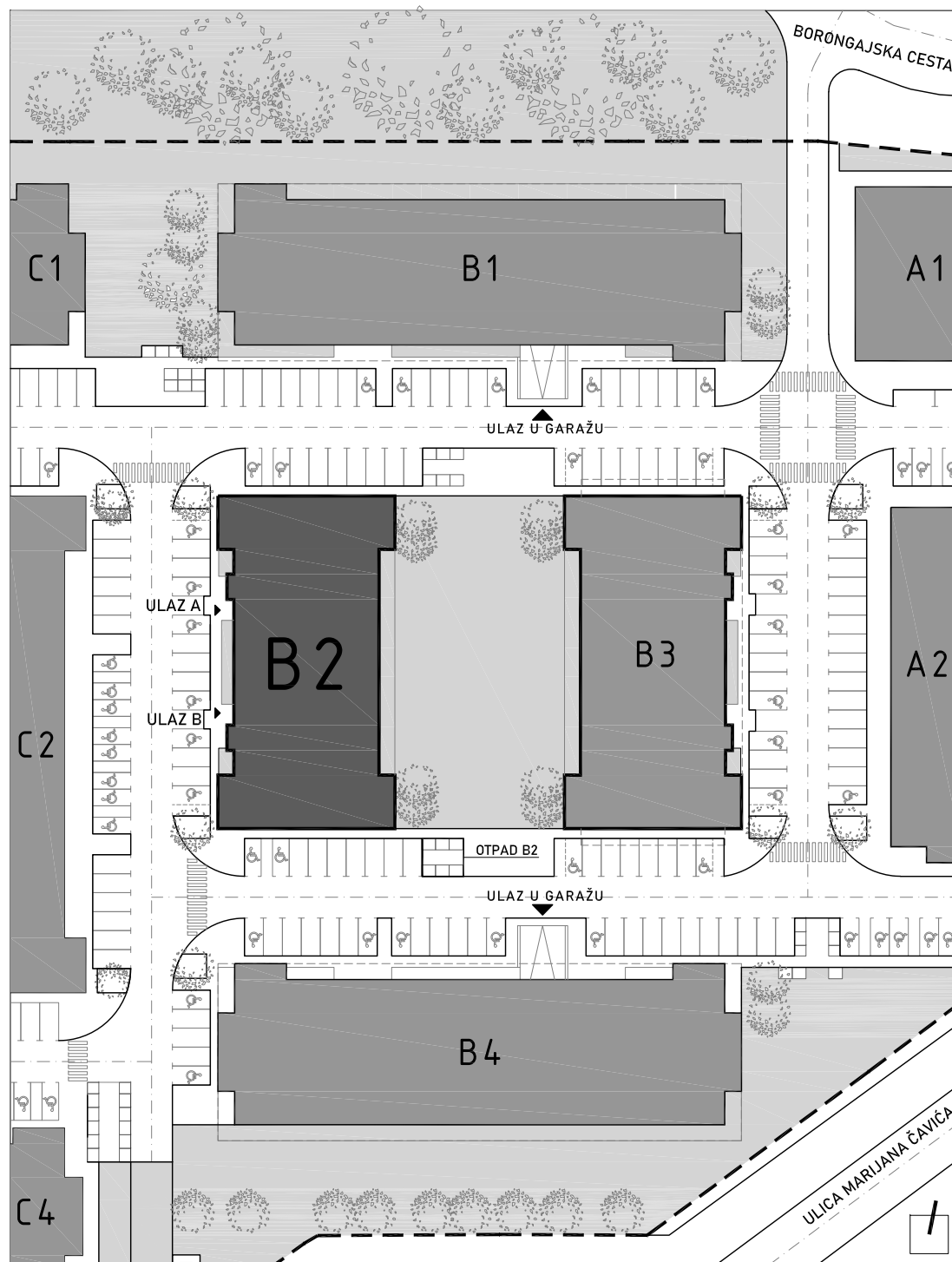
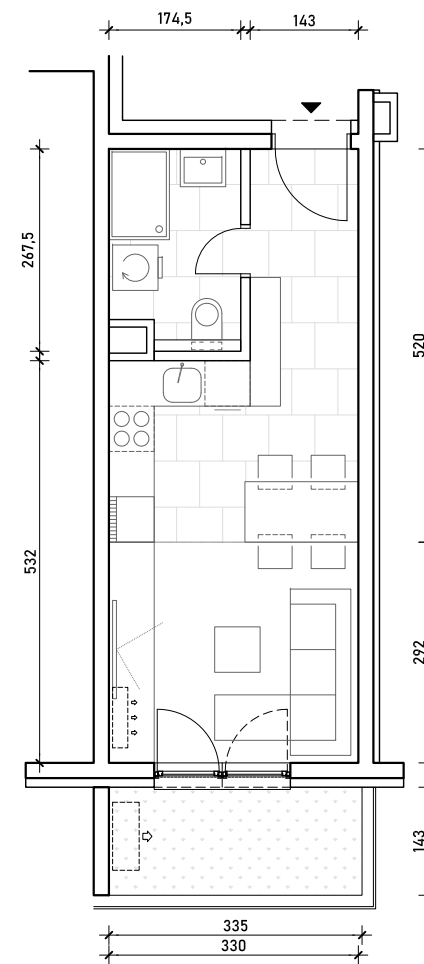
PRIZEMLJE - jednosoban

1. hodnik	4,00 m <sup>2</sup>
2. kuh.+blag.+dn.boravak	17,56 m <sup>2</sup>
3. kupaonica	4,42 m <sup>2</sup>

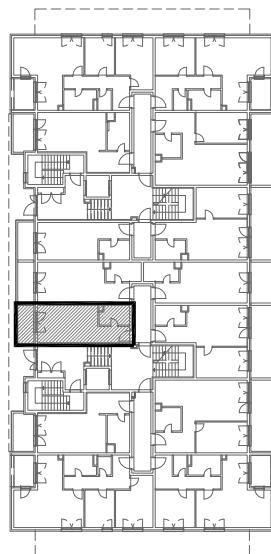
**25,98 m<sup>2</sup>**

4. VRT 4,79 m<sup>2</sup>

**4,79 m<sup>2</sup>**



POLOŽAJ STANA U ZGRADI  
PRIZEMLJE



POLOŽAJ STANA NA PROČELJU  
zapadno pročelje

