

PODZEMNA GARAŽA A

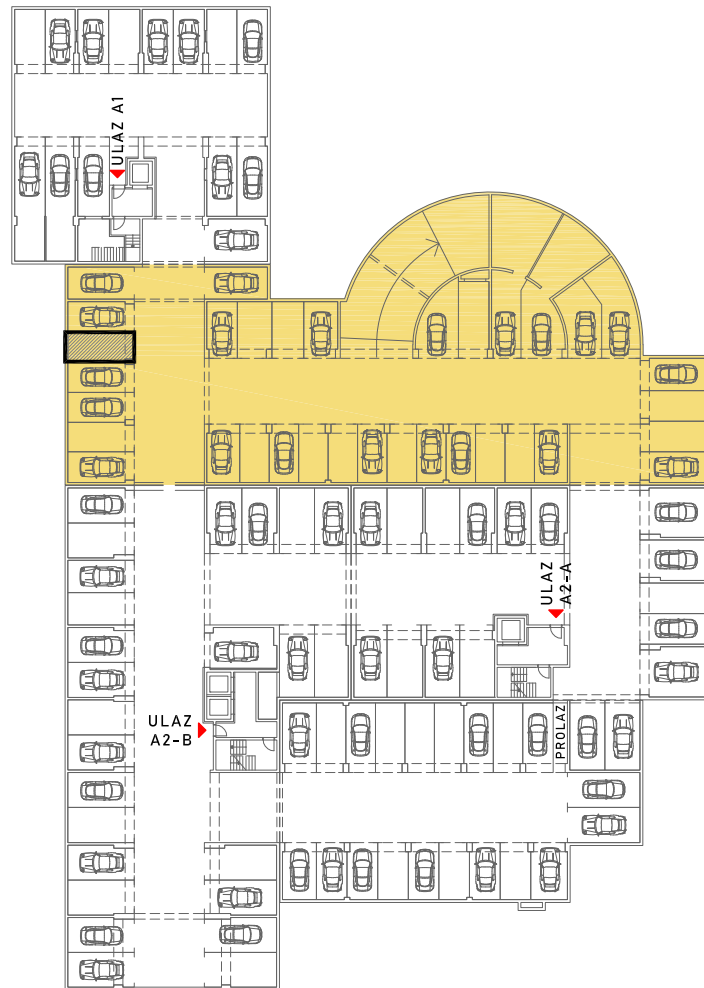
DILATACIJA G1

ULICA MARIJANA ČAVIĆA - BORONGAJSKA CESTA, ZAGREB

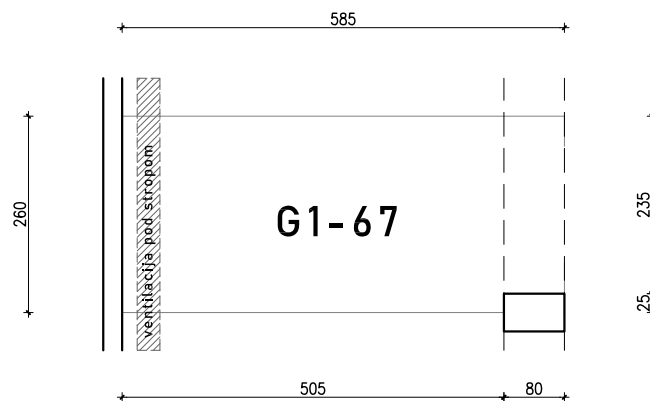
PGM G1-67

PODRUM - 3

P = 15,01m²



POLOŽAJ PGM U GARAŽI



visina etaže ≈ 245 cm

NAPOMENA: na nacrtu nisu prikazane instalacije iznad kote +220 cm od gotovog poda.