

# PODZEMNA GARAŽA A

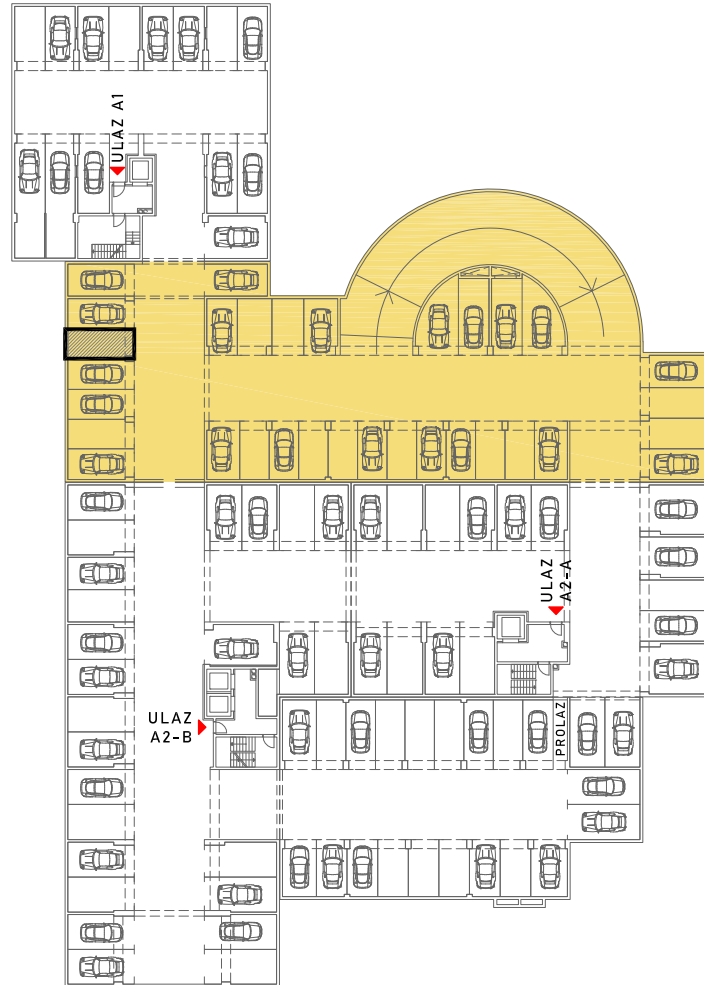
DILATACIJA G1

ULICA MARIJANA ČAVIĆA - BORONGAJSKA CESTA, ZAGREB

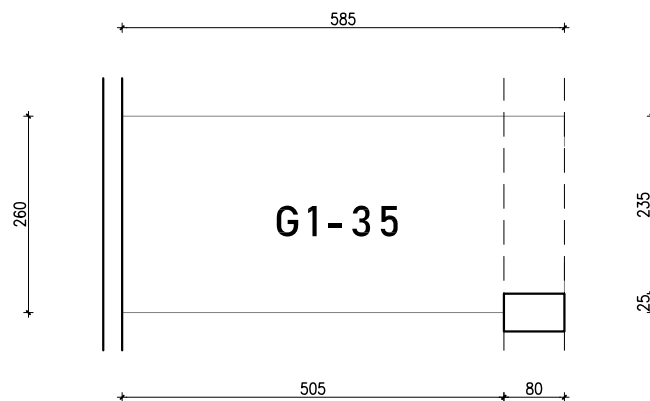
# PGM G1-35

## PODRUM -2

P= 15,01m<sup>2</sup>



POLOŽAJ PGM U GARAŽI



visina etaže ≈245 cm

NAPOMENA: na nacrtu nisu prikazane instalacije iznad kote +220 cm od gotovog poda.