

# PODZEMNA GARAŽA A

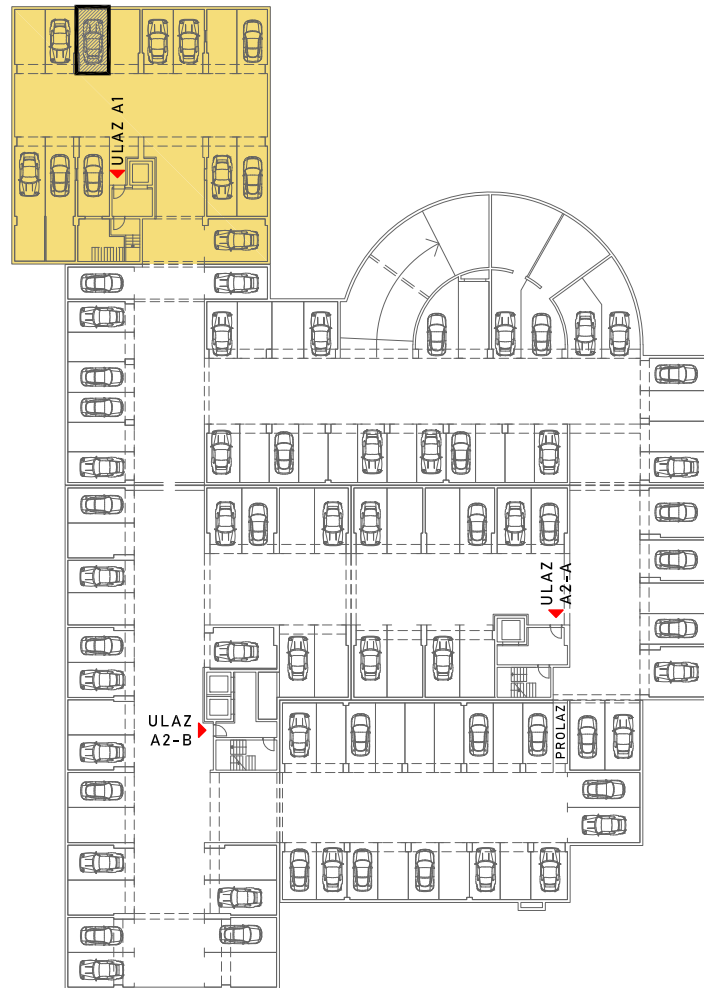
DILATACIJA A1

ULICA MARIJANA ČAVIĆA - BORONGAJSKA CESTA, ZAGREB

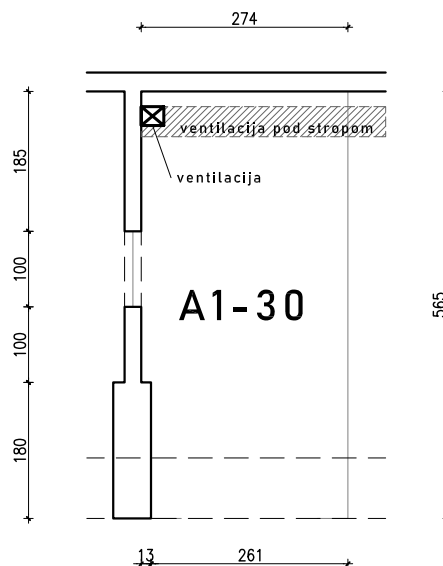
# PGM A1-30

## PODRUM - 3

P = 15,26m<sup>2</sup>



POLOŽAJ PGM U GARAŽI



visina etaže ≈ 245 cm

NAPOMENA: na nacrtu nisu prikazane instalacije iznad kote +220 cm od gotovog poda.