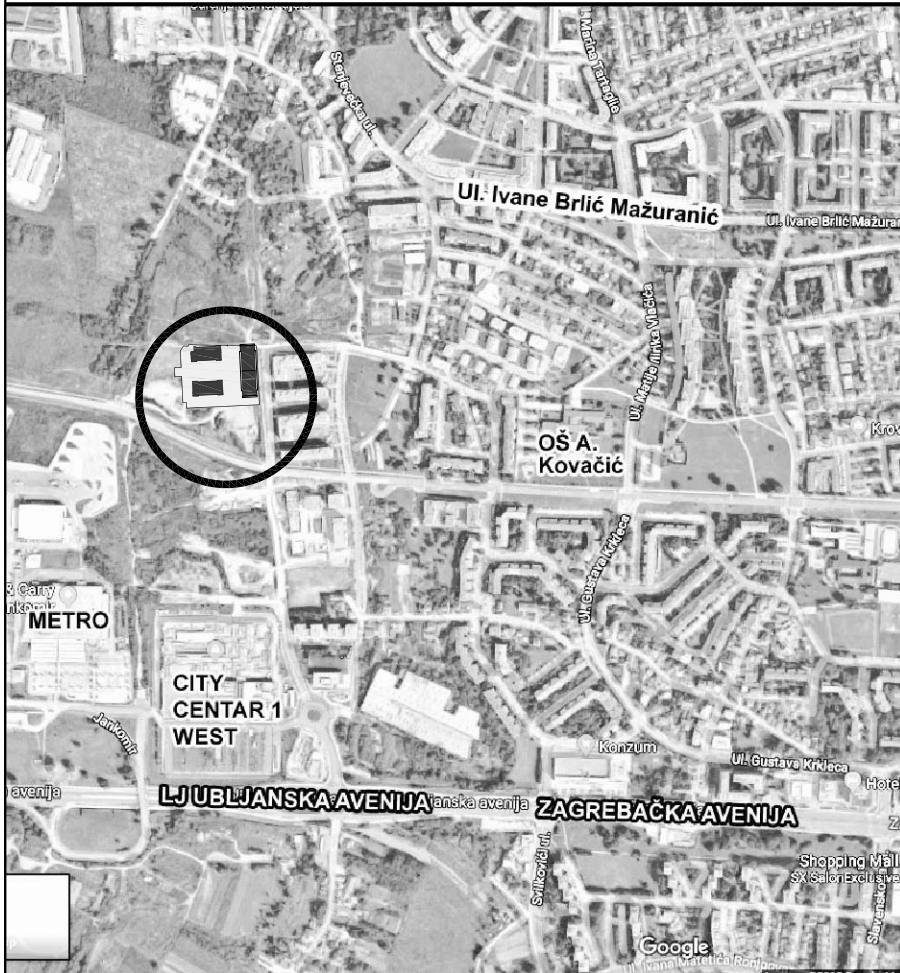
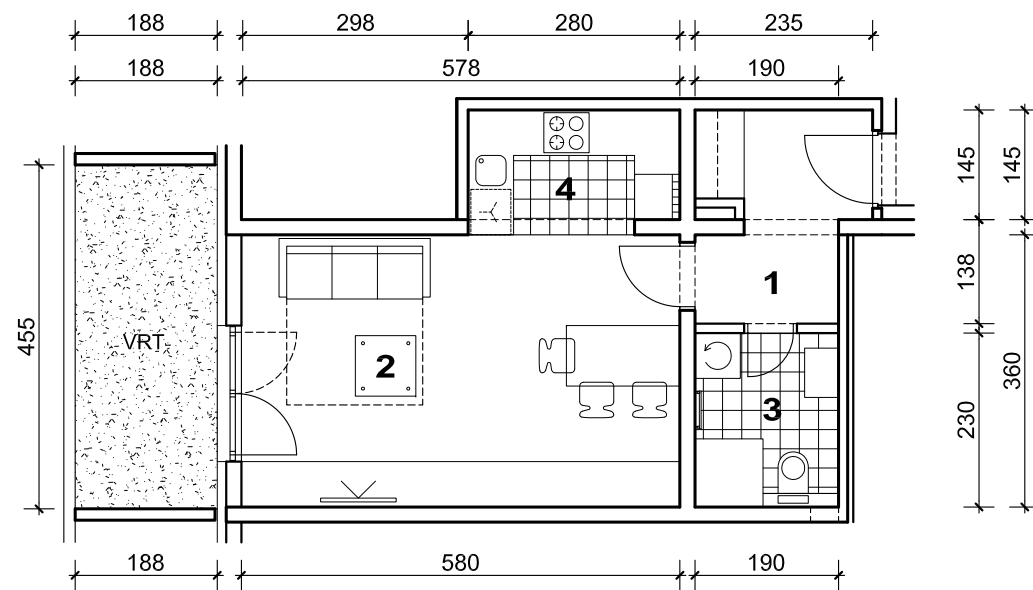


STAMBENA ZGRADA C, ŠPANSKO SJEVER, ZAGREB

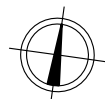
STAN B11



POLOŽAJ U GRADU



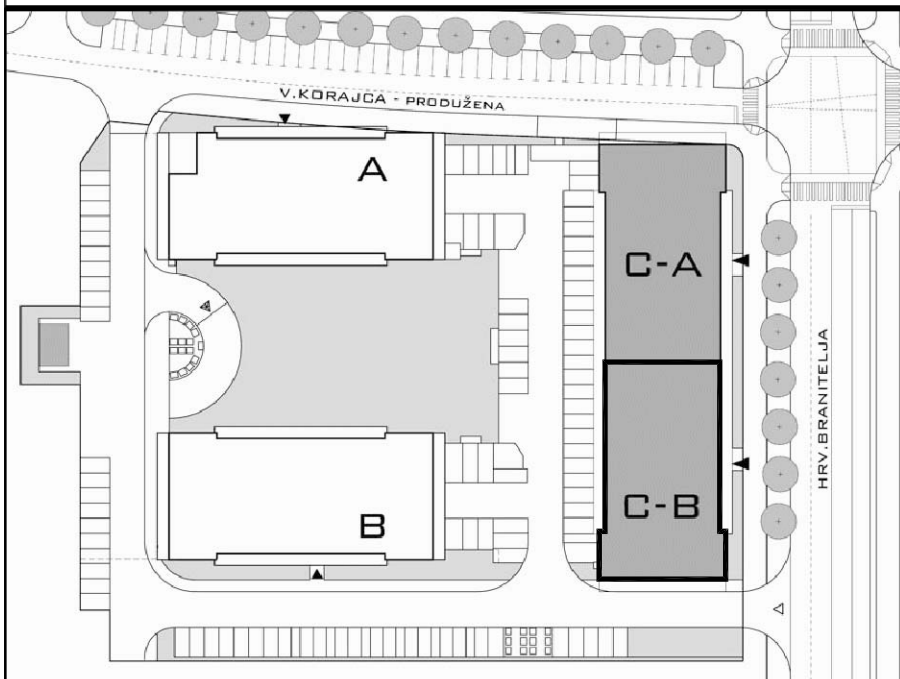
1. ULAZ	5.71 m ²
2. DNEVNI BORAVAK	20.88 m ²
3. KUPAONICA	4.37 m ²
4. KUHINJA	4.50 m ²
SVEUKUPNO	35.46 m ²
VRT	8.55 m ²



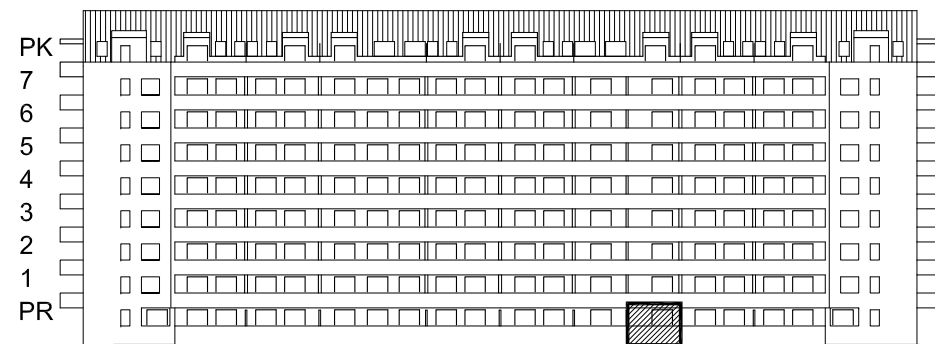
SITUACIJA



MJ 1:100

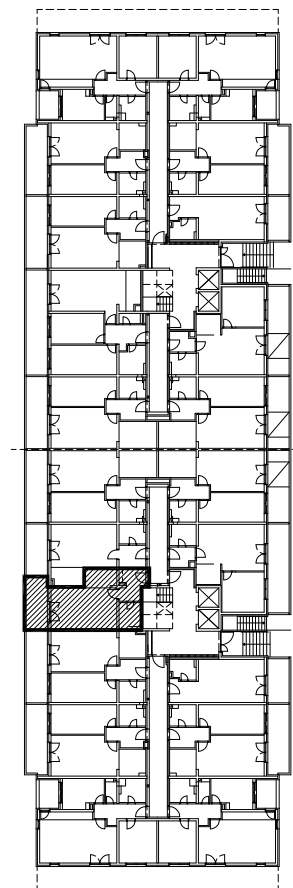


STAN B11 - jednosobni PRIZEMLJE



ZAPADNO PROČELJE

POLOŽAJ STANA NA PROČELJU



PRIZEMLJE
POLOŽAJ STANA U ZGRADI

VRT P= 8.55 m², STAN B11 P= 35.46 m²