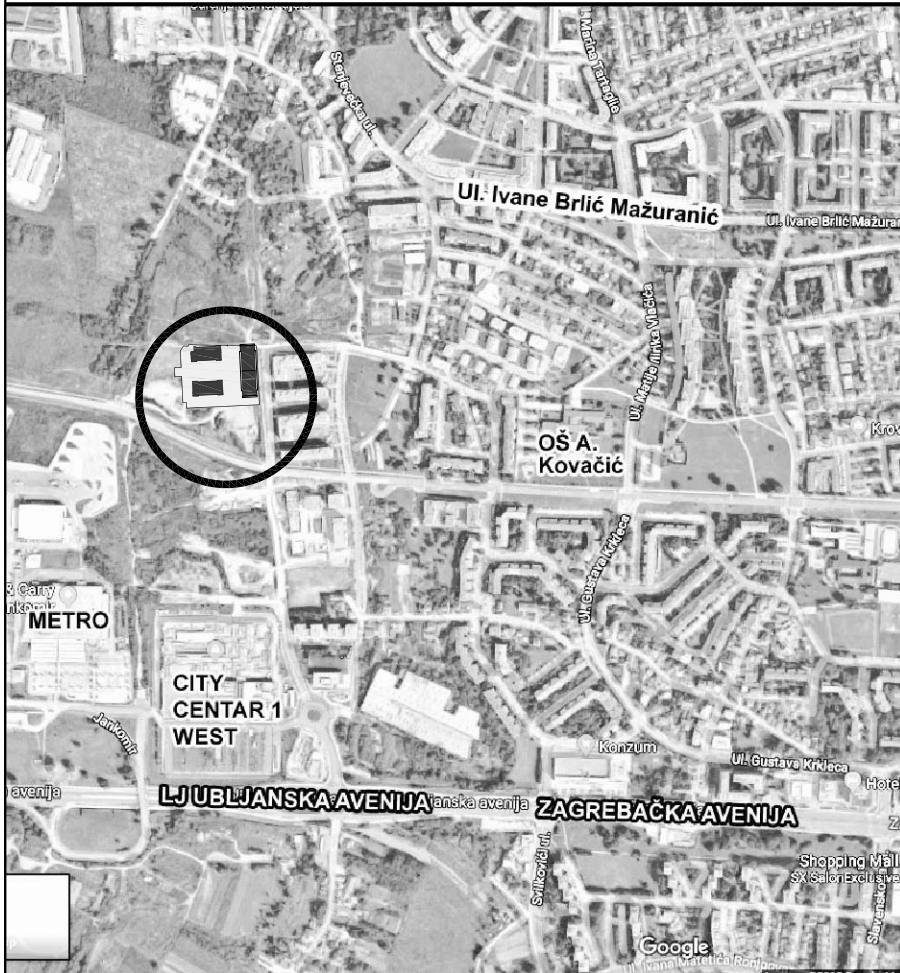
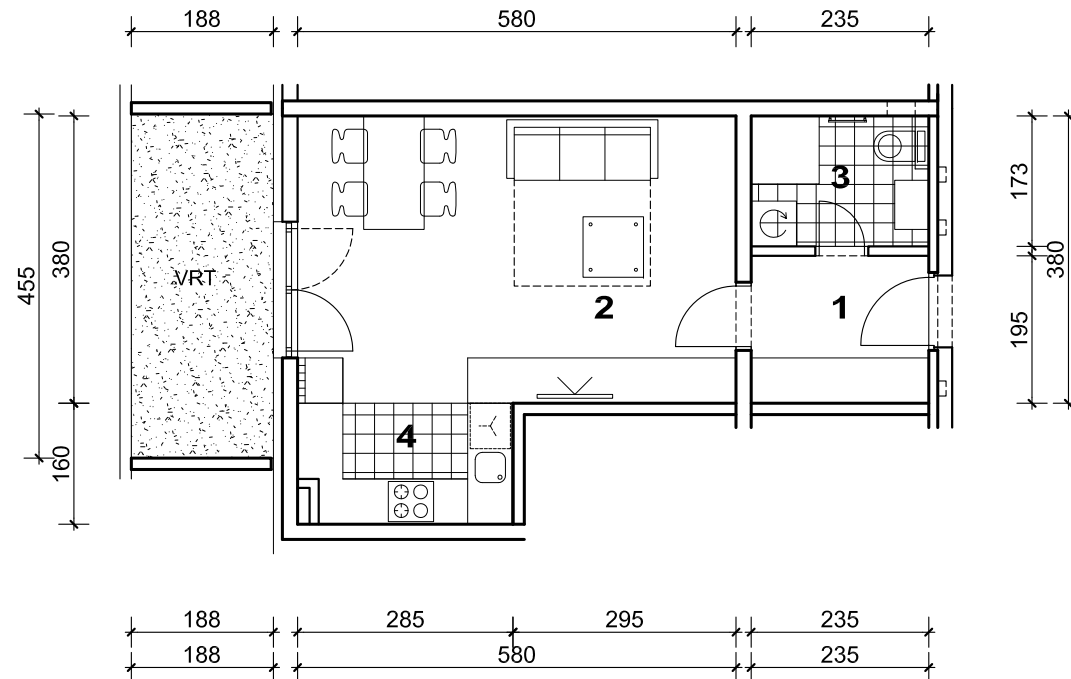


STAMBENA ZGRADA C, ŠPANSKO SJEVER, ZAGREB

STAN B10



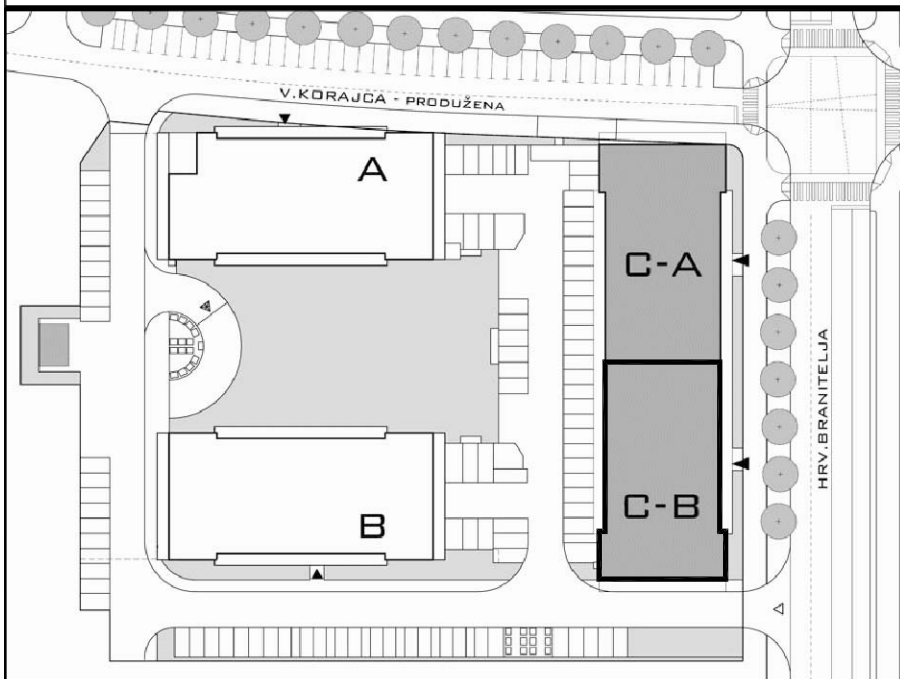
POLOŽAJ U GRADU



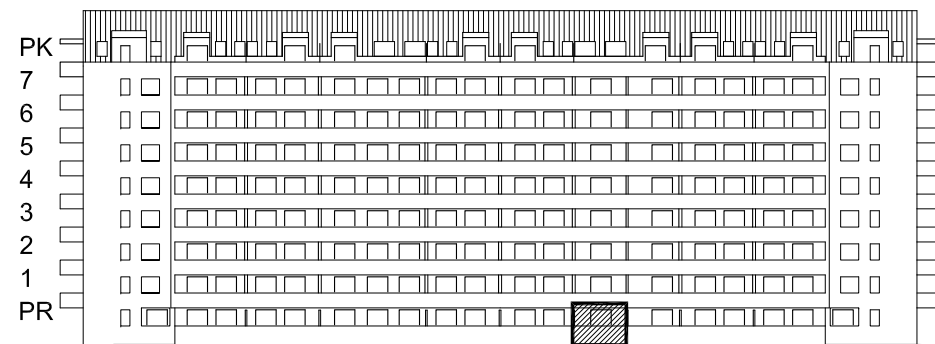
MJ 1:100



SITUACIJA



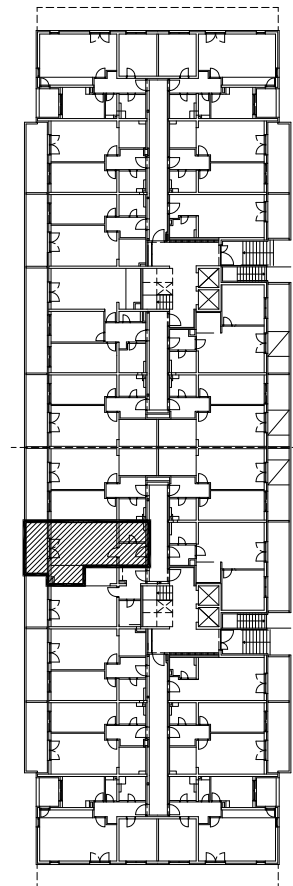
STAN B10 - jednosobni PRIZEMLJE



ZAPADNO PROČELJE

POLOŽAJ STANA NA PROČELJU

1. ULAZ	4.58 m ²
2. DNEVNI BORAVAK	22.04 m ²
3. KUPAONICA	4.05 m ²
4. KUHINJA	4.39 m ²
SVEUKUPNO	35.06 m ²
VRT	8.55 m ²



PRIZEMLJE
POLOŽAJ STANA U ZGRADI

VRT P= 8.55 m², STAN B10 P= 35.06 m²