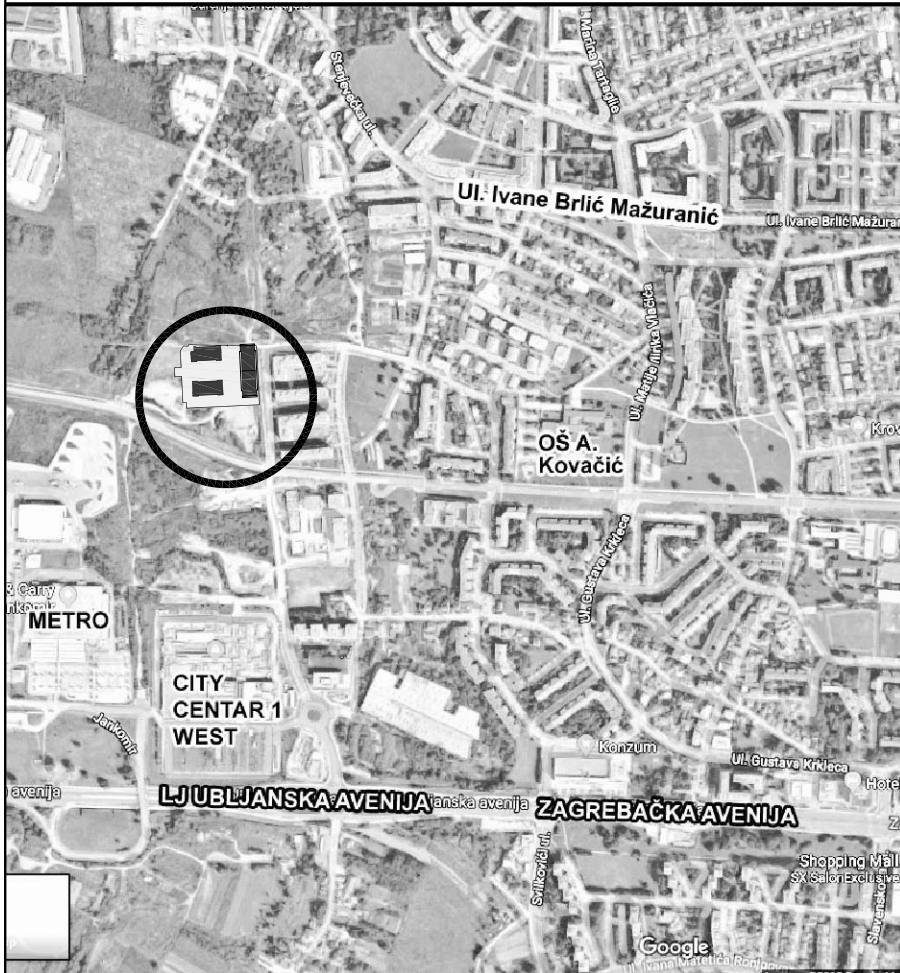
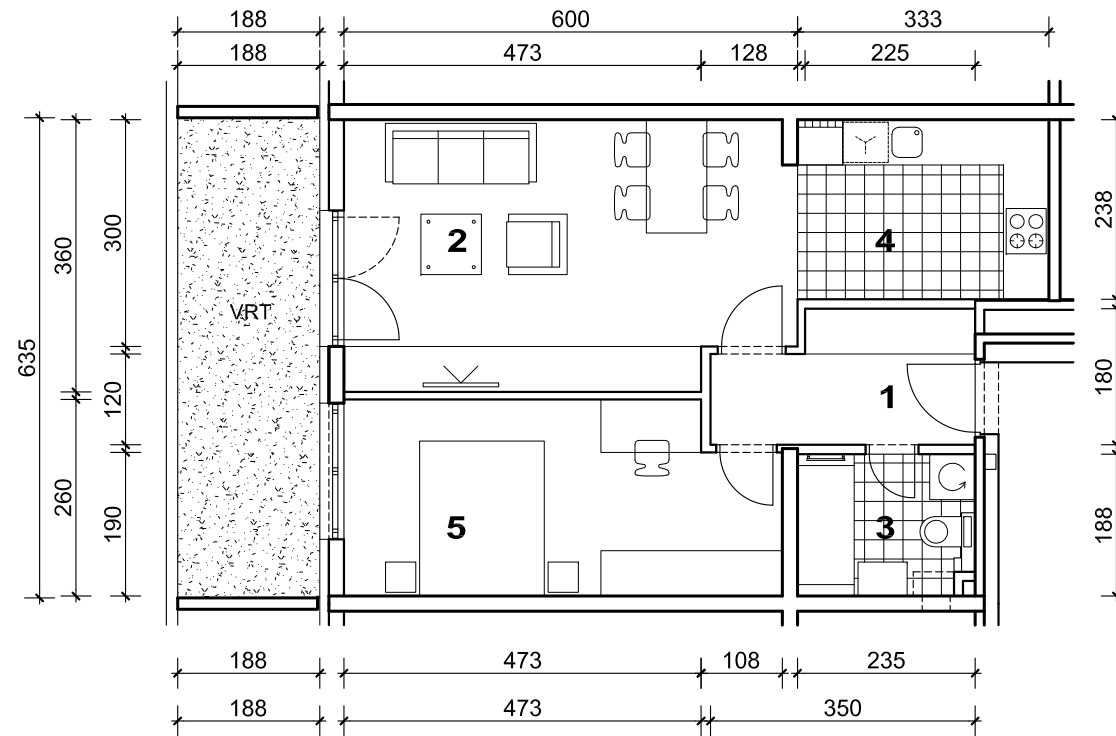


# STAMBENA ZGRADA C, ŠPANSKO SJEVER, ZAGREB

# STAN B9



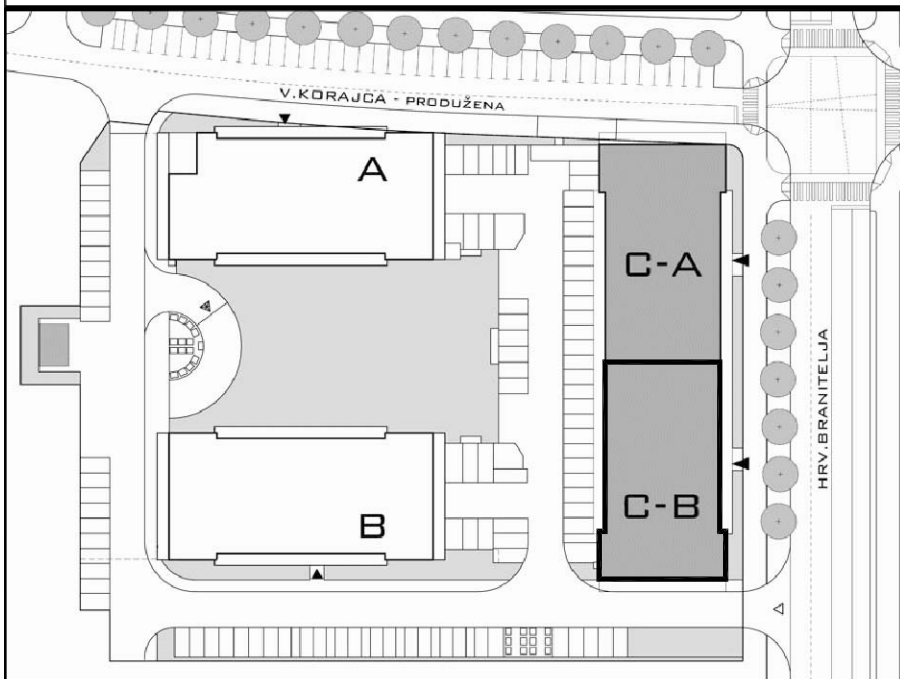
POLOŽAJ U GRADU



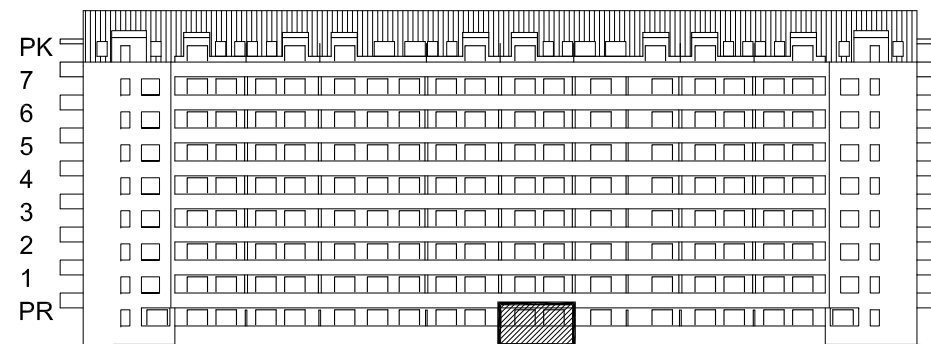
MJ 1:100



SITUACIJA



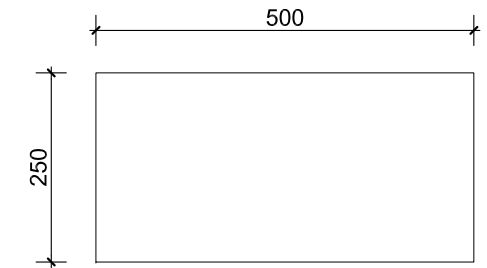
## STAN B9 - dvosobni PRIZEMLJE



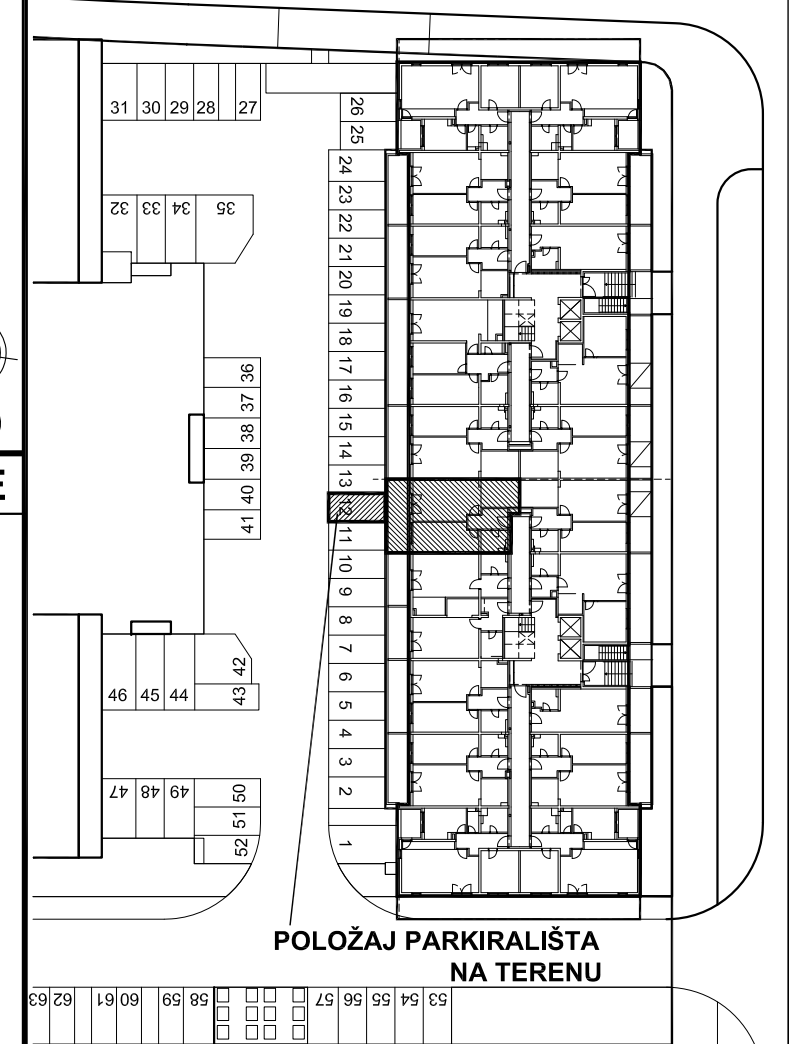
ZAPADNO PROČELJE

POLOŽAJ STANA NA PROČELJU

1. ULAZ	5.55 m <sup>2</sup>
2. DNEVNI BORAVAK	20.72 m <sup>2</sup>
3. KUPAONICA	4.32 m <sup>2</sup>
4. KUHINJA	7.92 m <sup>2</sup>
5. SOBA	14.33 m <sup>2</sup>
<b>SVEUKUPNO</b>	<b>52.84 m<sup>2</sup></b>
VRT	11.94 m <sup>2</sup>



PARKIRALIŠTE 12



POLOŽAJ PARKIRALIŠTA NA TERENU

PRIZEMLJE  
POLOŽAJ STANA U ZGRADI

**PARKIRALIŠTE 12 P= 12.50 m<sup>2</sup>, VRT P= 11.94 m<sup>2</sup>, STAN B9 P= 52.84 m<sup>2</sup>**