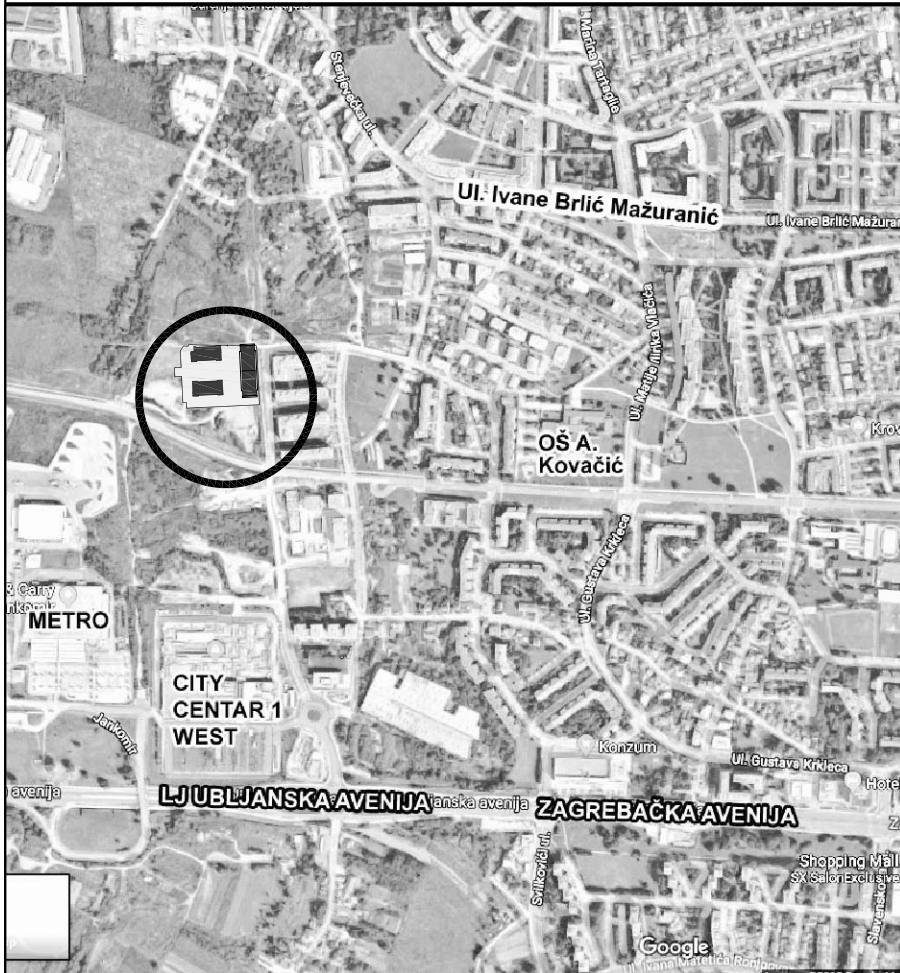
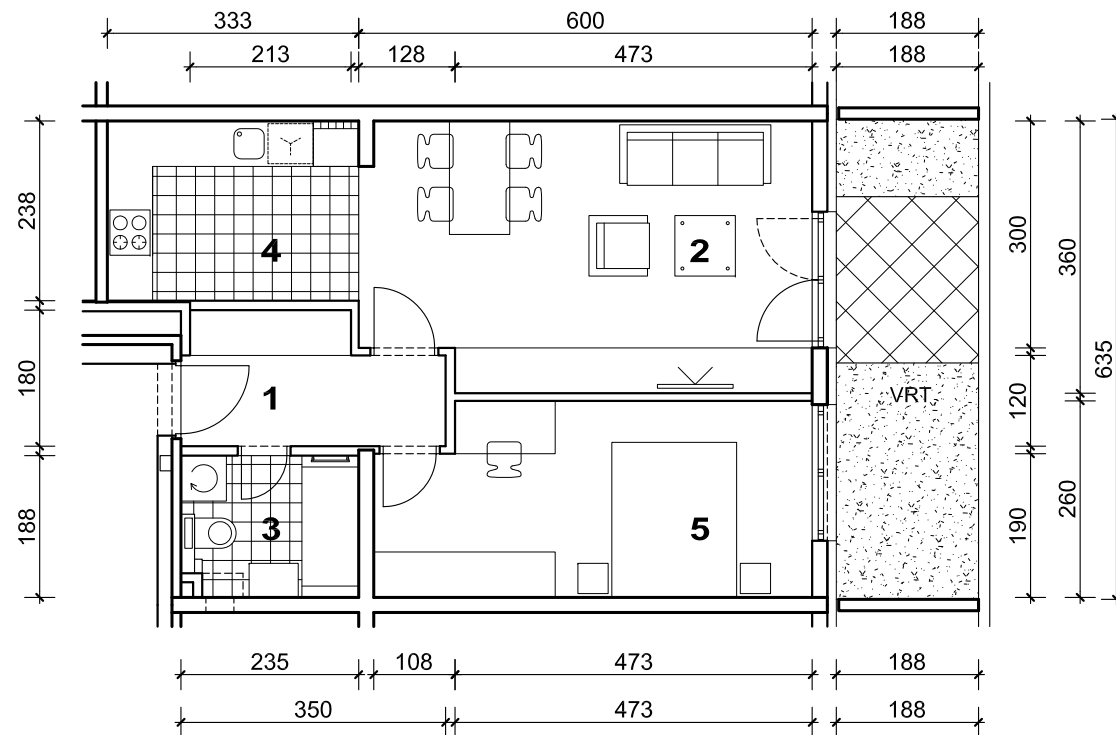


STAMBENA ZGRADA C, ŠPANSKO SJEVER, ZAGREB

STAN B8



POLOŽAJ U GRADU

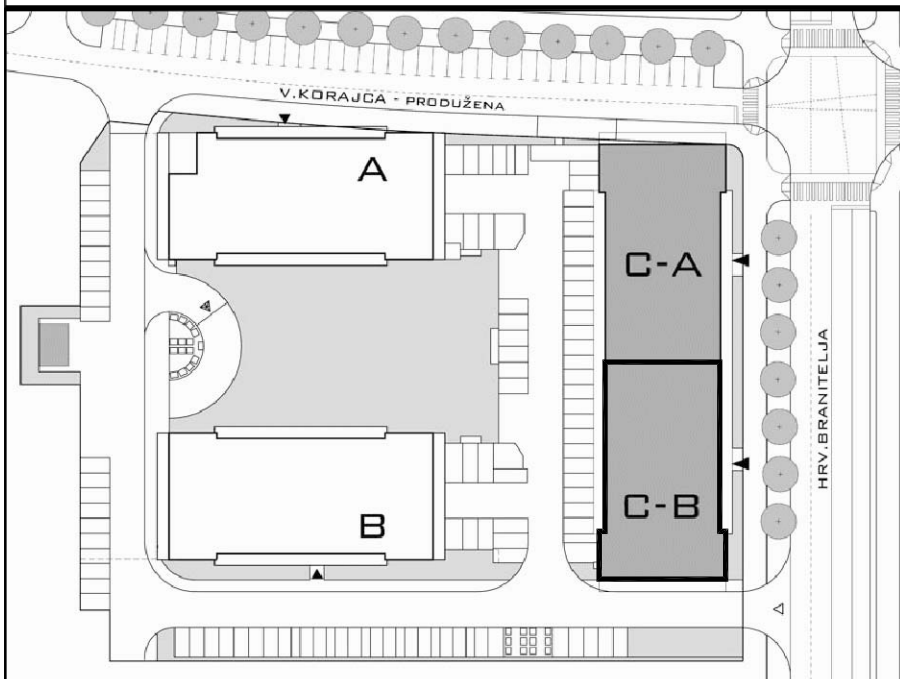


MJ 1:100

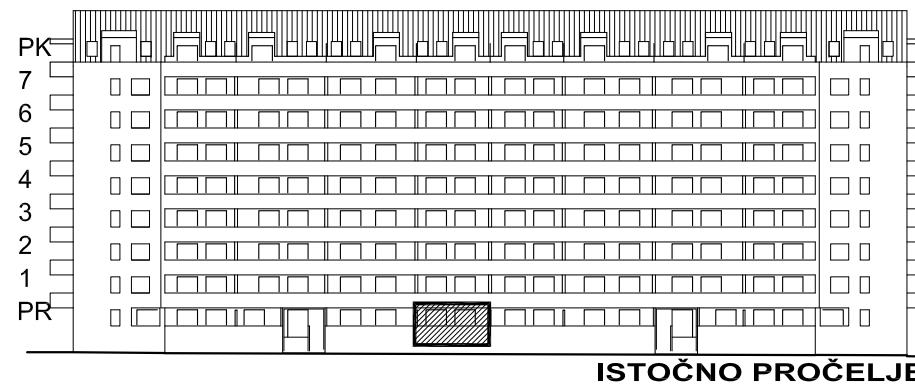
1. ULAZ	5.48 m ²
2. DNEVNI BORAVAK	20.72 m ²
3. KUPAONICA	4.32 m ²
4. KUHNJA	7.92 m ²
5. SOBA	14.33 m ²
SVEUKUPNO	52.77 m²
VRT	11.94 m ²



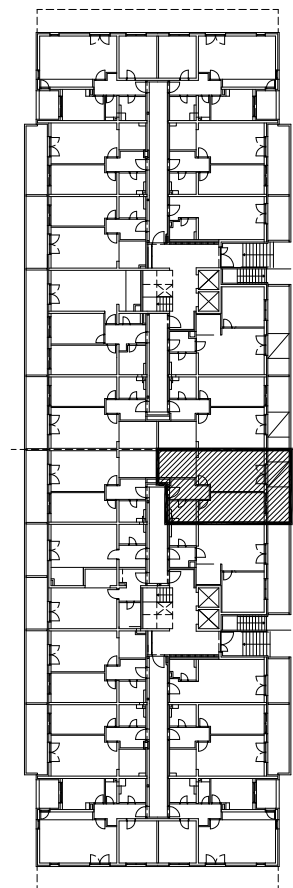
SITUACIJA



STAN B8 - dvosobni PRIZEMLJE



POLOŽAJ STANA NA PROČELJU



PRIZEMLJE
POLOŽAJ STANA U ZGRADI

VRT P= 11.94 m², STAN B8 P= 52.77 m²