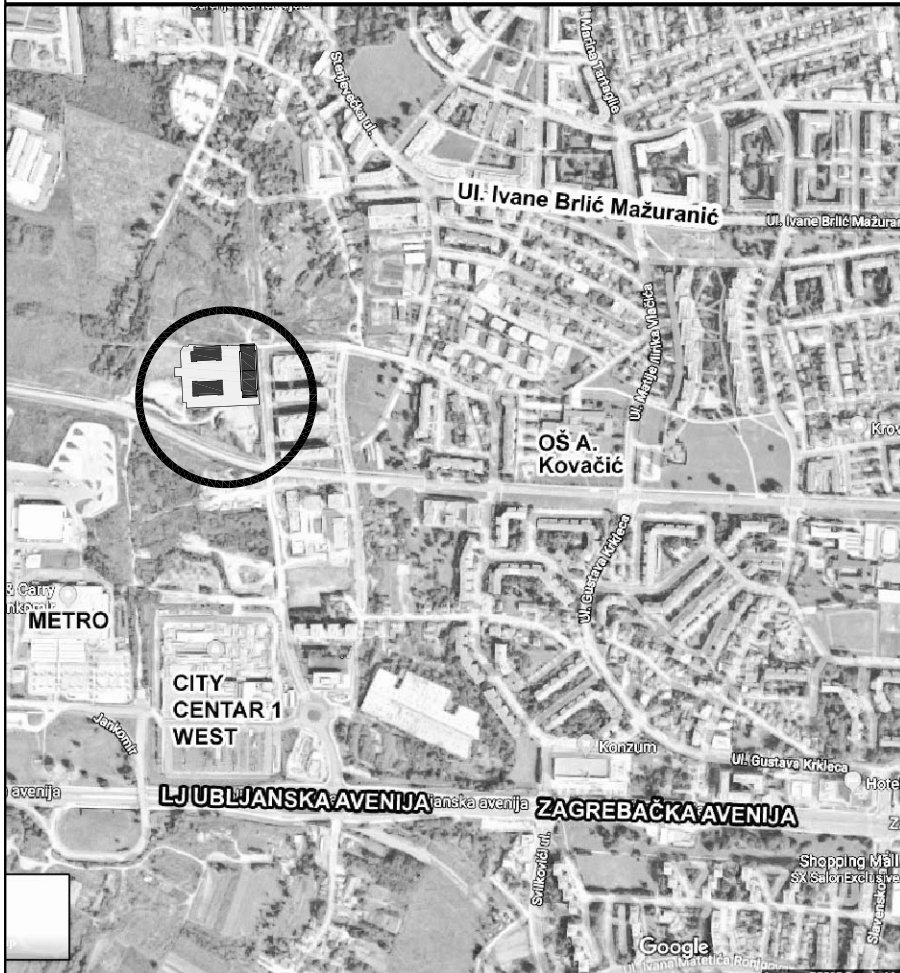
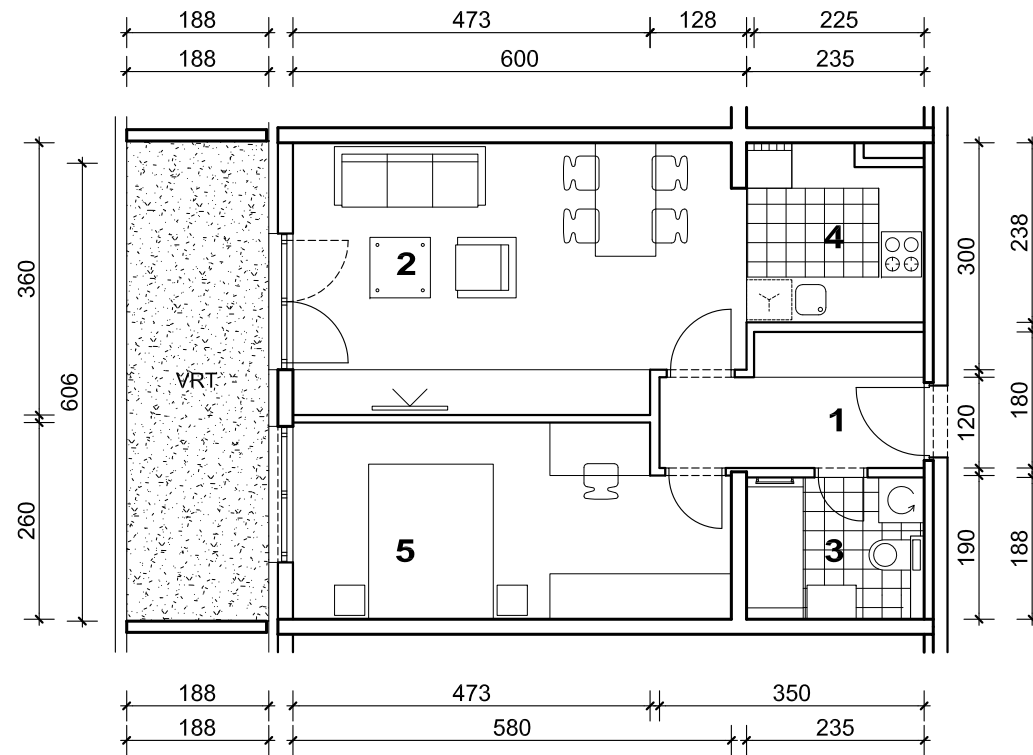


STAMBENA ZGRADA C, ŠPANSKO SJEVER, ZAGREB

STAN B6



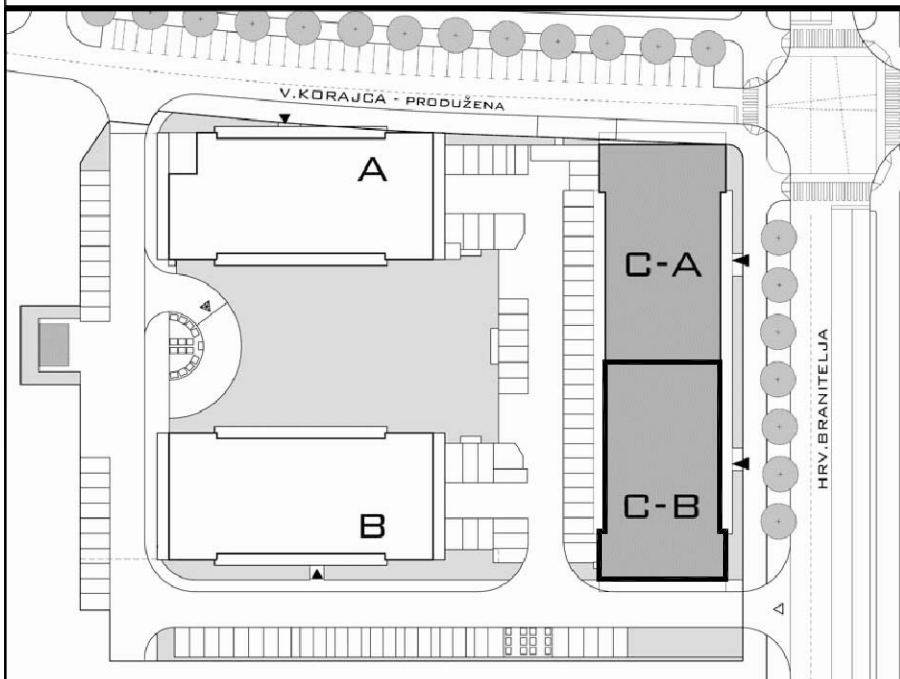
POLOŽAJ U GRADU



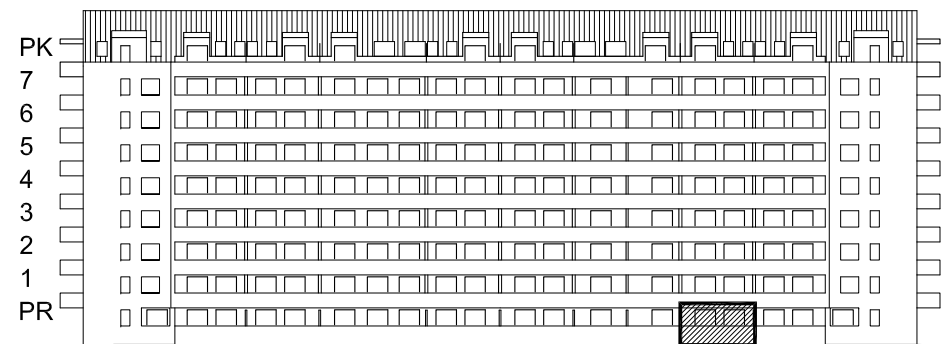
MJ 1:100



SITUACIJA



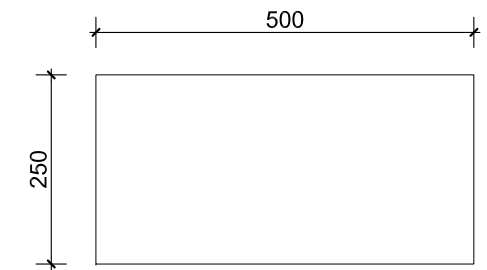
STAN B6 - dvosobni PRIZEMLJE



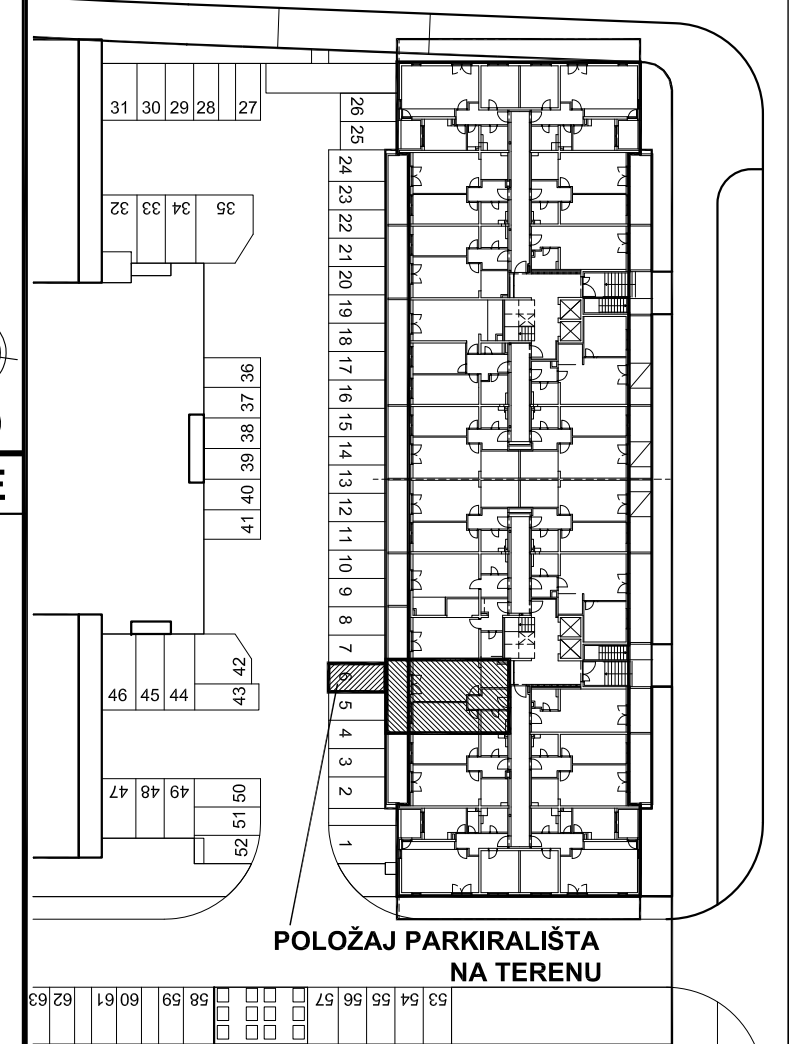
ZAPADNO PROČELJE

POLOŽAJ STANA NA PROČELJU

1. ULAZ	5.55 m ²
2. DNEVNI BORAVAK	20.72 m ²
3. KUPAONICA	4.32 m ²
4. KUHINJA	5.29 m ²
5. SOBA	14.33 m ²
SVEUKUPNO	50.21 m²
VRT	11.94 m ²



PARKIRALIŠTE 6



POLOŽAJ PARKIRALIŠTA NA TERENU

PRIZEMLJE
POLOŽAJ STANA U ZGRADI

PARKIRALIŠTE 6 P= 12.50 m², VRT P= 11.94 m², STAN B6 P= 50.21 m²