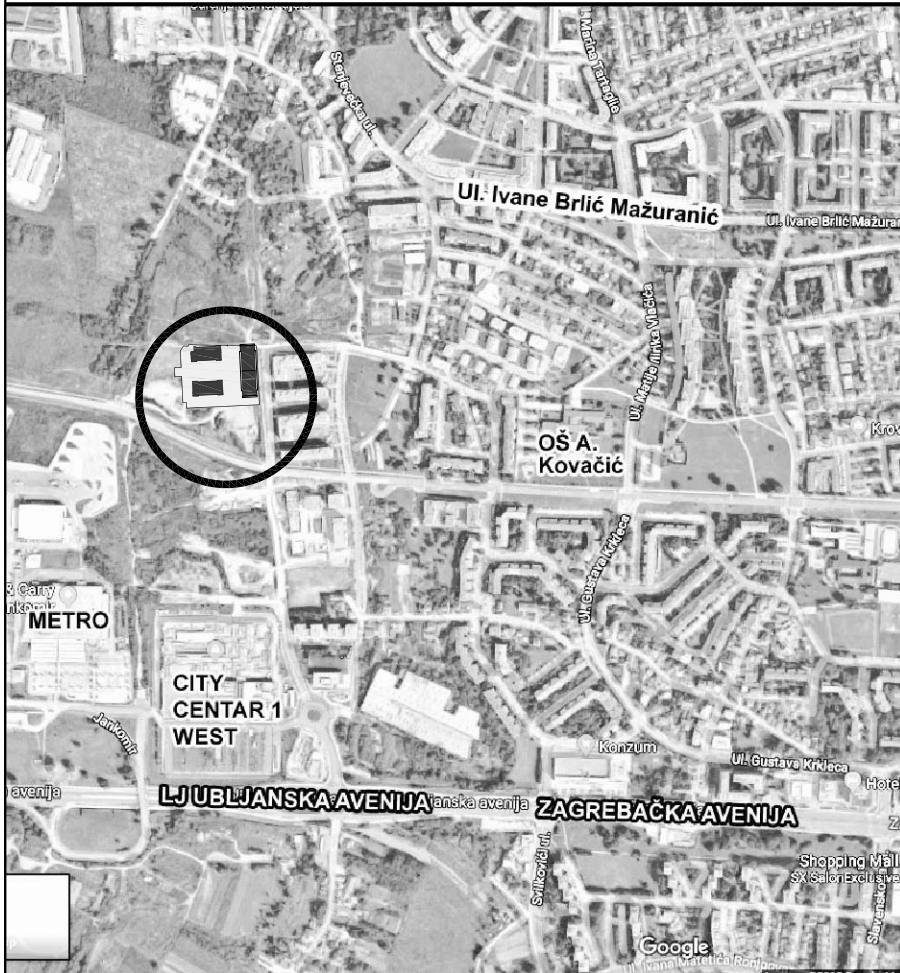
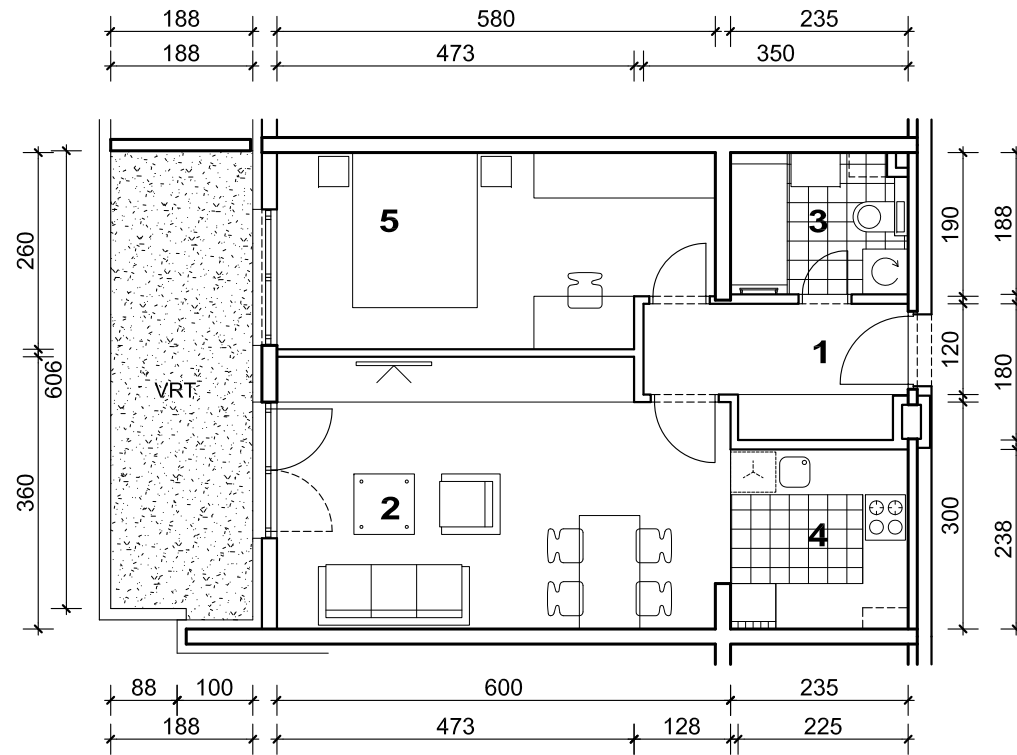


STAMBENA ZGRADA C, ŠPANSKO SJEVER, ZAGREB

STAN B5



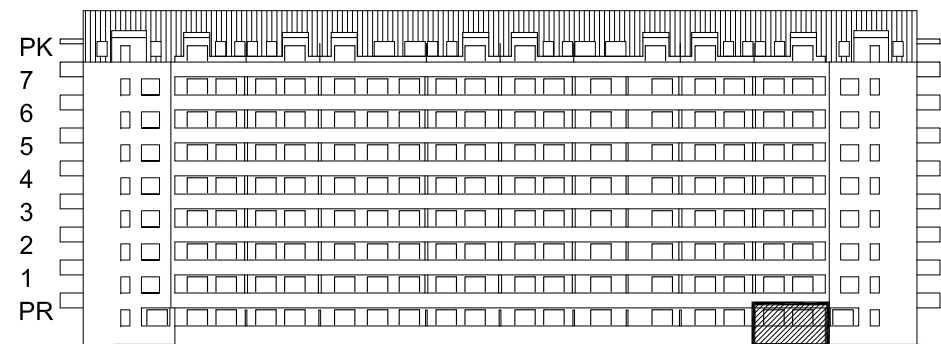
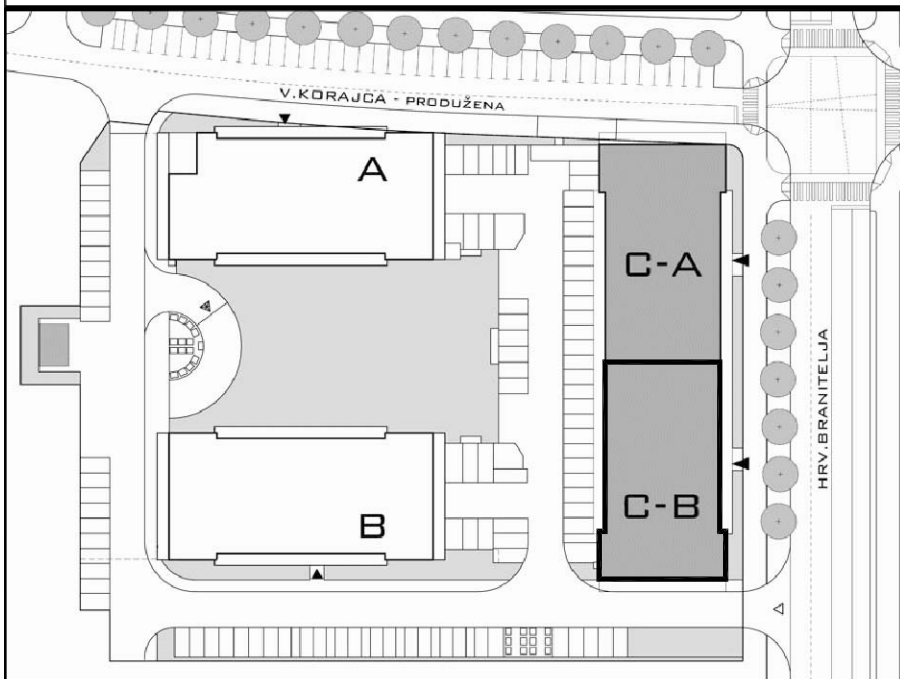
POLOŽAJ U GRADU



MJ 1:100

SITUACIJA

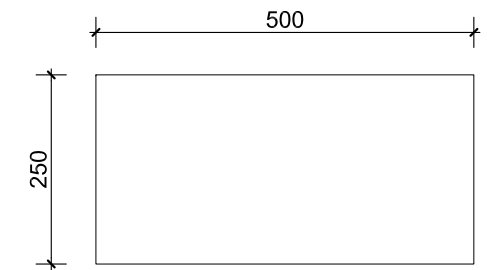
STAN B5 - dvosobni PRIZEMLJE



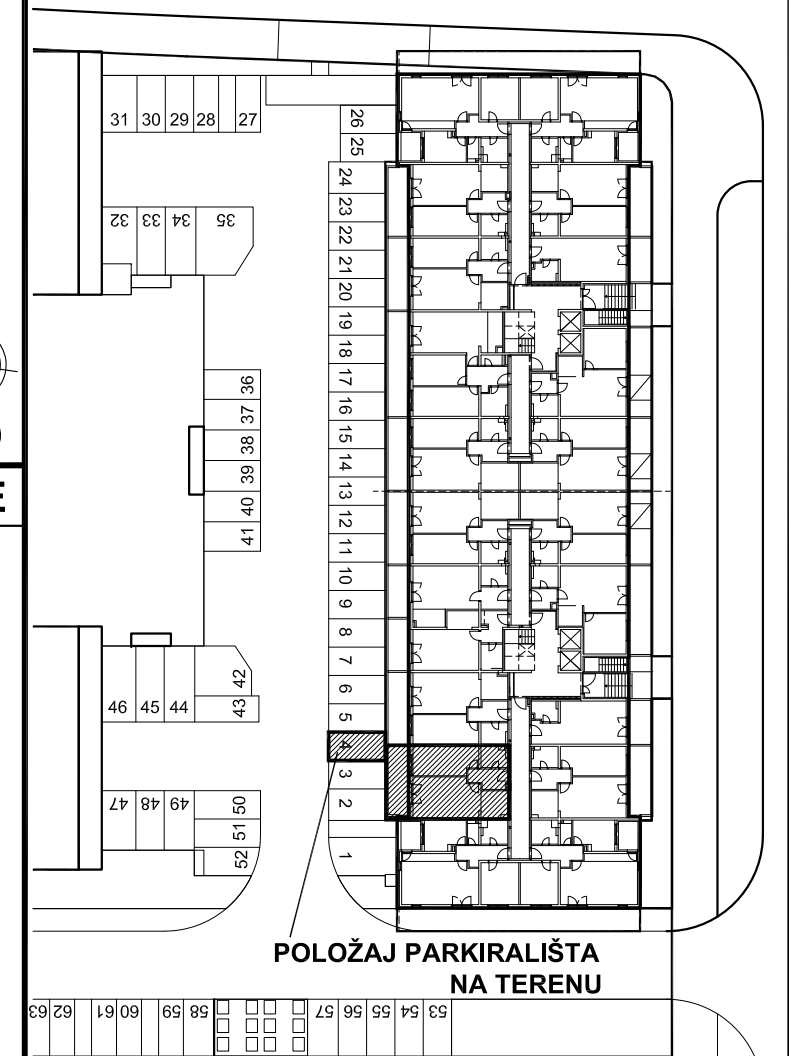
ZAPADNO PROČELJE

POLOŽAJ STANA NA PROČELJU

1. ULAZ	5.43 m ²
2. DNEVNI BORAVAK	20.72 m ²
3. KUPAONICA	4.32 m ²
4. KUHINJA	5.58 m ²
5. SOBA	14.33 m ²
SVEUKUPNO	50.38 m²
VRT	11.52 m ²



PARKIRALIŠTE 4



POLOŽAJ PARKIRALIŠTA NA TERENU

PRIZEMLJE
POLOŽAJ STANA U ZGRADI

PARKIRALIŠTE 4 P= 12.50 m², VRT P= 11.52 m², STAN B5 P= 50.38 m²