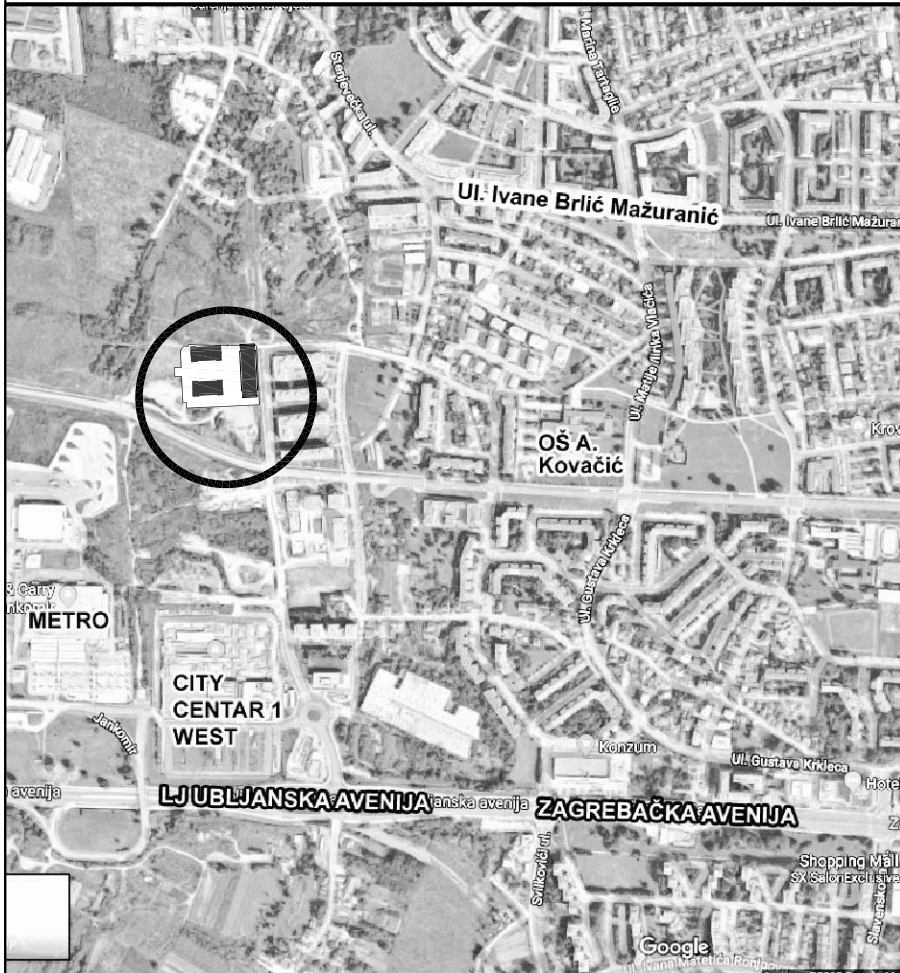
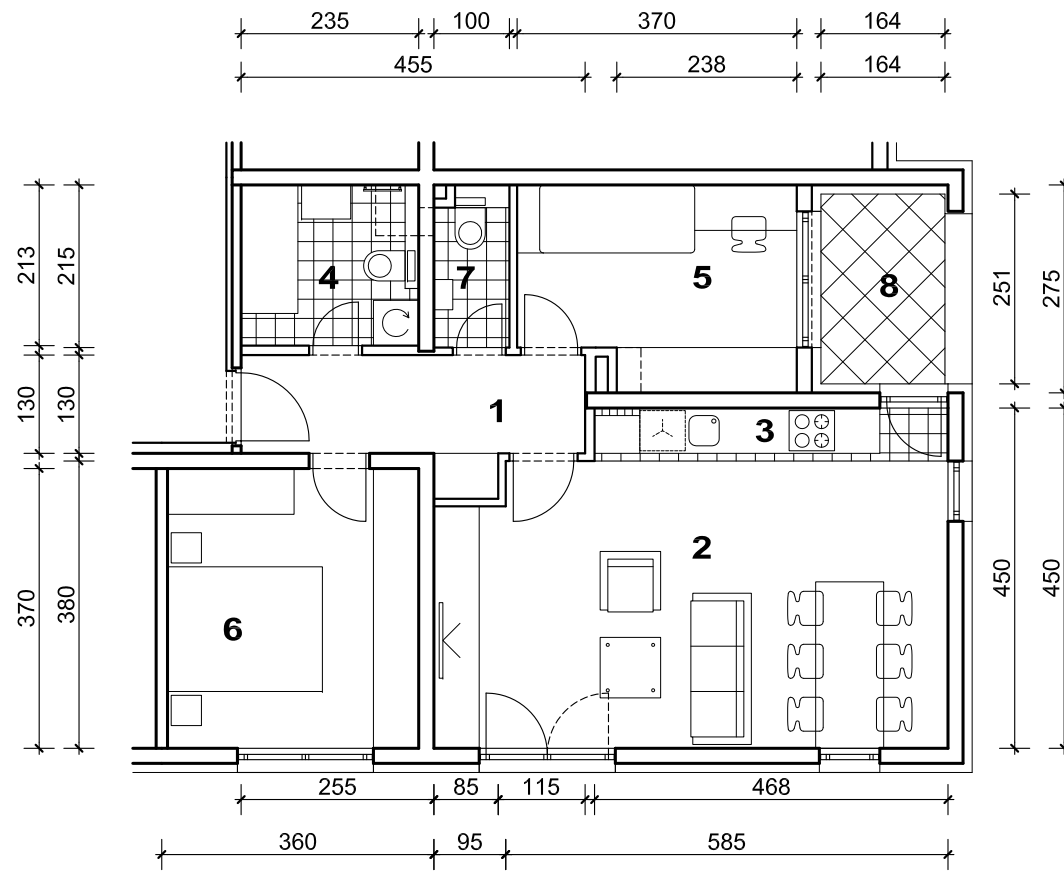


STAMBENA ZGRADA C, ŠPANSKO SJEVER, ZAGREB

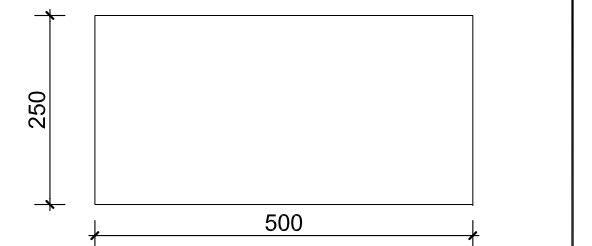
STAN B3



POLOŽAJ U GRADU



1. ULAZ	6.43 m ²
2. DNEVNI BORAVAK	25.27 m ²
3. KUHINJA	3.29 m ²
4. KUPAONICA	4.99 m ²
5. SOBA	9.38 m ²
6. SOBA	12.30 m ²
7. WC	2.07 m ²
8. LOGGIA 0.75 x 4.12	3.09 m ²
SVEUKUPNO	66.82 m²



PARKIRALIŠTE 53

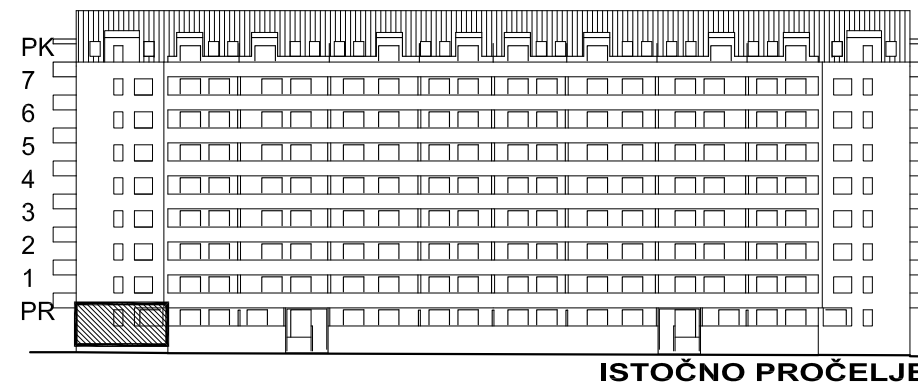
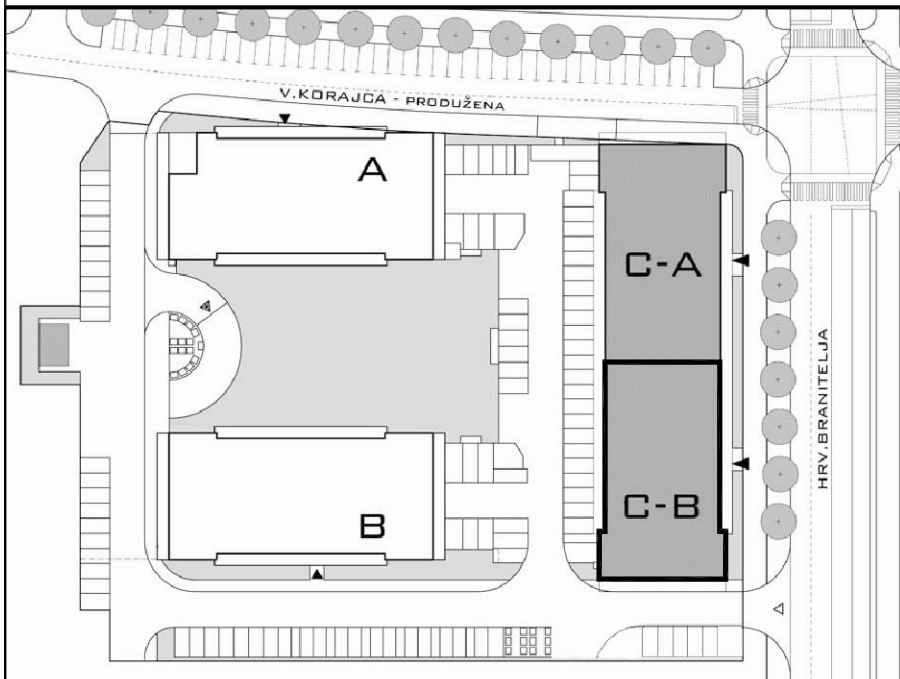


SITUACIJA



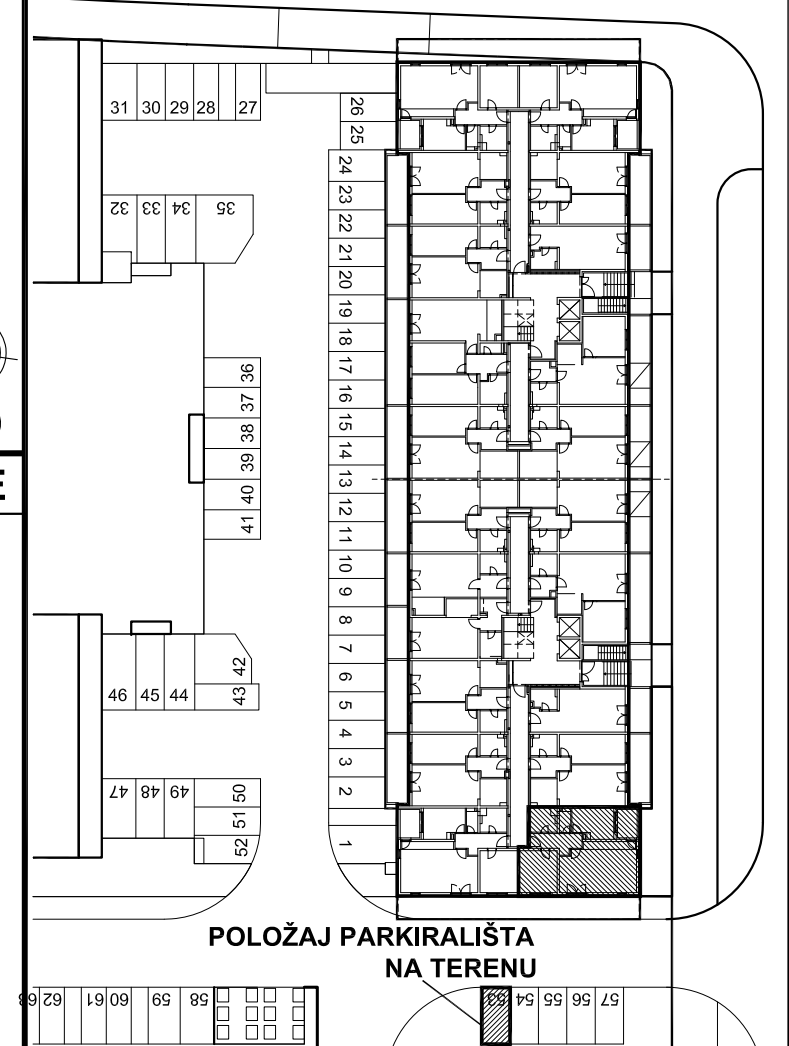
MJ 1:100

STAN B3 - trosobni PRIZEMLJE



ISTOČNO PROČELJE

POLOŽAJ STANA NA PROČELJU



POLOŽAJ PARKIRALIŠTA NA TERENU

PRIZEMLJE
POLOŽAJ STANA U ZGRADI

PARKIRALIŠTE 53 P= 12.50 m², STAN B3 P= 66.82 m²