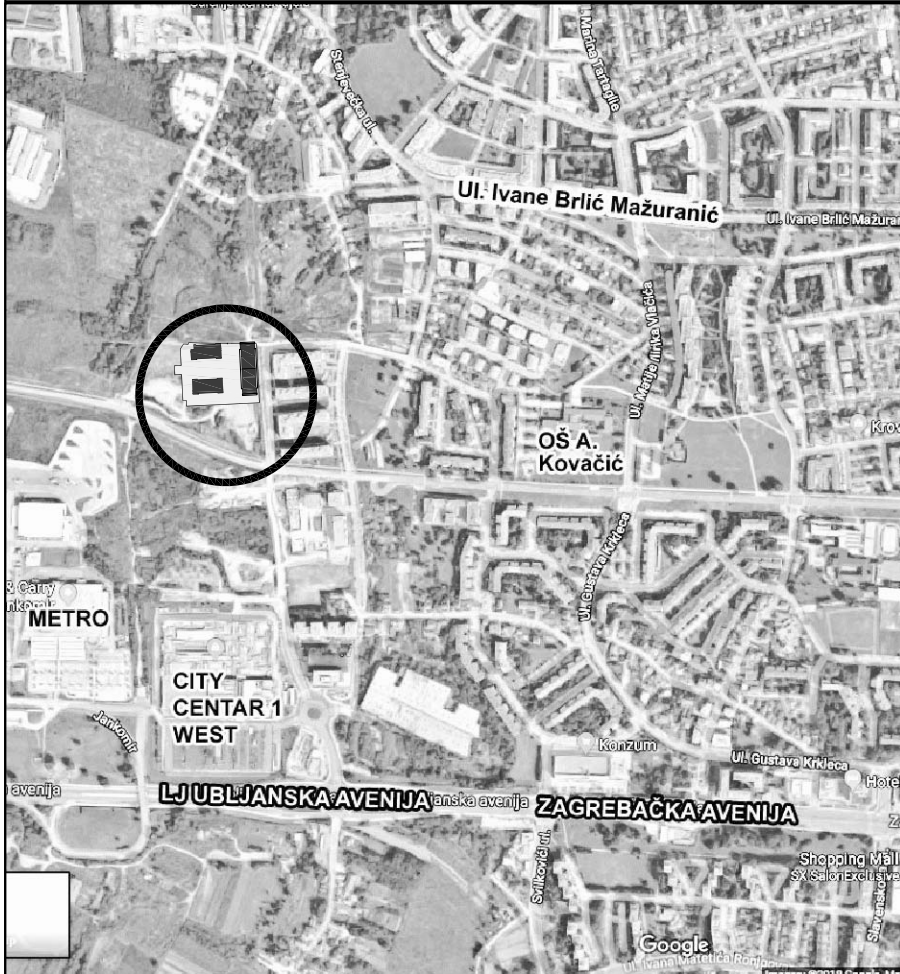
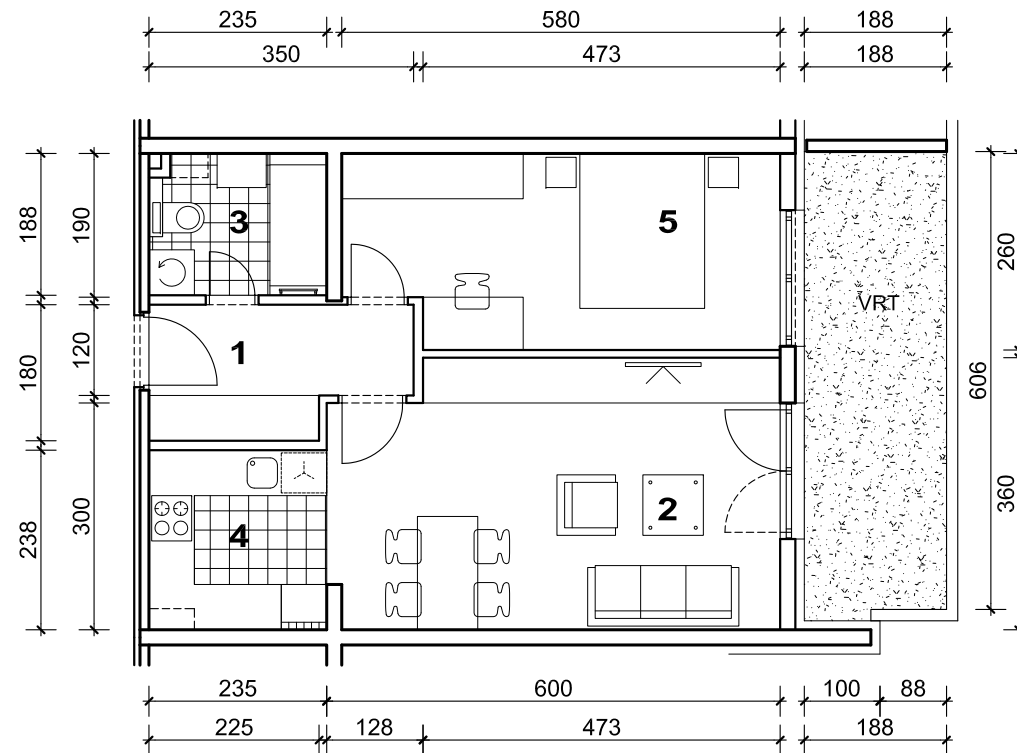


STAMBENA ZGRADA C, ŠPANSKO SJEVER, ZAGREB

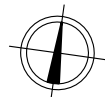
STAN B2



POLOŽAJ U GRADU



1. ULAZ	5.55 m ²
2. DNEVNI BORAVAK	20.72 m ²
3. KUPAONICA	4.32 m ²
4. KUHNJA	5.58 m ²
5. SOBA	14.33 m ²
SVEUKUPNO	50.50 m²
VRT	11.52 m ²

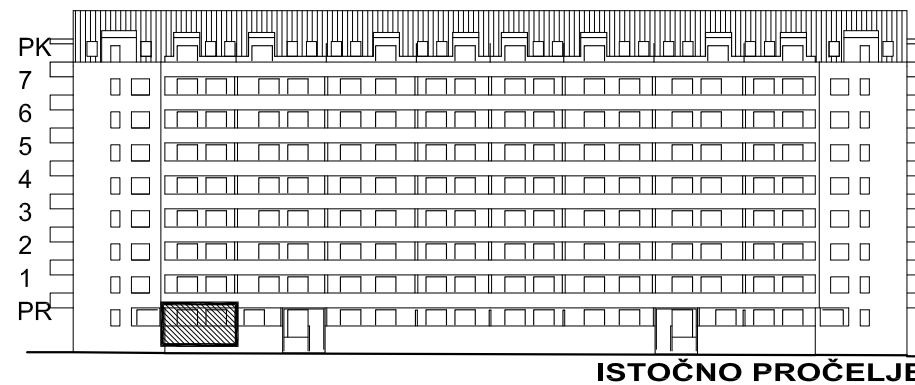
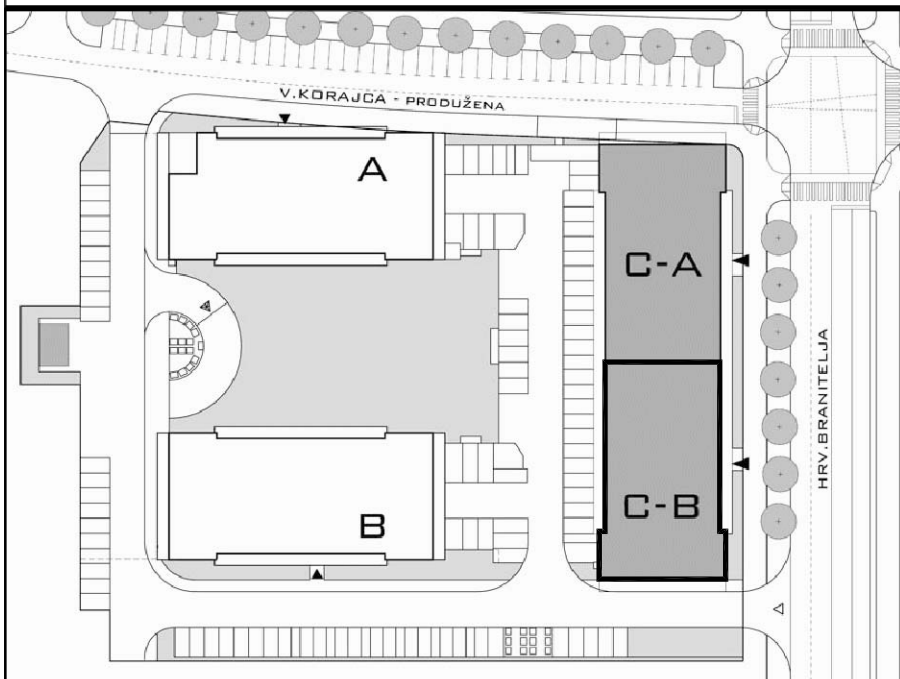


SITUACIJA



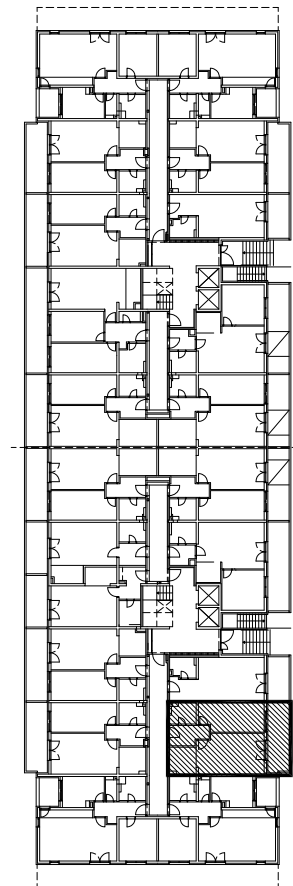
MJ 1:100

STAN B2 - dvosobni PRIZEMLJE



ISTOČNO PROČELJE

POLOŽAJ STANA NA PROČELJU



PRIZEMLJE
POLOŽAJ STANA U ZGRADI

VRT P= 11.52 m², STAN B2 P= 50.50 m²